

InfoBrief ENROLLMENT

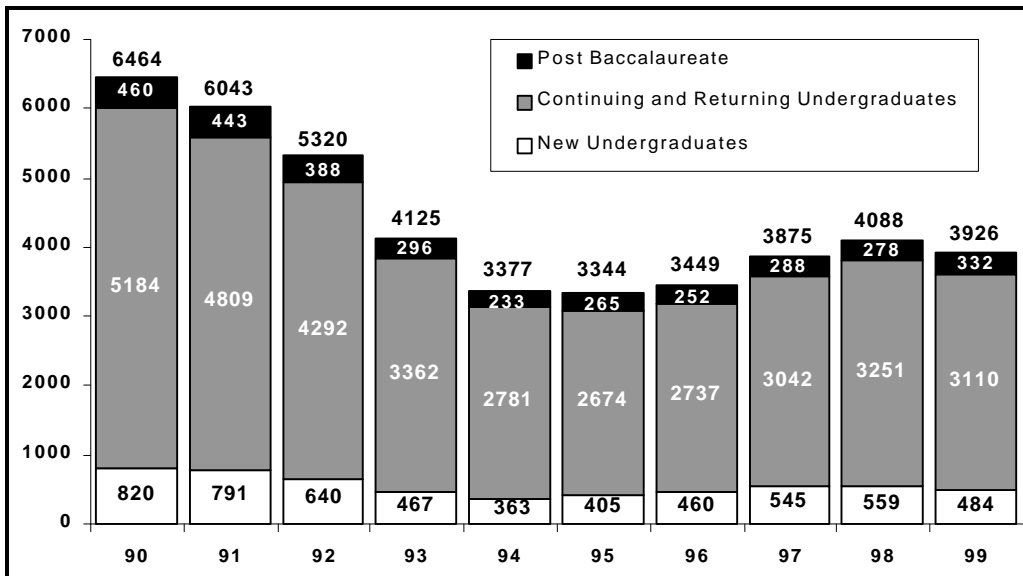
Cal Poly, San Luis Obispo

Institutional Planning and Analysis

Census Data ■ Summer 1999

August 6, 1999

SUMMER HEADCOUNT ENROLLMENT — University Total



OVERVIEW

The total headcount enrollment for Summer 1999 was 3,926 students. This is about 10 percent below the target set in February 1999.

Full-time equivalent students (FTES) was also about 10 percent below target at 2,414. Both headcount and FTES were slightly below Summer 1998 (when headcount was 4,088 and FTES was 2,502). However, student course loads exceeded target and were the highest since the budget reductions of the early 1990s.

New, Continuing and Returning Students

Summer 1999 census enrollment numbers indicate 192 new first-time freshmen and 292 new transfer undergraduate students. There were also 3,110 returning and

continuing undergraduate students enrolled in courses. At the post baccalaureate level, there were 42 new students and 290 continuing students.

College and University Total Headcount Enrollment (Official Census — 8/6/99)

College	Undergraduate	Post Baccalaureate	Headcount Total	% Change from Summer 1998
Agriculture	687	20	707	-1.3%
Arch & Environmental Design	231	7	238	-7.4%
Business	695	38	733	9.2%
Engineering	760	39	799	-13.7%
Liberal Arts	712	33	745	-11.0%
Science & Mathematics	480	18	498	-2.5%
UCTE	0	168	168	28.2%
Other	29	9	38	-2.6%
University Total	3,594	332	3,926	-4.0%

FULL-TIME EQUIVALENT STUDENTS, AVERAGE UNITS AND FULL-TIME STATUS

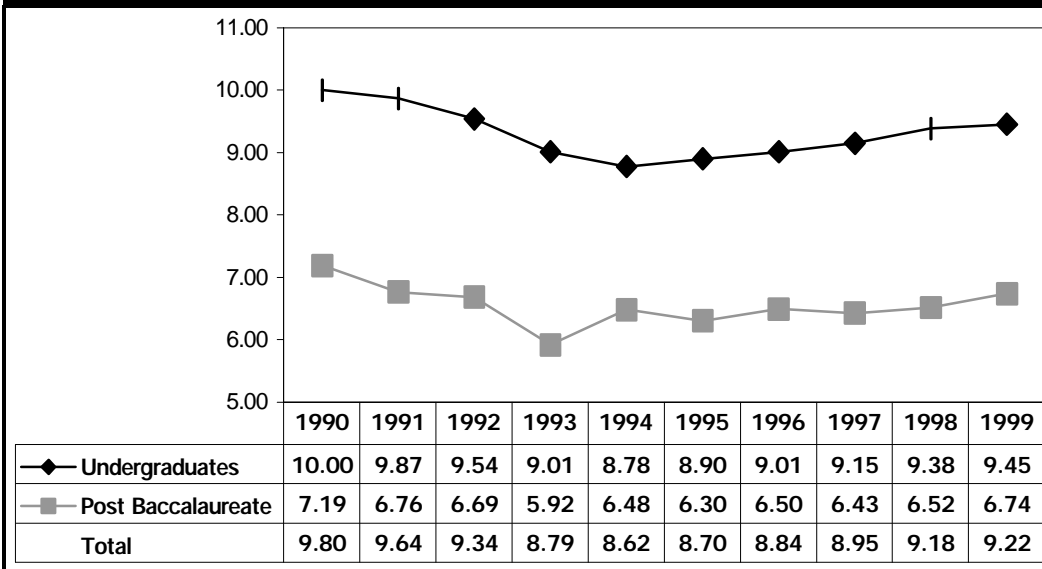
More total students enrolled full-time in Summer 1999 than they did in Summer 1998.

35.6% of undergraduates enrolled in at least 12 units Summer 1999, compared to 34.7% in Summer 1998. In Summer 1999, 22% of post baccalaureate students enrolled in 9 or more units, compared to only 20.1% in Summer 1998.

Summer 1999 continued the trend of an increase in average units per student that has been underway since 1994. Undergraduate students in the College of Business attempted the highest average unit load

at 9.83, followed by the College of Engineering (9.81); the College of Science and Mathematics (9.53); the College of

Average Undergraduate and Post Baccalaureate Units



Liberal Arts (9.47); the College of Architecture and Environmental Design (9.32); and the College of Agriculture (8.78).

UNIVERSITY STUDENT DIVERSITY

Of the total enrolled students at Cal Poly in Summer 1999, 48.7% are female and 51.3% are male. Among the Colleges, the female/male ratio varies with more females than males in the University Center for Teacher Education (76% female); the College of Liberal Arts (72% female); the College of Agriculture (56% female); and the College of Science and Mathematics (55% female). Males outnumber females in the Colleges of Engineering (82% male); Architecture and Environmental Design (63% male); and Business (58% male).

Cal Poly Summer 1999 enrollment by ethnic origin shows little change from Spring 1999. Approximately 60% of the undergraduates are white, 32% are non-white and less than 1% are international students. 7% of enrolled undergraduates chose not to respond to the ethnic origin query (information on student ethnic origin is self-reported). Among post baccalaureate students enrolled for Summer 1999, 61% are white, 30% are non-white, 1% are international students and 8% did not respond.

FTES - SUMMER AND COLLEGE YEAR

Summer enrollment and admissions are determined independently from Fall admissions and enrollment, therefore the expectations for Fall enrollment have not been adjusted at this point. However, it should be noted that the shortfall for Summer means that College Year FTES (Full-time Equivalent Student) is expected to be lower by the same amount.

CLASS SCHEDULE UPDATE

The university offered 24 more sections (not including Independent Study) than were offered last summer. As in previous summer quarters, the university offered two 5 week sessions along with the normal 10 week session. Of the 500 total sections offered, 49 were offered during the first 5 week session, and 9 were offered in the second 5 week session.

TOTAL APPLICANTS, SELECTED AND ENROLLED (Official Census — 8/6/99)

Summer Term	1994	1995	1996	1997	1998	1999
Applications	1625	1273	1509	1950	1840	1826
Selected	653	707	763	909	784	823
Enrolled	370	429	477	596	599	526
% Selected from Applications	40.2%	55.5%	50.6%	46.6%	42.6%	45.1%
% Enrolled from Selected	56.7%	60.7%	62.5%	65.6%	76.4%	63.9%