

# InfoBrief ENROLLMENT

Cal Poly, San Luis Obispo

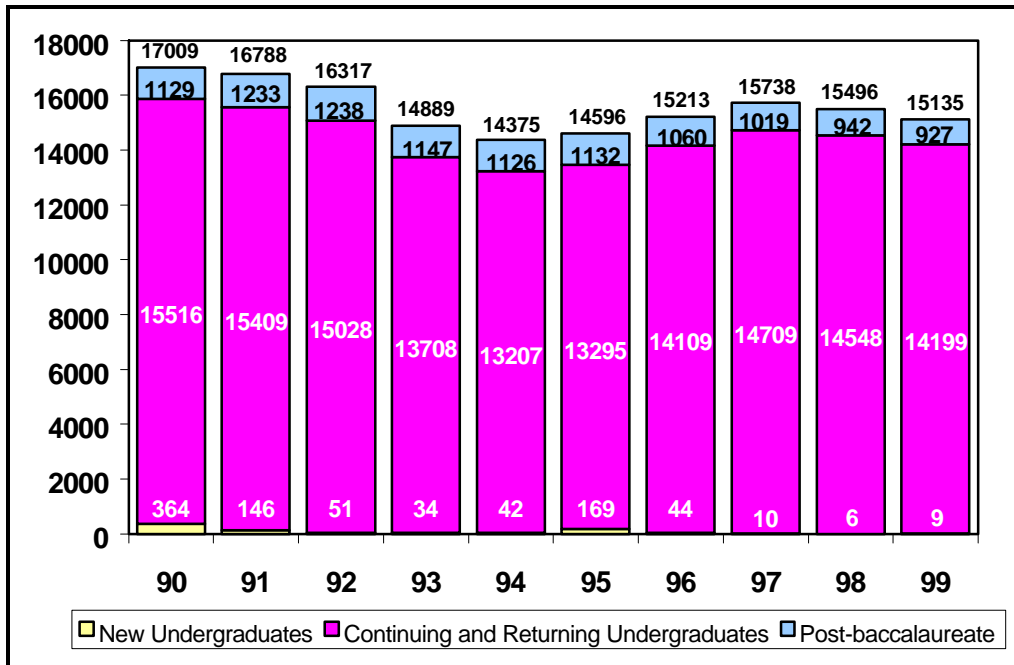
Institutional Planning and Analysis

Census Data ■ Spring 1999

May 6, 1999

## SPRING HEADCOUNT ENROLLMENT — UNIVERSITY TOTAL

## OVERVIEW



The total headcount enrollment for Spring 1999 was 15,135 students. This number is about 2 percent below target.

Spring headcount and full-time equivalent student enrollments (FTES) are typically lower than Fall and Winter enrollments at Cal Poly. This academic year both Fall and Winter enrollments fell below target. Therefore, it was not unexpected that Spring enrollments were also below target. For the entire college year FTES was about 1.4% below the campus target, and 0.9% below the enrollment level budgeted by the Califor-

## HEADCOUNT ENROLLMENT BY COLLEGE

All colleges experienced a decrease in headcount from Winter to Spring 1999: the University Center for Teacher Education (7.9%); the College of Engineering (5.6%); the College of Science and Mathematics (4.2%); the College

of Agriculture (4%); the College of Liberal Arts (3.8%); the College of Architecture and Design (3.2%); and the College of Business (1.9%).

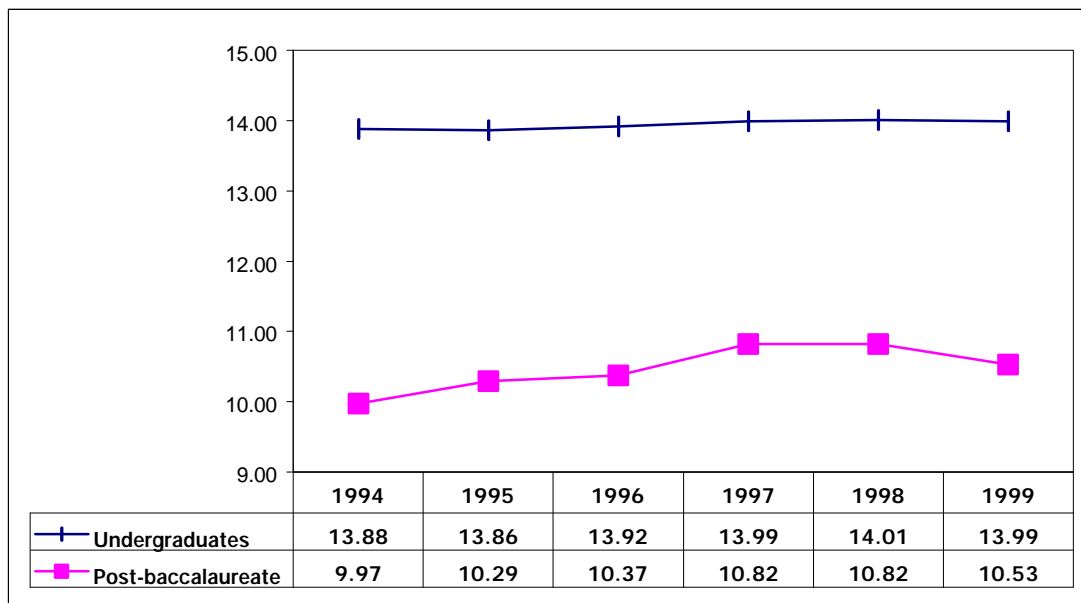
## College and University Total Headcount Enrollment (Official Census — 5/6/99)

College	Undergraduate	Post-baccalaureate	Headcount Total
Agriculture	3,095	93	3,188
Arch & Environmental Design	1,327	56	1,383
Business	2,179	102	2,281
Engineering	3,540	122	3,662
Liberal Arts	2,425	95	2,520
Science & Mathematics	1,544	88	1,632
UCTE	0	339	339
Other	98	32	130
<b>University Total</b>	<b>14,208</b>	<b>927</b>	<b>15,135</b>

**Full-time Equivalent Students, Average Units and Full-time Status**

Full-Time Equivalent Students (FTES) is a theoretical normal courseload equal to 15 units per student per term. It assumes that a student will complete a 186 quarter unit baccalaureate program in 12 quarters or 4 years at 15 units per term.

Cal Poly's target FTES for Spring 1999 was 14,119. Actual FTES is 13,905, about 1.5% below target. Spring 1999 FTES is down 5.8% from Winter 1999 and down 2.6% from Spring 1998.



The total average units for undergraduates and post-baccalaureates was 13.78, above the target of 13.71. However both undergraduate and postbaccalaureate average unit loads were lower in Spring 1999 than in Spring 1998. Undergraduate students in the the College of Architecture and Environmental Design assumed the highest average unit load at 14.33, followed by the College of Agriculture (14.23); the College of Engineering (14.07);

the College of Business (13.98); the College of Liberal Arts (13.81); and the College of Science and Mathematics (13.63). The proportion of undergraduate students enrolled full-time (12 or more units) in Spring 1999 was 89.9%. This figure is the same as Spring 1998. However, this is a decrease from 92.5% in Fall 1998 and 91.9% in Winter 1999.

**University Student Diversity**

Of the total enrolled students at Cal Poly in Spring 1999, 43.8% are female and 56.2% are male. Among the Colleges, the female/male ratio varies with more females than males in the University Center for Teacher Education (77% female); the College of Liberal Arts (66% female); the College of Science and Mathematics (55% female); and the College of Agriculture (52% female). Males outnumber females in the Colleges of Engineering (82% male); Architecture and Environmental Design (65% male); and Business (58% male).

Cal Poly Spring 1999 enrollment by ethnic origin shows little change from Winter 1999. Approximately

62% of the undergraduates are white, 30% are non-white and less than 1% are international students. 7.6% of enrolled undergraduates chose not to respond to the ethnic origin query (information on student ethnic origin is self-reported). Among post-baccalaureate students enrolled for Spring 1999, 62% are white, 18% are non-white, 4% are international students and 15.6% did not respond.

**CLASS SCHEDULE UPDATE**

The university offered 2,955 total sections (not including Independent Study sections) in Spring 1999. This was 61 sections fewer than Spring 1998.

Comparable data is continuing to be collected and will be available for course planning in the near future.

The university once again participated in the London Study Program, offering 22 sections in Spring 1999. 105 students from different majors attended classes taught by 7 faculty (2 from the College of Agriculture and 5 from the College of Liberal Arts).

**New Students**

Spring 1999 census enrollment numbers indicate 9 new transfer undergraduate students. 14,185 returning and continuing undergraduate students enrolled for Spring 1999 courses. At the post-baccalaureate level, there were 49 new students and 871 continuing students.