

InfoBrief ENROLLMENT

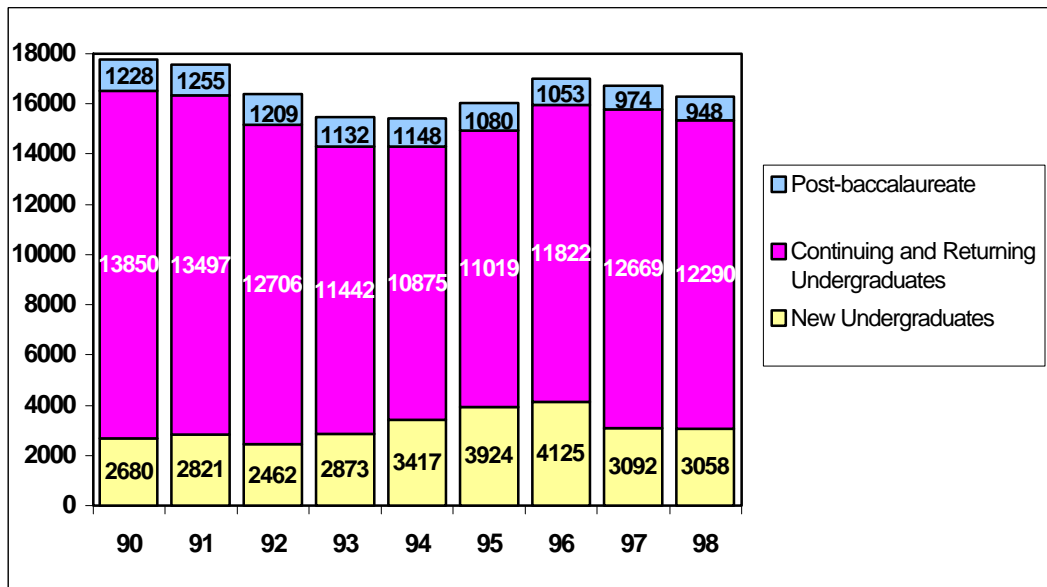
Cal Poly, San Luis Obispo

Institutional Planning and Analysis

Census Data ■ Fall 1998

October 30, 1998

UNIVERSITY HEADCOUNT ENROLLMENT



The total headcount enrollment for Fall 1998 is 16,296 students. The total headcount target for Fall 1998 was set at 16,586, a planned decrease from Fall 1997. The actual headcount enrollment is about 2% below this campus target, but will bring enrollment into balance with operating budget allocations.

HEADCOUNT ENROLLMENT BY COLLEGE

The College of Architecture and Environmental Design experienced the largest increase with 1.6% more students than Fall 1997. The College of Engineering showed the only other increase among the Colleges (at 1%). Colleges that experienced a decrease in enrollment from the Fall of

1997 to Fall 1998 include the College of Liberal Arts (down 8.5%), the College of Science and Mathematics (down 3.8%), the University Center for Teacher Education (with a 3.8% decrease); the College of Business (down 2.7%) and the College of Agriculture (down 2.3%).

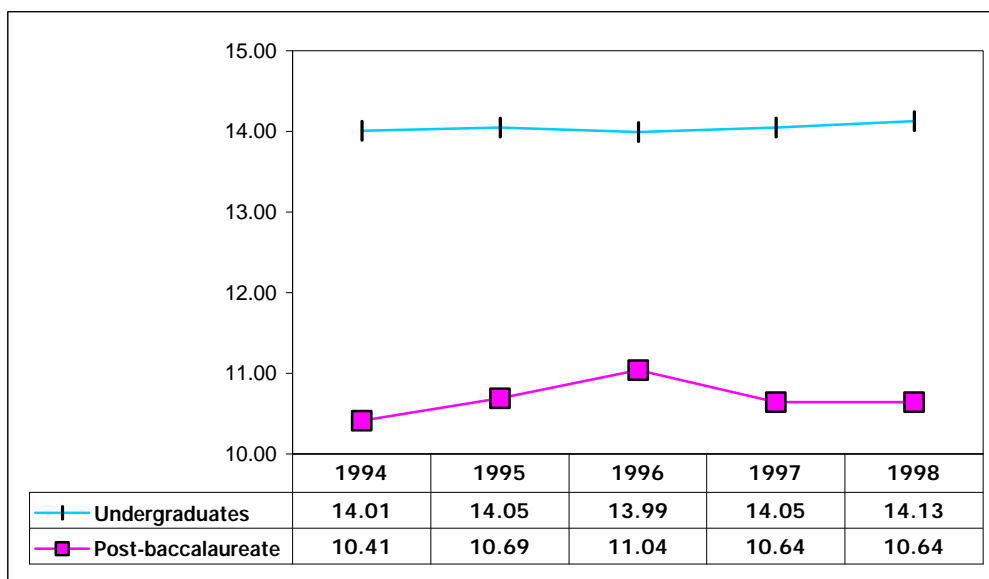
College and University Total Headcount Enrollment (Official Census — 10/30/98)

College	Undergrad	Post Bacc	Headcount Total	Total Student Headcount Target
Agriculture	3360	94	3454	3479
Arch & Environmental Design	1440	64	1504	1499
Business	2285	97	2382	2415
Engineering	3876	131	4007	3915
Liberal Arts	2581	112	2693	2840
Science & Mathematics	1679	95	1774	1812
UCTE	0	328	328	401
Other	127	27	154	225
University Total	15348	948	16296	16586

FULL-TIME EQUIVALENT STUDENTS, AVERAGE UNITS AND FULL-TIME STATUS

Full-Time Equivalent Students (FTES) is a theoretical normal workload equal to 15 units per student per term. It assumes that a student will complete a 186 quarter unit baccalaureate program in 12 quarters or 4 years at 15 units per term. FTES was targeted for Fall 1998 at 15,290. Actual FTES is 15,121, about 1% below target. The Fall 1998 FTES is down 2.2% from Fall 1997.

Fall 1998 continued the trend of an increase in the number of average units per student that has been underway since 1990. This Fall, average units increased once more to 13.92 per student (total undergraduate and postbaccalaureate). Undergraduate students in the College of Agriculture displayed the highest average unit load at 14.34, followed by the College of Business (14.27); the College of Engineering (14.19); the College of Architecture and Environmental Design (14.18); the College of Liberal Arts (13.97); and the College of



Science and Mathematics (13.86).

There was also a slight increase in the proportion of undergraduate students enrolled full-time (12 or more units) in Fall 1998, with 92.5% in the full-time category compared with 92.3% in Fall 1997.

UNIVERSITY STUDENT DIVERSITY

Of the total enrolled students at Cal Poly in Fall 1998, 43.9% are female and 56.1% are male. Among the Colleges, the female/male ratio varies with more females than males in the Colleges of Agriculture (52% female); Liberal Arts (66% female); Science and Mathematics (55% female); and the University Center for Teacher Education (73% female). Males outnumber females in the College of Architecture and Environmental Design (64% male); the College of Business (58% male); and the College of Engineering (82% male).

Cal Poly Fall 1998 enrollment by ethnic origin shows that approximately 62% of the undergraduates are white, 30% are non-white and less than 1% are international students. 7.5% of enrolled undergraduates chose not to respond to the ethnic origin query (information on student ethnic origin is self-reported). Among post baccalaureate students enrolled for Fall 1998, almost 61% are white, 20% are non-white, 3.5% are international students and 15.5% did not respond.

NEW STUDENTS

New undergraduate student numbers were targeted at 3,008 for Fall 1998. Actual enrollment numbers show 2,305 new freshmen, 662 new transfer students and 91 new transitory students. This total of 3,058 new students is 1.6% over the undergraduate target. The transfer student enrollment

includes 72 new lower division transfers and 590 upper division transfers. At the post-baccalaureate level, there are 329 new students for Fall 1998, 9.9% below the target of 365. The target for continuing students for Fall 1998 was 13,213 and 12,744 actually enrolled.

CLASS SCHEDULE UPDATE

In Fall 1998 the university offered approximately 100 more sections (not including Independent Study sections) than were offered last fall. Of the lecture and laboratory capacity (total seats available) the university filled about 87% of that capacity.

Lecture space for Fall Quarter was assigned for the first

time using Schedule25 software, with a resulting utilization of lecture space on campus of 87.3%.

This is the first Fall that IP&A has been able to compare available space with actual enrollment, and expects to offer more such information for course planning in future quarters.