

InfoBrief ENROLLMENT

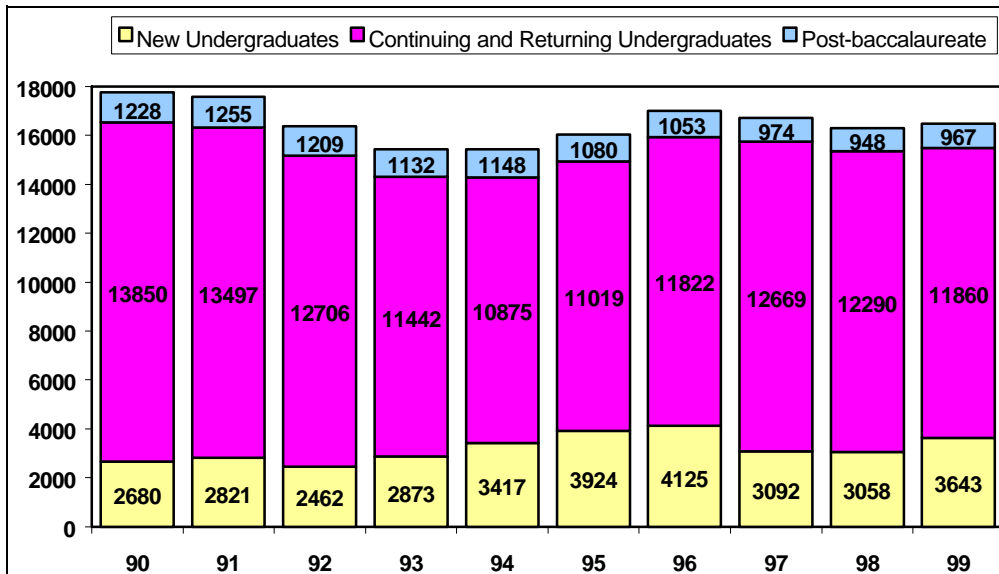
Cal Poly, San Luis Obispo

Institutional Planning and Analysis

Census Data ■ Fall 1999

October 29, 1999

FALL HEADCOUNT ENROLLMENT — University Total



The total headcount enrollment for Fall 1999 is 16,470. This is an increase of 174 students over Fall 1998, but nearly 400 students below the total enrollment target set for Fall 1999. This shortfall is a result of fewer continuing students coming back this Fall than projected. New students, however, slightly exceeded the target with 3,975 new undergraduates and post-baccalaureate students starting at Cal Poly this Fall. With the total Fall enrollment falling short of the target (as did the Summer 1999 enrollment), it is projected that the College Year enrollment will be below the level set by the California State University system Chancellor's Office for Cal Poly this year.

HEADCOUNT ENROLLMENT BY COLLEGE

While we did not reach the target enrollment for the total University, student headcount did increase over Fall 1998. The result varied between colleges, however, with three colleges and the University Center for Teacher Education experiencing enrollment increases and the other three colleges decreasing. The largest increase shown was UCTE (with a 13.7% increase),

followed by the College of Liberal Arts (up 7.7%), the College of Architecture and Environmental Design (up 3.2%), and the College of Business (up 2.4%). Colleges showing a decrease in enrollment included the College of Science and Mathematics (down 3.8%), the College of Engineering (down 1.7%), and the College of Agriculture (down 0.7%).

College and University Total Headcount Enrollment (Official Census — 10/29/99)

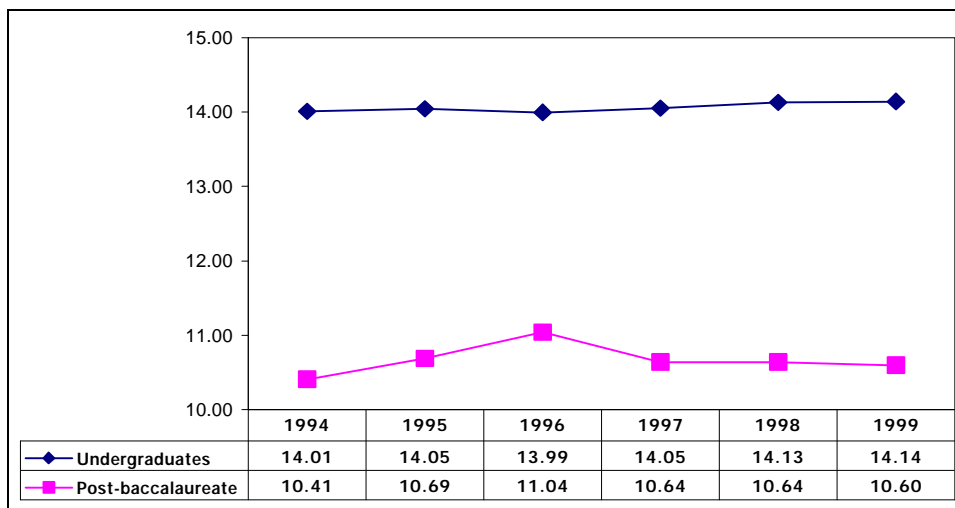
College	Undergraduate	Post Baccalaureate	Headcount Total	Total Student Headcount Target
Agriculture	3,345	86	3,431	3,659
Arch & Environmental Design	1,493	59	1,552	1,595
Business	2,331	108	2,439	2,401
Engineering	3,810	127	3,937	4,072
Liberal Arts	2,814	87	2,901	2,849
Science & Mathematics	1,613	93	1,706	1,808
UCTE	n/a	373	373	338
Other	97	34	131	142
University Total	15,503	967	16,470	16,864

FULL-TIME EQUIVALENT STUDENTS, AVERAGE UNITS AND FULL-TIME STATUS

Full-Time Equivalent Students (FTES) is a theoretical normal workload equal to 15 units per student per term. It assumes that a student will complete a 186 quarter unit baccalaureate program in 12 quarters or 4 years at 15 units per term. FTES was targeted for Fall 1999 at 15,602. Actual FTES is 15,301, about 2% below target. The Fall 1999 FTES is up 1.2% over Fall 1998.

Fall 1999 continued the trend of an increase in the number of average units per student that has been underway since 1990. This Fall, average units increased once more to 13.94 per student (total undergraduate and post-baccalaureate). Undergraduate students in the College of Architecture and Environmental Design displayed the highest average unit load at 14.44, followed by the College of Agriculture (14.29); the College of Engineering (14.23); the College of Business (14.16); the College of Liberal Arts (14.01); and the College of Science and Mathematics (13.75).

Average Undergraduate and Post Baccalaureate Units



There was also a slight increase in the proportion of undergraduate students enrolled full-time (12 or more units) in Fall 1999, with 93.1% in the full-time category compared with 92.5% in Fall 1998.

UNIVERSITY STUDENT DIVERSITY

Cal Poly Fall 1999 enrollment by ethnic origin shows that 58.9% of the undergraduates identified themselves as white, 27.6% non-white and 0.7% are designated as international students. Post baccalaureate students are 60.7% white, 19.5% non-white and 3.4% international students.

A change that was first noticed during analysis of the ethnic origin data for the Fall 1999 Preliminary InfoBrief has proven to be consistent in the census data; the number of undergraduate students choosing "no response" increased from 7.5% of enrolled students in Fall 1998 to 12.8% of undergraduate students choosing this option in Fall 1999 (information on

student ethnic origin is self-reported). There was also an increase in the "no-response" option among post baccalaureate students increasing to 16.4% (up from 15.5% in Fall 1998). If this increase in students declining to select an ethnic origin category continues, it could have implications for the longitudinal tracking of ethnicity trends at Cal Poly and in some federal reporting requirements.

Of the total enrolled students at Cal Poly 45% are female and 55% are male. At the undergraduate level, 44% of the students are female and 56% are male, and at the post-baccalaureate level, 58% of enrolled students are female and 42% are male.

NEW STUDENTS

New undergraduate student numbers were targeted at 3,645 for Fall 1999. Actual enrollment numbers show 2,716 new freshmen, 856 new transfer students and 71 new transitory students for a total of 3,643 new undergraduate students. Part of the new freshmen student enrollment for Fall included students that were part of Cal Poly's first "early decision" process. Just over 1,000 early decision applications

were received, 259 students were "selected," and of that number, 250 (97%) enrolled. New transfer students enrollment for Fall include 162 new lower division transfers and 694 upper division transfers. At the post-baccalaureate level, there are 322 new students for fall (the target was set at 322). The projection for continuing students was 12,898 and 12,505 students actually enrolled.

CLASS SCHEDULE UPDATE

In Fall 1999 the university offered 3,225 total sections (not including Independent Study), a slight increase (27 sections) from Fall 1998. The university filled 96% of lecture and laboratory capacity (based on expected enrollment set by academic departments during the scheduling phases).

After our first full year using Schedule25 to assign general purpose lecture rooms, lecture room utilization was 91%. In addition, two additional lecture rooms were converted to multi-media over the summer and were ready for use the first day of Fall Quarter.