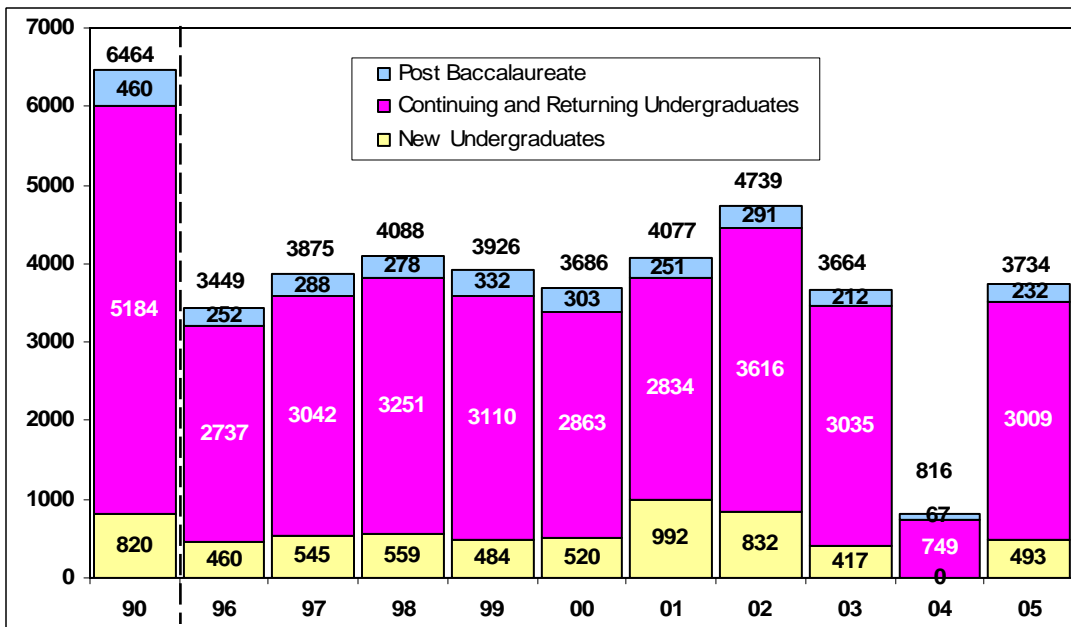


Summer 2005 Census

Enrollment INFO BRIEF

UNIVERSITY HEADCOUNT ENROLLMENT

Cal Poly is using Summer 2003 data in comparison with Summer 2005 data due to limits placed on Summer 2004 enrollment that were necessary to comply with the state budget reduction.



The total headcount enrollment for Summer 2005 is 3,734. This is higher than Summer 2003, but lower than the enrollment target set for Summer 2005 (4,142).

More target-related information can be found at www.ipa.calpoly.edu/targets.html

HEADCOUNT ENROLLMENT BY COLLEGE

Cal Poly's total Summer 2005 enrollment increased 1.9% from Summer 2003. The most significant increases were in the College of Architecture and Environmental Design (up 45.7%), the College of Education (up 17.0%), the College of Engineering (up 6.2%), followed by the College of Agriculture (up 3.7%).

However, the College of Liberal Arts showed a decrease with a decline of 10.7% from 2003. The College of Business showed a similar decrease down 10.1%. The College of Science and Math showed only a slight decrease (down 0.5%).

OFFICIAL College and University Total Headcount Enrollment (Summer Census, 7/29/05)

College	Undergraduate	Post-baccalaureate	Headcount Total
Agriculture	837	25	862
Arch & Environmental Design	339	2	341
Business	472	9	481
Education	n/a	110	110
Engineering	869	40	909
Liberal Arts	596	32	628
Science & Mathematics	371	7	378
Other	18	7	25
Total University Enrollment	3,502	232	3,734

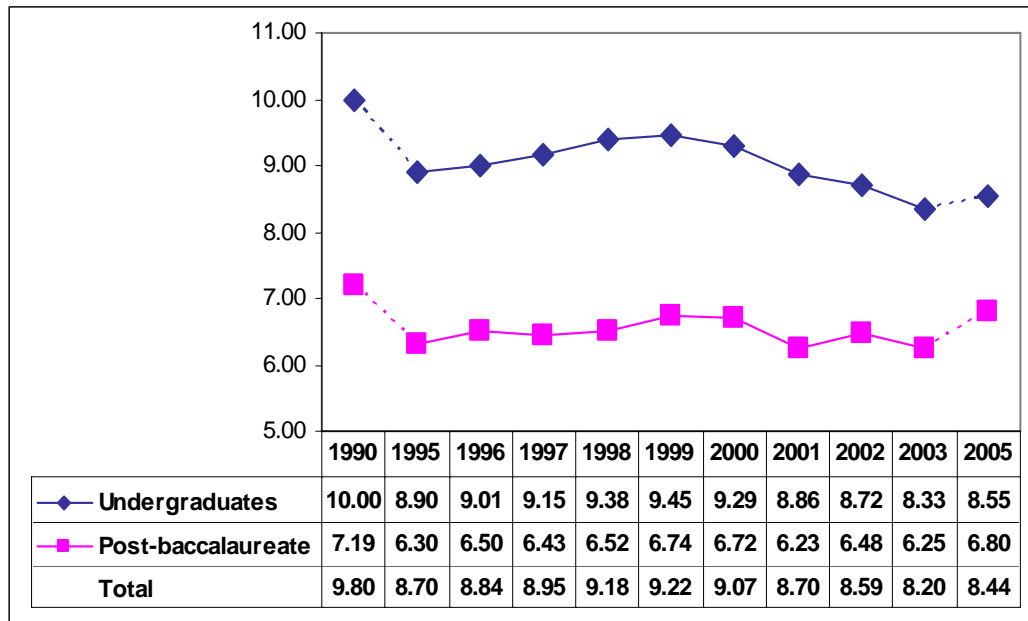
FULL-TIME EQUIVALENT STUDENTS, AVERAGE UNITS AND FULL-TIME STATUS

Full-Time Equivalent Students (FTES) is a theoretical normal workload equal to 15 units per student per term. It assumes that a student will complete a 180 quarter unit baccalaureate program in 12 quarters or 4 years at 15 units per term.

FTES for Summer 2005 is 2,102, below the target set at 2,245.

Summer 2005 average course loads for both undergraduates and post-baccalaureates showed an increase over Summer 2003

Average Undergraduate and Post-baccalaureate Units



The College of Engineering displayed the highest undergraduate average unit load at 8.73, closely followed by the College of Business (8.72). Other colleges were as follows: the College of Architecture and Environmental Design (8.67); the College of Agriculture (8.60); the College of Liberal Arts (8.28); and the College of Science and Mathematics (8.13).

The proportion of undergraduates enrolled full-time (12 or more units) in Summer 2005, increased slightly to 24.6%, from 22.7% in Summer 2003 but still less than 27.5% in Summer 2002. Post-baccalaureates enrolled full-time (9 or more units) increased to 18.5% from 16.5% in Summer 2003.

UNIVERSITY STUDENT DIVERSITY

Of the total enrolled students at Cal Poly in Summer 2005, 47.3% are female and 52.7% are male. Among the colleges, the female/male ratio varies with more females than males in the College of Education (76.4% female), the College of Liberal Arts (73.7% female), the College of Agriculture (61.4% female), and the College of Science and Mathematics (55.8% female). Males outnumber females in the College of Engineering (84.9% male), College of Architecture and Environmental Design (62.2% male), and the College of Business (58.8% male).

Summer 2005 enrollment by ethnic origin shows that 62.0% of the undergraduates identified themselves as white and 28.7% as non-white, 0.7% are designated as international students, and 8.6% of undergraduates chose not to respond to the ethnic origin question.

Among post-baccalaureate students enrolled for Summer 2005, 54.7% are white, 29.7% are non-white, 1.7% are international students and 13.8% did not respond.

FTES—SUMMER AND COLLEGE YEAR

Fall admissions and enrollment do not depend on Summer enrollment levels. Consequently, IP&A does not adjust expectations regarding Fall enrollment based on Summer enrollment. For additional information on 2005-06 targets and an overview/timeline for enrollment monitoring and planning, see the IP&A website at www.ipa.calpoly.edu/targets.html