

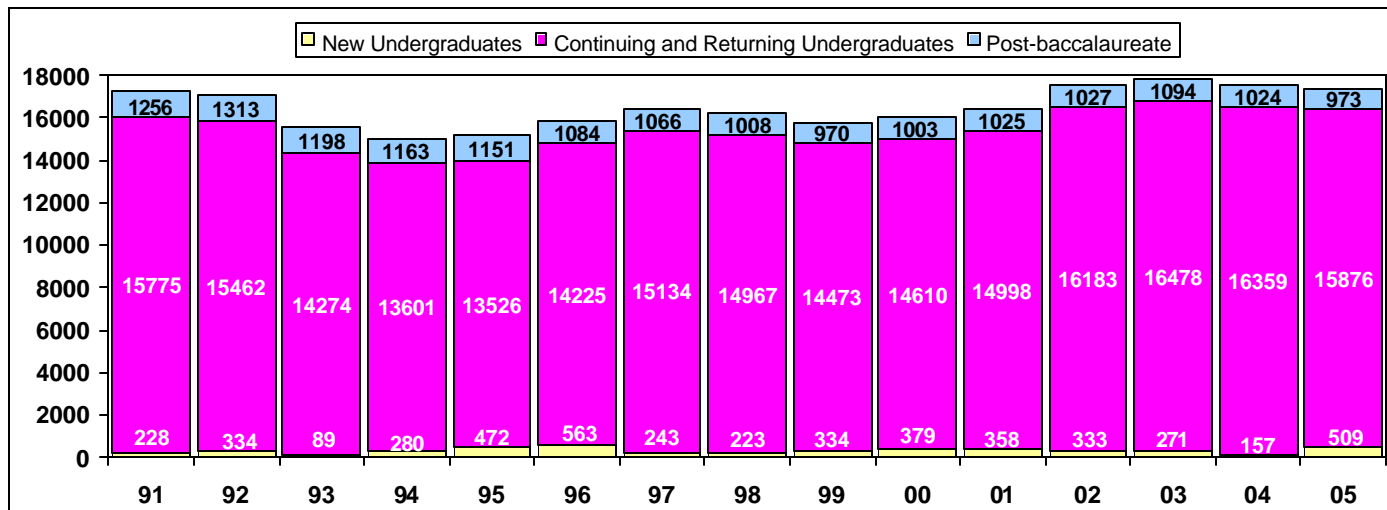
Winter 2005 Census Enrollment

INFO BRIEF

Cal Poly San Luis Obispo

February 11, 2005

TRENDS IN UNIVERSITY HEADCOUNT ENROLLMENT



Winter headcount slightly exceeded the target set in March 2004, but did not meet the revised Winter target of 17,652 that was required to achieve both the increase established by the CSU in August and to compensate for lower Fall headcounts.

When Cal Poly knew that Fall headcount would be low, the campus increased the admission target for Winter. By census new undergraduate enrollment was higher than past Winters but remained below what was needed to compensate for smaller continuing student enrollments in Fall. Cal Poly

enrolled 109 new post-baccalaureate students, up from prior years but insufficient to meet the revised target of 172. Continuing student headcounts for Winter were consistent with our expectations based on actual Fall enrollments.

Full-time equivalent students (FTES) fell short of the target set in March, as well as the revised target of 16,709 FTES for Winter. This results from both the shortfall in headcount and from lower average student unit loads, which were affected by the implementation of new registration procedures.

HEADCOUNT ENROLLMENT BY COLLEGE

While the total enrollment for Winter 2005 was lower than last year, not every college showed a decrease. Enrollment decreased in the College of Education by 19.5%, the College of Science and Mathematics (down by 6.5%), followed by the Col-

lege of Liberal Arts down 4.5%, and the College of Business (down 4.4%). Enrollment increased in the College of Engineering (up 3.7%) the Architecture and Environmental Design (up 1.2%), and the College of Agriculture (up 0.3%).

OFFICIAL College and University Total Headcount Enrollment (Winter Census, 2/11/05)

College	Undergraduate	Post-baccalaureate	Headcount Total
Agriculture	3,527	134	3,661
Arch & Environmental Design	1,882	58	1,940
Business	2,089	85	2,174
Engineering	4,515	255	4,770
Liberal Arts	2,698	96	2,794
Science & Mathematics	1,591	71	1,662
Education	n/a	256	256
Other	83	18	101
Total University Enrollment	16,385	973	17,358

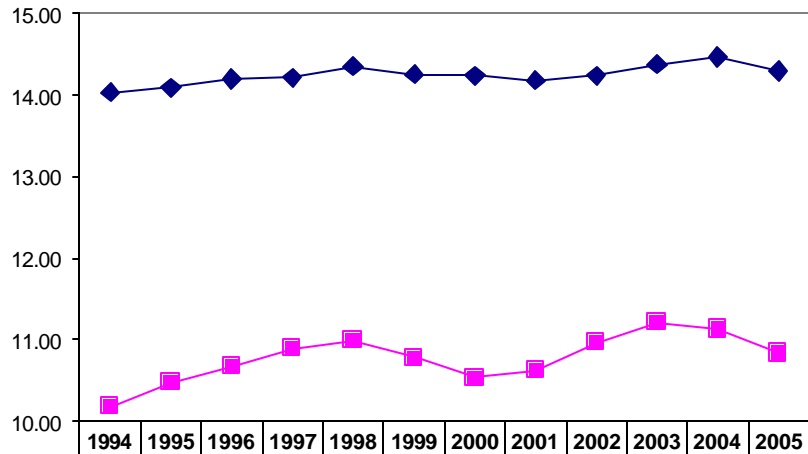
FULL-TIME EQUIVALENT STUDENTS, AVERAGE UNITS AND FULL-TIME STATUS

Full-Time Equivalent Students (FTES) is a theoretical normal workload equal to 15 units per student per term. It assumes that a student will complete a 180 quarter unit baccalaureate program in 12 quarters or 4 years at 15 units per term.

FTES was originally targeted for Winter 2005 at 16,407. After Fall census the target was revised to 16,709. Actual FTES is 16,312, about 0.6% below the original target.

Winter 2005 saw a decrease in the number of average units per student, down from 14.26 in Winter 2004 to 14.10 per student (total enrollment). Both post-baccalaureate and undergraduate unit loads were affected by new registration procedures.

Average Undergraduate and Post-baccalaureate Units



Undergraduates	14.03	14.09	14.19	14.21	14.35	14.25	14.23	14.18	14.23	14.37	14.46	14.29
Post-baccalaureate	10.19	10.48	10.67	10.90	10.99	10.78	10.54	10.63	10.97	11.21	11.13	10.84
Total	13.73	13.81	13.95	14.00	14.11	14.04	14.00	13.95	14.04	14.18	14.26	14.10

Undergraduate students in the College of Architecture and Environmental Design displayed the highest average unit load at 14.50; followed by the College of Business (14.47); the College of Agriculture (14.41); the College of Engineering (14.28); the College of Liberal Arts (14.23); and the College of Science and Mathematics (13.83).

There was a slight decrease in the proportion of undergraduate students enrolled full-time (12 or more units) in Winter 2005 (94.0%) compared to Winter 2004 (94.8%). Following the typical enrollment pattern, this is lower than Fall 2003 (95.2%).

UNIVERSITY STUDENT DIVERSITY

Of the total enrolled students at Cal Poly in Winter 2005, 43.2% are female and 56.8% are male. Among the colleges, the female/male ratio varies with more females than males in the University Center for Teacher Education (74.2% female), the College of Liberal Arts (70.2% female), the College of Agriculture (57.7% female), and the College of Science and Mathematics (54.6% female). Males outnumber females in the College of Engineering (85.4% male), College of Architecture and Environmental Design (66.2% male), and the College of Business (57.3% male).

Winter 2005 enrollment by ethnic origin shows that 64.4% of the undergraduates identified themselves as white and 26.2% as non-white, 0.7% are designated as international students, and 8.7% of undergraduates chose not to respond to the ethnic origin question (information on student ethnic origin is self-reported).

Among post-baccalaureate students enrolled for Winter 2005, 58.7% are white, 23.3% are non-white, 2.5% are international students, and 15.5% did not respond.

NEW STUDENTS

Cal Poly processed 1,168 undergraduate applications for Winter 2005. Of those, 735 students were selected, and census numbers indicate 5 new freshmen, 90 lower division transfers, 414 upper division transfers, and 20 "other"* undergraduate students actually enrolled. 15,815 returning and continuing undergraduates and also enrolled.

At the post-baccalaureate level, Cal Poly processed 238 applications and selected 134 students. Registered for Winter 2004 courses were 109 new post-baccalaureate students, 1 "other"* post-baccalaureate, and 863 returning and continuing students.

* "Others" include transitory/visiting students, non-degree-seeking faculty and staff, and students applying for the Cuesta College Ag Tech program.