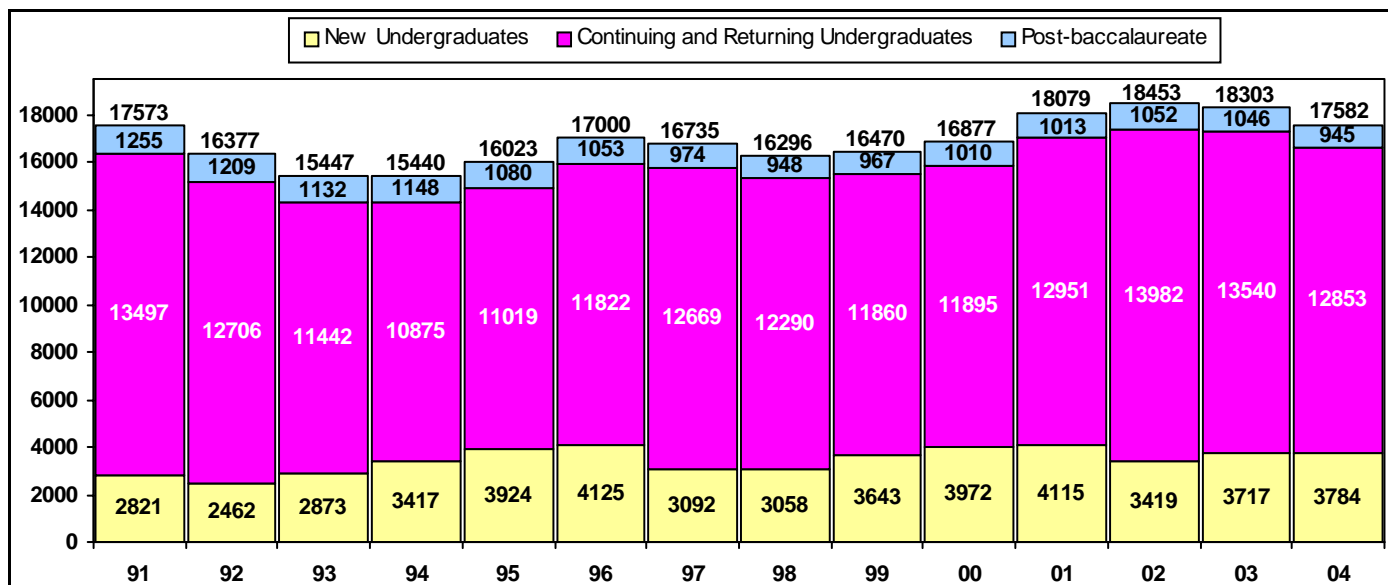


Fall 2004 Census Enrollment INFO BRIEF

Cal Poly San Luis Obispo

October 28, 2004

UNIVERSITY HEADCOUNT ENROLLMENT



The total headcount enrollment for Fall 2004 is 17,582. This is 721 students fewer than Fall 2002, and about 400 students fewer than the target set in March 2004 for Fall 2004. New undergraduate enrollment was over target by about 30 students. For Fall 2004 targets, go to

the IP&A target web site at <http://www.ipa.calpoly.edu/targets/045tar.htm>. In contrast, continuing undergraduate student headcount enrollment was under the Fall 2004 estimate by about 385. Continuing post-baccalaureate headcount also fell short, by about 75 students.

HEADCOUNT ENROLLMENT BY COLLEGE

While we did not meet the total enrollment target set for Fall 2004, the shortfall was not shared equally among the colleges. In fact, three colleges (Agriculture, Architecture, and Engineering) exceeded their enrollment targets. Overall university enrollment decreased from last year. The largest change was seen in the College of Education, a decrease of 28.8%. Enrollment decreases

were also seen in the College of Business (10.1%), the College of Liberal Arts (9.1%), the College of Science and Math (7.8%), the College of Agriculture (1.7%) and the College of Architecture and Environmental Design (0.8%). The only increase occurred in the College of Engineering (up 3.0% over Fall 2003).

OFFICIAL College and University Total Headcount Enrollment (10/28/04)

College	Undergraduate	Post-baccalaureate	Headcount Total	Total Student Headcount Target
Agriculture	3,568	136	3,704	3,633
Arch & Environmental Design	1,878	54	1,932	1,919
Business	2,077	80	2,157	2,344
Engineering	4,678	266	4,944	4,786
Liberal Arts	2,708	88	2,796	3,003
Science & Mathematics	1,631	70	1,701	1,841
Education	n/a	226	228	312
Other	97	23	120	143
Total University Enrollment	16,637	945	17,582	17,981

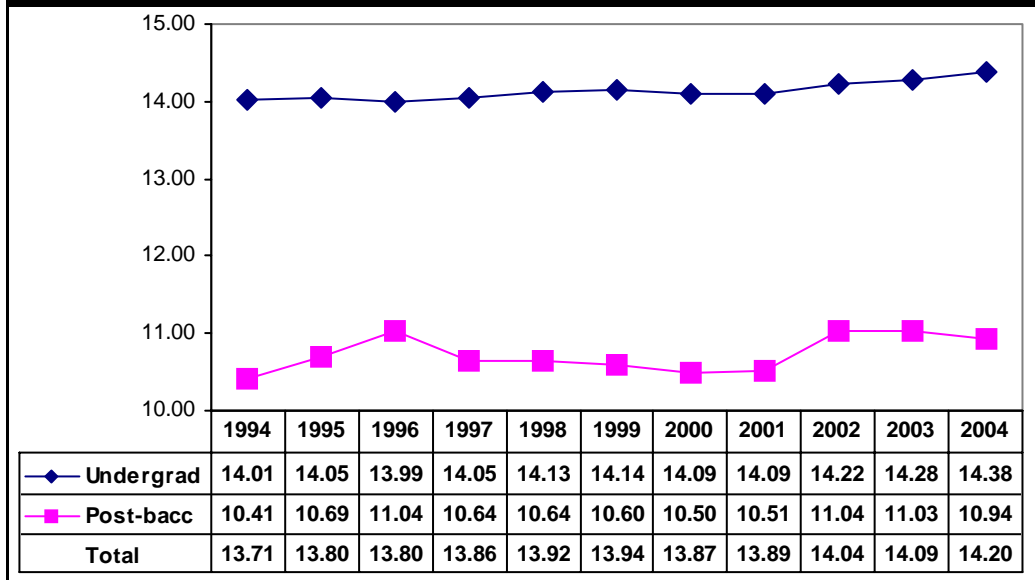
FULL-TIME EQUIVALENT STUDENTS, AVERAGE UNITS AND FULL-TIME STATUS

Full-Time Equivalent Students (FTES) is a theoretical normal workload equal to 15 units per student per term. It assumes that a student will complete a 180 quarter unit baccalaureate program in 12 quarters or 4 years at 15 units per term.

FTES was targeted for Fall 2004 at 16,834. Actual FTES is 16,643, 1.1% short of target. Higher-than-expected student loads helped to compensate for a lower headcount.

Undergraduate students in the College of Architecture and Environmental Design and the College of Agriculture displayed the highest average unit load at 14.54. Average undergraduate units for the remaining colleges include the College of Business (14.42); the College of Engineering (14.39); the College of Liberal Arts (14.35); and the College of Science and Mathematics (14.06).

Average Undergraduate and Post-baccalaureate Units



The proportion of undergraduate students enrolled full-time (12 or more units) in Fall 2003 was 95.1%, holding constant with last year.

Post-baccalaureate student average load decreased from last year to 10.94 units.

UNIVERSITY STUDENT DIVERSITY

Cal Poly Fall 2004 enrollment by ethnic origin shows that 64.2% of the undergraduates identify themselves as white, 26.2% as non-white, and 0.7% are designated as international students. Post-baccalaureate students are 58.5% white, 23.0% non-white, and 3.0% international students. There was another decrease in the overall number of students choosing "no response" in the ethnic origin category. Down from a high of 13.0% in Fall 2000, 8.9% of the Fall 2004 undergraduates chose not to report this information. In contrast, only 3.8%

of undergraduates in Fall 1990 chose not to respond. (Student ethnic origin is self-reported.) Among the post-baccalaureate students enrolled for Fall 2004, 15.5% chose the "no response" option, also down from a Fall 2000 high of 17.8%.

Of the total enrolled students at Cal Poly 43% are female and 57% are male. At the undergraduate level 43% of the students are female, and at the post-baccalaureate level 49% of enrolled students are female.

NEW STUDENTS

Census enrollment numbers for Fall 2004 show 2,930 new freshmen, 771 new transfer students, and 82 new transitory students for a total of 3,784. Additionally, there were 53 students seeking a second baccalaureate or returning to a new major for a total of 3,836 new undergraduates. At the

post-baccalaureate level, 349 students were targeted, but 379 new students actually enrolled for Fall.

For more information on new student enrollment and applications, see the Fall 2004 *Applications InfoBrief*.