

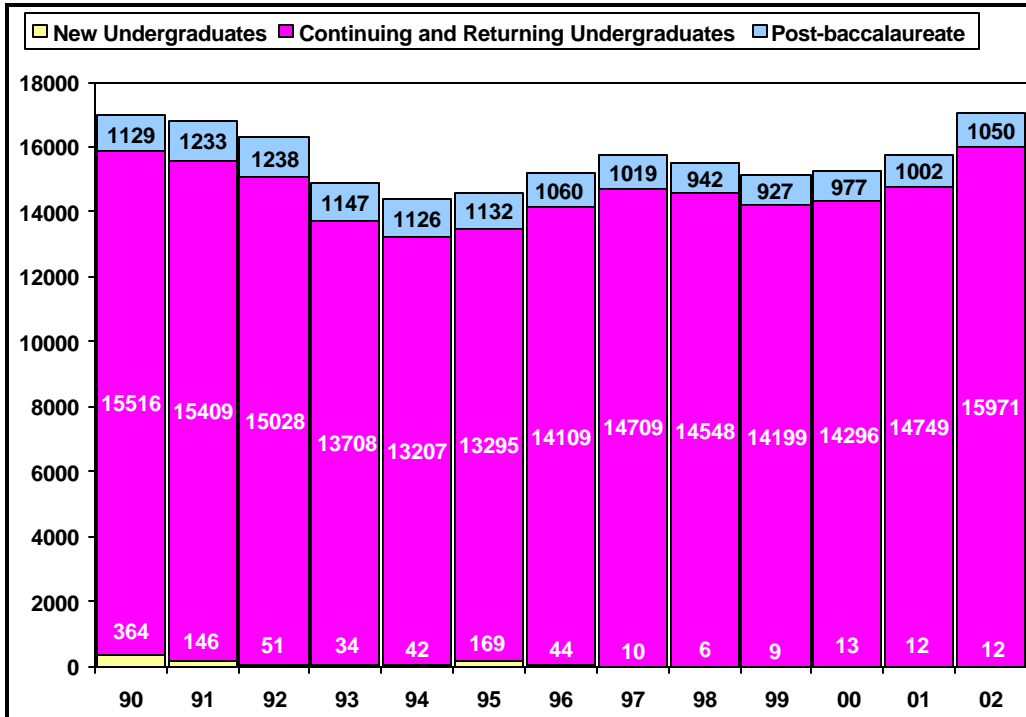
Spring 2002 Census Enrollment

INFO BRIEF

Cal Poly San Luis Obispo

May 10, 2002

UNIVERSITY HEADCOUNT ENROLLMENT



The total headcount enrollment for Spring 2002 is 17,033. This is an increase of 1,270 students over Spring 2001, and higher than the original enrollment target set for set last March (16,397) and the revised projection after Fall census (16,835). Spring 2001 FTES is 15,647, also above target (15,050) and the revised projection (15,528).

The final College Year FTES enrollment is 17,060, 5.3% above the level assigned to the campus by the Chancellor's Office. The overage was due in part to a higher than projected number of continuing students returning in Fall 2001, with that pattern continuing in Winter and Spring quarters.

More target-related information can be found at www.calpoly.edu/~inststdy/targets.html

HEADCOUNT ENROLLMENT BY COLLEGE

While we exceeded the total enrollment target set for Spring 2002, the enrollment increases were not shared equally among the six colleges. The largest increase over Spring 2001 occurred in the College of Business (up 12.1%), the College of Liberal Arts (up 9.9%), followed closely by the College of Science and Mathematics (up 9.6%), the College of Engineering (up 9.3%), the College of Architecture and Environmental

Design (up 7.6%), and the College of Agriculture (up 4.1%). Enrollment in the University Center for Teacher Education was down 16 students from last Spring, a decrease of 4.3%.

Post-baccalaureate headcount enrollment exceeded target in Spring 2002 with 1,050 students enrolled. Previous quarters in CY 2001-02, however, fell below targeted post-baccalaureate enrollments.

OFFICIAL College and University Total Headcount Enrollment (Spring Census, 5/10/02)

College	Undergraduate	Post-baccalaureate	Headcount Total
Agriculture	3,348	125	3,473
Arch & Environmental Design	1,589	58	1,647
Business	2,351	120	2,471
Engineering	4,061	193	4,254
Liberal Arts	2,948	84	3,032
Science & Mathematics	1,602	89	1,691
UCTE	n/a	353	353
Other	84	28	112
Total University Enrollment	15,983	1,050	17,033

FULL-TIME EQUIVALENT STUDENTS, AVERAGE UNITS AND FULL-TIME STATUS

Full-Time Equivalent Students (FTES) is a theoretical normal workload equal to 15 units per student per term. It assumes that a student will complete a 180 quarter unit baccalaureate program in 12 quarters or 4 years at 15 units per term.

FTES was targeted for Spring 2002 at 15,050. Actual FTES is 15,647, 4.0% above the original target set in March 2001 and 0.8% above the revised projection from February 2002 (15,528).

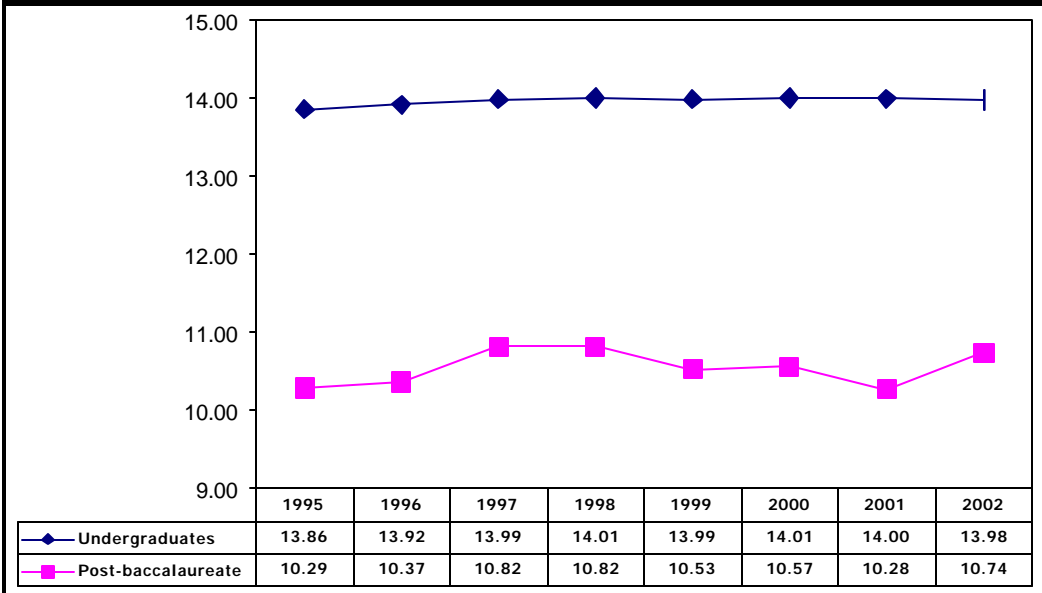
The internal CY FTES target for 2001-02 was set at 2.3% above the assigned CY FTES to avoid a shortfall in CY enrollment. The Chancellor's Office is providing one time

funding for 200 CY FTES over target.

Spring 2002 saw a slight increase in the number of average units per student, up from 13.76 in Spring 2001 to 13.78 per student (total enrollment). The undergraduate average unit load decreased slightly from Spring 2001, but the post-baccalaureate average unit load increased from 10.28 to 10.74 units.

Undergraduate students in the College of Architecture and Environmental Design displayed the highest average unit load

Average Undergraduate and Post-baccalaureate Units



at 14.33, followed by the College of Agriculture (14.25); the College of Engineering (13.98); the College of Business (13.95); the College of Liberal Arts (13.79); and the College of Science and Mathematics (13.65).

There was a slight increase in the proportion of undergraduate students enrolled full-time (12 or more units) in Spring 2002 (91.8%) compared to Spring 2001 (90.9%). However, following the typical enrollment pattern, this is lower than both Winter 2002 (93.4%) and Fall 2001 (94.3%).

UNIVERSITY STUDENT DIVERSITY

Of the total enrolled students at Cal Poly in Spring 2002, 45.3% are female and 54.7% are male. Among the colleges, the female/male ratio varies with more females than males in the University Center for Teacher Education (77.1% female), the College of Liberal Arts (71.4% female), the College of Science and Mathematics (56.7% female), and the College of Agriculture (56.5% female). Males outnumber females in the College of Engineering (83.8% male), College of Architecture and Environmental Design (65.1% male), and the College of Business (57.9% male).

Cal Poly Spring 2002 enrollment by ethnic origin shows that 61.1% of the undergraduates identified themselves as white and 25.8% as non-white, 1.0% are designated as international students, and 12.1% of undergraduates chose not to respond to the ethnic origin question (information on student ethnic origin is self-reported).

Among post-baccalaureate students enrolled for Spring 2002, 61.7% are white, 20.7% are non-white, 3.9% are international students and 13.7% did not respond.

NEW STUDENTS

Cal Poly processed 137 undergraduate applications for Spring 2002. 31 students were selected, and census numbers indicate 3 new freshmen, 4 lower division transfers, and 5 upper division transfers actually enrolled for Spring 2002. 15,960 returning and continuing undergraduates and 11 other new undergraduate students also enrolled.

At the post-baccalaureate level, Cal Poly processed 227 applications and selected 143 students. 104 new post-baccalaureate students, 940 returning and continuing students, and 6 other new post-baccalaureate students registered for Spring 2002 courses.