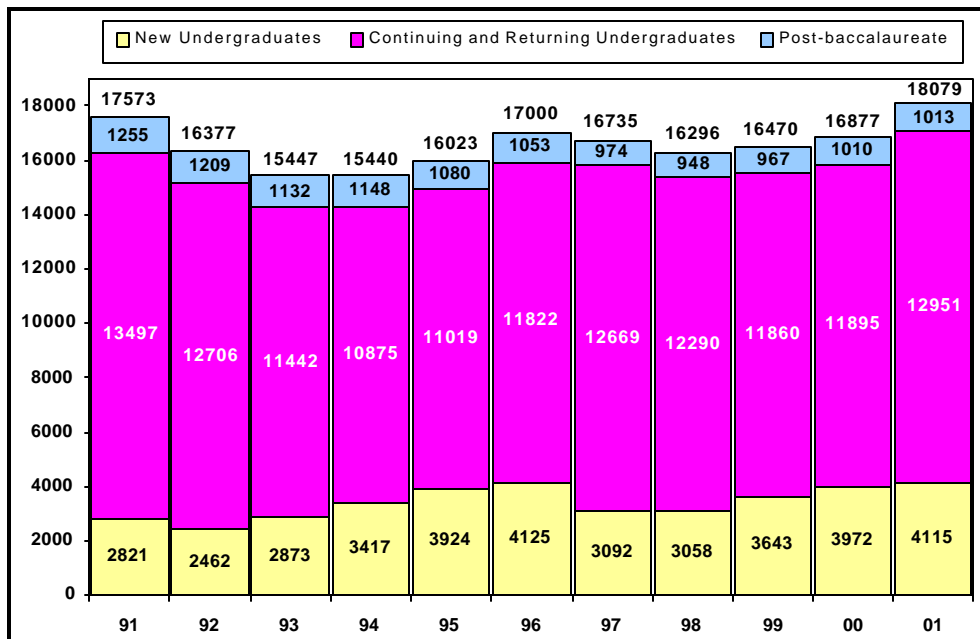


UNIVERSITY HEADCOUNT ENROLLMENT

The total headcount enrollment for Fall 2001 is 18,079. This is an increase of 1,202 students over Fall 2000, and about 413 students above the total enrollment target set in March 2001 for Fall 2001.

Undergraduate continuing student enrollment was over the projected number for the first time in several years. The projection for all continuing and returning undergraduate students was 12,006. This projection was derived in part from information collected during the Spring 2001 registration survey. Students were asked "Are you planning to enroll for Fall 2001?" Approximately 11,800 undergraduate students answered "Yes," with about 430 students "undecided." The actual undergraduate number enrolling was 12,951, exceeding by over 700 the number of students who had either planned to return or were undecided when they registered for Spring 2001.



Post-baccalaureate enrollment was under target for both new and continuing students.

HEADCOUNT ENROLLMENT BY COLLEGE

While we exceeded the total enrollment target set for Fall 2001, the increase was not shared equally among the colleges. The largest increase occurred in the College of Engineering (up 10.5%), followed by the College of Business (up 9.8%), the College of Liberal Arts (up 7.9%), the College of Architecture and Environmental Design (up 6.9%), the College of

Science and Mathematics (up 6.3%), and the College of Agriculture (up 3.0%). The lower-than-expected post-baccalaureate enrollment seen throughout the university was especially apparent in the University Center for Teacher Education, the only unit to show a decrease in enrollment from last year (down 3.2%).

OFFICIAL College and University Total Headcount Enrollment (11/1/01)

College	Undergraduate	Post-baccalaureate	Headcount Total	Total Student Headcount Target
Agriculture	3,574	101	3,675	3,620
Arch & Environmental Design	1,678	56	1,734	1,719
Business	2,464	115	2,579	2,401
Engineering	4,456	166	4,622	4,477
Liberal Arts	3,082	90	3,172	3,174
Science & Mathematics	1,699	79	1,778	1,709
UCTE	n/a	364	364	396
Other	113	42	155	170
Total University Enrollment	17,066	1,013	18,079	17,666

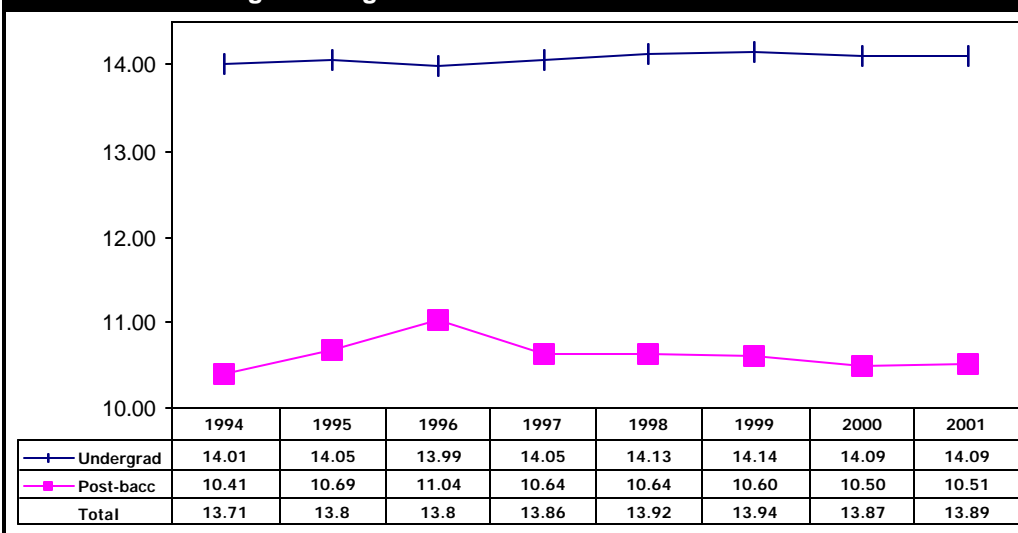
FULL-TIME EQUIVALENT STUDENTS, AVERAGE UNITS AND FULL-TIME STATUS

Full-Time Equivalent Students (FTES) is a theoretical normal workload equal to 15 units per student per term. It assumes that a student will complete a 180 quarter unit baccalaureate program in 12 quarters or 4 years at 15 units per term.

FTES was targeted for Fall 2001 at 16,370. Actual FTES is 16,745, 2.3% above target. Fall 2001 FTES was 1,139 higher than Fall 2000.

The number of average units per student for Fall 2001 was slightly greater than Fall 2000 (total undergraduate and post-baccalaureate).

Average Undergraduate and Post-baccalaureate Units



Undergraduate students in the College of Architecture and Environmental Design displayed the highest average unit load at 14.37, followed closely by the College of Agriculture (14.35). Average undergraduate units for the remaining colleges include the College of Engineering (14.13); the College of Business (14.04); the College of Liberal Arts (13.97); and

the College of Science and Mathematics (13.74).

The proportion of undergraduate students enrolled full-time (12 or more units) continued to increase in Fall 2001, with 94.3%, compared to 93.3% in Fall 2000, 93.1% in Fall 1999, and 92.5% in Fall 1998.

UNIVERSITY STUDENT DIVERSITY

Cal Poly Fall 2001 enrollment by ethnic origin shows that 61.1% of the undergraduates identified themselves as white, 26.2% as non-white, and 1.0% are designated as international students. Post-baccalaureate students are 60.7% white, 19.4% non-white, and 4.2% international students.

of undergraduates in Fall 1990 chose not to respond. (Student ethnic origin is self-reported.) Among the post-baccalaureate students enrolled for Fall 2001, 15.6% chose the "no response" option, also down from a Fall 2000 high of 17.8%.

There was a decrease in the number of students choosing "no response" in the ethnic origin category. Down from a high of 13.0% in Fall 2000, 11.7% of the Fall 2001 undergraduates chose not to report this information. In contrast, only 3.8%

Of the total enrolled students at Cal Poly 45% are female and 55% are male. At the undergraduate level, 45% of the students are female and 55% are male, and at the post-baccalaureate level, 56% of enrolled students are female and 44% are male.

NEW STUDENTS

When we compare new student targets to new student enrollments we need to look at both Fall and Summer enrollment data because of the special summer programs that started in Summer 2001. Students enrolled in Summer Jump Start, Summer Institute and other students who were selected for Fall but elected to start in Summer need to be counted with the new students for Fall in order to make a true comparison between the targets and the actual "new" Fall enrollment. When these new student enrollments are combined, the total new undergraduate students equal 4,590, just six students below the Fall target.

Actual census enrollment numbers for Fall 2001 show 3,003 new freshmen (enrolling first in Fall quarter), 1,030 new transfer students, and 104 other new students (including transitory students, those seeking a second baccalaureate, and those returning to a new major) for a total of 4,137 new undergraduates. In addition, the number admitted for Fall who chose to start in Summer was 453. At the post-baccalaureate level, there are 327 new students for Fall (the target was set at 360).

Cal Poly received 1,848 early decision applications for Fall 2001, 841 students were "selected," and 665 (79%) enrolled.