

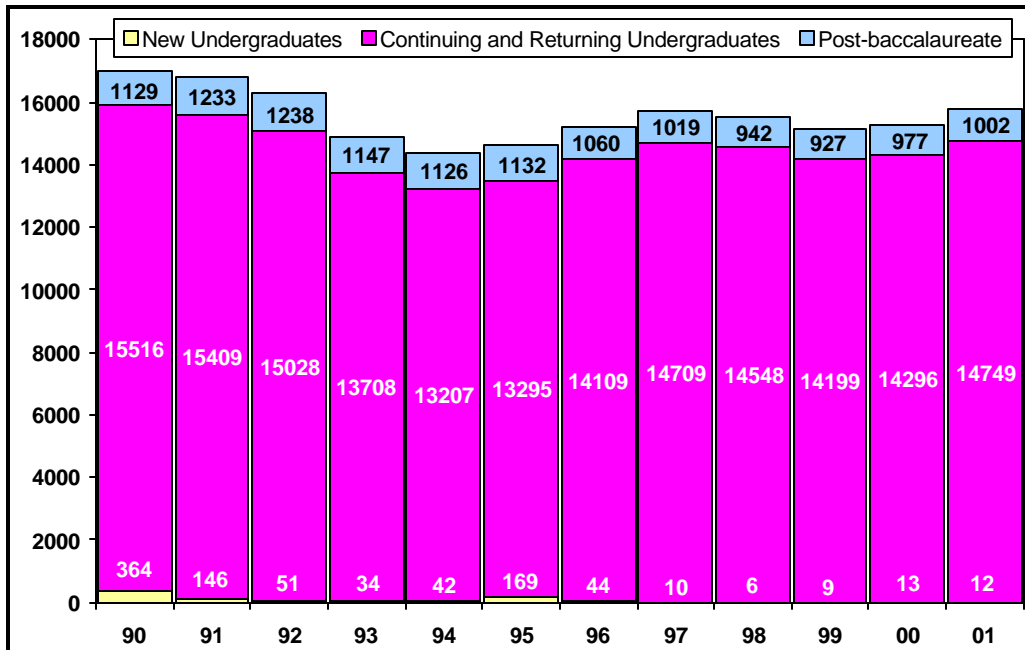
Spring 2001 Census Enrollment

INFO BRIEF

Cal Poly San Luis Obispo

May 10, 2001

UNIVERSITY HEADCOUNT ENROLLMENT



The total headcount enrollment for Spring 2001 is 15,763. This is an increase of 477 students over Spring 2000, but not as high as the enrollment target set for Spring 2001 (15,811). Spring 2001 FTES is 14,464, less than one percent below target (14,508).

The final College Year FTES enrollment is 15,847, about one percent below the level assigned to the campus by the Chancellor's Office.

More target-related information can be found at www.calpoly.edu/~inststdy/targets.html

HEADCOUNT ENROLLMENT BY COLLEGE

While we did not reach the target enrollment for the total University, student headcount did increase 3.1% over Spring 2000. The result varied among colleges, however, with four colleges experiencing enrollment increases and two other colleges decreasing slightly. The largest increase shown was the College of Engineering (up 8.4%), followed by the College of

Agriculture (up 5.8%), the College of Architecture and Environmental Design (up 4.4%), and the College of Liberal Arts (up 0.3%). Enrollment decreases appeared in the College of Business (down 1.9%) and the College of Science and Mathematics (down 1.2%). Enrollment in the University Center for Teacher Education was stable (up 2 students over last Spring).

OFFICIAL College and University Total Headcount Enrollment (Spring Census, 5/10/01)

College	Undergraduate	Post-baccalaureate	Headcount Total
Agriculture	3,224	112	3,336
Arch & Environmental Design	1,484	46	1,530
Business	2,093	112	2,205
Engineering	3,739	152	3,891
Liberal Arts	2,672	86	2,758
Science & Mathematics	1,448	95	1,543
UCTE	n/a	369	369
Other	101	30	131
Total University Enrollment	14,761	1,002	15,763

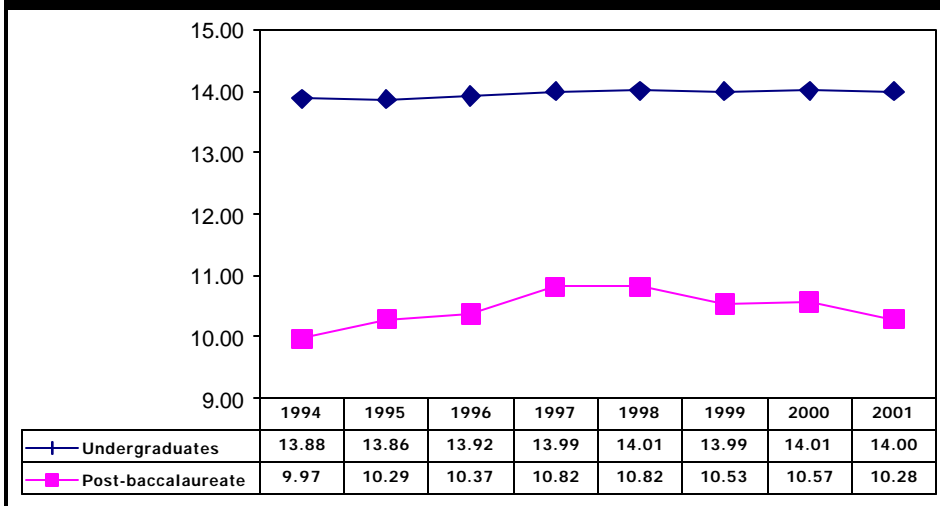
FULL-TIME EQUIVALENT STUDENTS, AVERAGE UNITS AND FULL-TIME STATUS

Full-Time Equivalent Students (FTES) is a theoretical normal workload equal to 15 units per student per term. It assumes that a student will complete a 180 quarter unit baccalaureate program in 12 quarters or 4 years at 15 units per term. Actual FTES for Spring 2001 is 14,464, less than one percent below target. Spring 2001 FTES was 2.8% more than Spring 2000.

Spring 2001 saw a slight decrease in the number of average units per student, down from 14.01 in Spring 2000 to 14.00 per student (total

enrollment). Post-baccalaureate unit load showed a larger decrease than undergraduate load. Undergraduate students in the College of Architecture and Environmental Design displayed the highest average unit load at 14.47, followed by the College of Agriculture (14.31); the College of Engineering (14.02); the College of Liberal Arts (13.82); the College of Business (13.76); and the

Average Undergraduate and Post-baccalaureate Units



College of Science and Mathematics (13.67).

There was a slight increase in the proportion of undergraduate students enrolled full-time (12 or more units) in Spring 2001 (90.9%) compared to Spring 2000 (90.3%). However, following the typical enrollment pattern, this is lower than Winter 2001 (92.3%).

UNIVERSITY STUDENT DIVERSITY

Of the total enrolled students at al Poly in Spring 2001, 44.9% are female and 55.1% are male. Among the colleges, the female/male ratio varies with more females than males in the University Center for Teacher Education (78.3% female), the College of Liberal Arts (69.1% female), the College of Science and Mathematics (55.3% female), and the College of Agriculture (54.4% female). Males outnumber females in the College of Engineering (82.9% male), the College of Architecture and Environmental Design (65.2% male), and the College of Business (57.3% male).

Cal Poly Spring 2001 enrollment by ethnic origin shows that 59.7% of the undergraduates identified themselves as white and 26.2% as non-white. 1.0% are designated as international students, and 13.1% of undergraduates

chose not to respond to the ethnic origin question (information on student ethnic origin is self-reported). Among post-baccalaureate students enrolled for Spring 2001, 61.7% are white, 19.6% are non-white, 3.5% are international students and 15.3% did not respond.

NEW STUDENTS

Cal Poly processed 147 undergraduate applications for Spring 2001. 36 students were selected, and census numbers indicate 12 new students actually enrolled in courses. 14,735 returning and continuing undergraduates and 14 undergraduate transitory students also enrolled. At the post-baccalaureate level, Cal Poly processed 213 applications and selected 113 students. 54 new post-baccalaureates and 948 returning and continuing students registered for Winter 2001.