

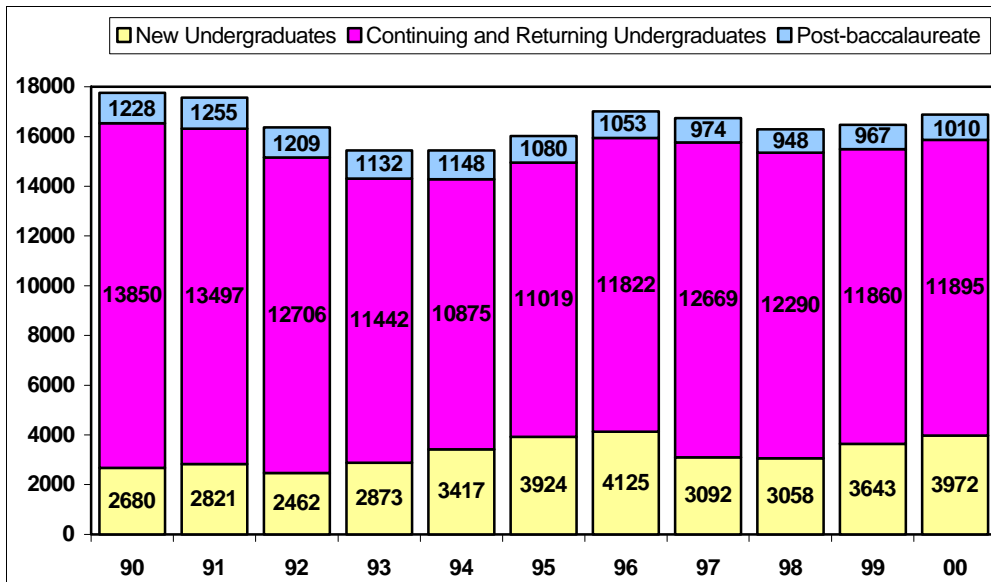
Fall 2000 Census Enrollment

INFO BRIEF

Cal Poly San Luis Obispo

October 26, 2000

UNIVERSITY HEADCOUNT ENROLLMENT



The total headcount enrollment for Fall 2000 is 16,877. This is an increase of 407 students over Fall 1999, but about 150 students below the total enrollment target set for Fall 2000. This shortfall is a result of fewer continuing students coming back this Fall than projected. New students, however, slightly exceeded the target with 4,313 new undergraduates and post-baccalaureate students starting at Cal Poly this Fall. With the total Fall enrollment falling short of the target (as did the Summer 2000 enrollment), it is projected that the College Year enrollment will be below the level set by the California State University system Chancellor's Office for Cal Poly this year.

HEADCOUNT ENROLLMENT BY COLLEGE

While we did not reach the target enrollment for the total University, student headcount did increase over Fall 1999. The result varied between colleges, however, with four colleges and the University Center for Teacher Education experiencing enrollment increases and two other colleges decreasing. The largest increase shown was the College of Engineering

(up 6.2%), followed by the College of Architecture and Environmental Design (up 4.5%), the College of Agriculture (up 4.0%), the College of Liberal Arts (up 1.3%), and UCTE (with a 0.8% increase). Colleges showing a decrease in enrollment included the College of Science and Mathematics (down 2.0%) and the College of Business (down 3.7%).

OFFICIAL College and University Total Headcount Enrollment (10/26/00)

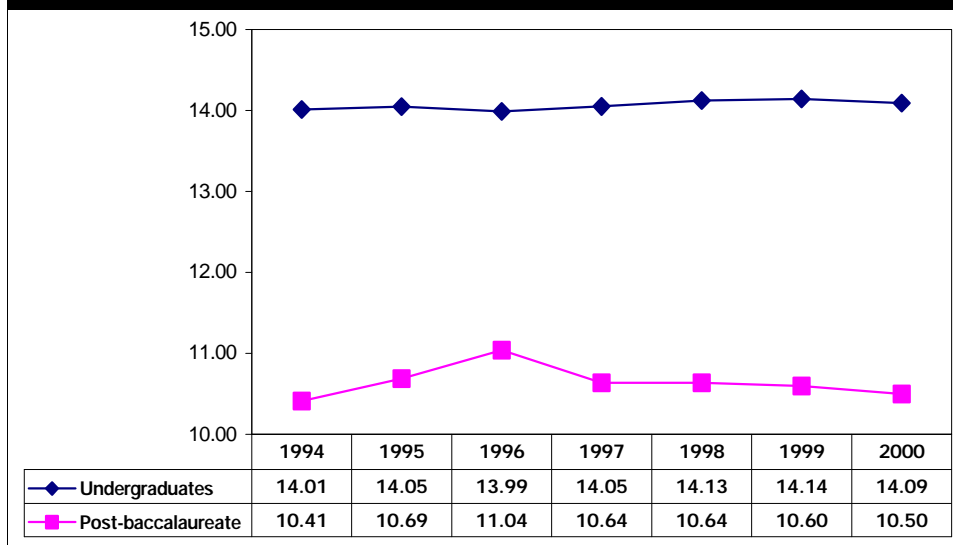
College	Undergraduate	Post-baccalaureate	Headcount Total	Total Student Headcount Target
Agriculture	3,473	95	3,568	3,574
Arch & Environmental Design	1,575	47	1,622	1,582
Business	2,226	122	2,348	2,523
Engineering	4,034	149	4,183	4,086
Liberal Arts	2,849	90	2,939	2,953
Science & Mathematics	1,576	96	1,672	1,796
UCTE	n/a	376	376	388
Other	134	35	169	126
Total University Enrollment	15,867	1,010	16,877	17,028

FULL-TIME EQUIVALENT STUDENTS, AVERAGE UNITS AND FULL-TIME STATUS

Full-Time Equivalent Students (FTES) is a theoretical normal workload equal to 15 units per student per term. It assumes that a student will complete a 186 quarter unit baccalaureate program in 12 quarters or 4 years at 15 units per term. FTES was targeted for Fall 2000 at 15,799. Actual FTES is 15,606, 1.2% below target. Fall 2000 FTES was nearly equal to Fall 1999.

Fall 2000 saw a decrease in the number of average units per student, down from 13.94 in Fall 1999 to 13.87 per student (total undergraduate and post-baccalaureate). Undergraduate students in all of the colleges experienced a decrease in their average units. The College of Architecture and Environmental Design displayed the highest average unit load at 14.36, followed by the College of Agriculture (14.25); the College of Engineering (14.15); the College of Business (14.06); the College of Liberal Arts (13.98); and the College of Science and Mathematics (13.82).

Average Undergraduate and Post-baccalaureate Units



There was also a slight increase in the proportion of undergraduate students enrolled full-time (12 or more units) in Fall 2000, with 93.3% in the full-time category compared with 93.1% in Fall 1999 and 92.5% in Fall 1998.

UNIVERSITY STUDENT DIVERSITY

Cal Poly Fall 2000 enrollment by ethnic origin shows that 59.7% of the undergraduates identified themselves as white, 26.4% non-white and 1.0% are designated as international students. Post-baccalaureate students are 58.2% white, 20.5% non-white and 3.5% international students.

Consistent with Fall 1999 data, the number of undergraduate students choosing "no response" continues to increase. 7.5% of enrolled students in Fall 1998 and 12.8% in Fall 1999 chose to not report this information. 13.0% of undergraduate students chose this option in Fall 2000. (Information on student ethnic origin is self-reported.) There was also an increase in the "no-response" option among post-baccalaureate

students, increasing to 17.8% (up from 15.5% in Fall 1998 and 16.4% in Fall 1999). If this increase in students declining to select an ethnic origin category continues, it could have implications for the longitudinal tracking of ethnicity trends at Cal Poly and in some federal reporting requirements. IP&A will continue to monitor the trend and provide updates.

Of the total enrolled students at Cal Poly 45% are female and 55% are male. At the undergraduate level, 44% of the students are female and 56% are male, and at the post-baccalaureate level, 56% of enrolled students are female and 44% are male.

NEW STUDENTS

New undergraduate student numbers were targeted at 3,926 for Fall 2000. Actual enrollment numbers show 3,111 new freshmen, 755 new transfer students and 106 new transitory students for a total of 3,972 new undergraduate students. Over 1,500 early decision applications were received, 568 students were "selected," and 434 (76%) enrolled.

New transfer students enrollment for Fall include 80 new lower-division transfers and 675 upper-division transfers. At the post-baccalaureate level, there are 341 new students for fall (the target was set at 349). The projection for all continuing students was 12,753 and 12,563 students actually enrolled.

CLASS SCHEDULE UPDATE

In Fall 2000 the university offered 3,408 total sections (not including Independent Study), an increase of 183 sections from Fall 1999. The university filled 84% of lecture and laboratory capacity (based on expected enrollment set by academic departments during the scheduling phases).

To continue moving forward with technology in the classroom, 10 additional lecture rooms were equipped as Smart Rooms over the summer and were ready for use the first day of Fall Quarter. This now brings our totals to 6 multimedia classrooms and 13 Smart Rooms.