

InfoBrief ENROLLMENT

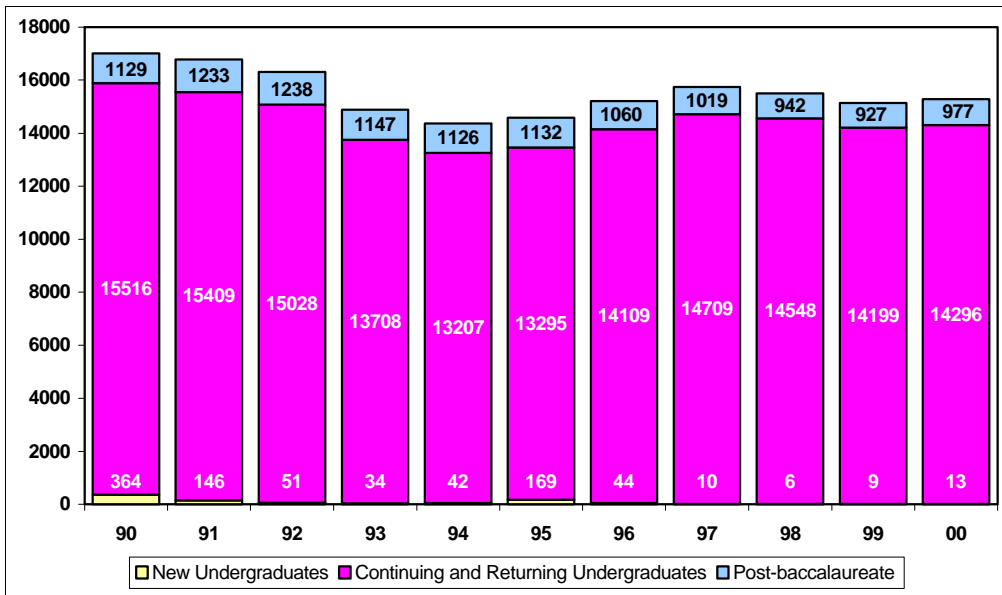
Cal Poly, San Luis Obispo

Institutional Planning and Analysis

Census Data ■ Spring 2000

May 4, 2000

SPRING HEADCOUNT ENROLLMENT — University Total



The total headcount enrollment for Spring 2000 is 15,286. This is an increase of 151 students over Spring 1999, but not as high as the enrollment target set for Spring 2000 (15,620). Spring 2000 FTES is 14,057, also about 2% below the target.

The final College Year FTES enrollment is 15,565, about 2% below the level budgeted by the Chancellor's Office. This shortfall resulted from two factors: Summer enrollment was both below target and lower than the previous summer; and fewer continuing students returned for Fall 1999 than projected.

HEADCOUNT ENROLLMENT BY COLLEGE

The modest Spring 2000 increase in student headcount was not distributed evenly among the colleges. Two colleges and the University Center for Teacher Education experienced enrollment increases; the other four colleges' enrollment decreased. The largest increase was in UCTE (up 9.4%), followed by the College of Liberal Arts

(up 9.2%) and the College of Architecture and Environmental Design (with an increase of 6.0%). Enrollment decreases were noted in the College of Science and Mathematics (down 4.4%); the College of Engineering (down 2.0%); the College of Business (down 1.5%); and the College of Agriculture (down 1.1%).

College and University Total Headcount Enrollment (Official Census, 5/4/00)

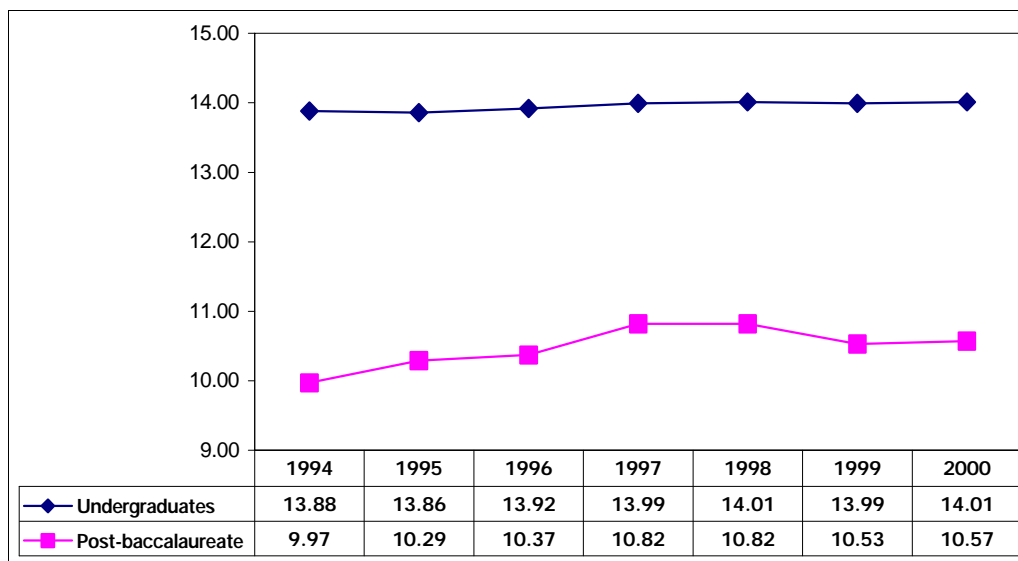
College	Undergraduate	Post-baccalaureate	Headcount Total
Agriculture	3,065	89	3,154
Arch & Environmental Design	1,412	54	1,466
Business	2,127	120	2,247
Engineering	3,449	139	3,588
Liberal Arts	2,673	78	2,751
Science & Mathematics	1,469	92	1,561
UCTE	n/a	371	371
Other	114	34	148
University Total	14,309	977	15,286

FULL-TIME EQUIVALENT STUDENTS, AVERAGE UNITS AND FULL-TIME STATUS

Full-Time Equivalent Students (FTES) is a theoretical normal workload equal to 15 units per student per term. It assumes that a student will complete a 186 quarter unit baccalaureate program in 12 quarters or 4 years at 15 units per term. Actual FTES for Spring 2000 is 14,057. This is an increase of about one percent from Spring 1999.

The average units met target at 13.79 (total undergraduate and post-baccalaureate). This was an increase from Spring 1999 (13.78) and a decrease compared to Winter 2000 (14.00).

Average Undergraduate and Post-baccalaureate Units



Undergraduate students in the College of Architecture and Environmental Design displayed the highest average unit load at 14.41, followed by the College of Agriculture (14.25); the College of Engineering (14.14); the College of Liberal Arts (13.87); the College of Business (13.83); and the College of Science and Mathematics (13.69).

There was a slight decrease in the proportion of undergraduate students enrolled full-time (12 or more units) in Spring 2000, with 90.3% in the full-time category compared with 91.8% in Winter 2000 and 89.9% in Spring 1999.

UNIVERSITY STUDENT DIVERSITY

Cal Poly Spring 2000 enrollment by ethnic origin shows that 58.6% of the undergraduates identified themselves as white, 27.6% as non-white and 0.9% as international students. Post-baccalaureate students are 62.2% white, 18.8% non-white and 3.1% international students.

The number of enrolled undergraduate students choosing "no response" increased from 7.6% in Spring 1999 to 13.0% in Spring 2000 (information on student ethnic origin is self-reported). There was also an increase in the

"no-response" option among post-baccalaureate students, up from 15.6% in Spring 1999 to 15.9% in Spring 2000. We are continuing to monitor the trend of students declining to select an ethnic origin category as it could have implications for the longitudinal tracking of ethnicity trends at Cal Poly and in some federal reporting requirements.

Of the total enrolled students at Cal Poly 45.1% are female and 54.9% are male. At the undergraduate level, 44.3% of the students are female and 55.7% are male, and at the post-baccalaureate level, 57.7% of enrolled students are female and 42.3% are male.

NEW STUDENTS

Of the 150 undergraduate applications processed for Spring 2000, 15 students were selected. Thirteen students actually enrolled. 14,296 returning and continuing undergraduate students also enrolled.

At the post-baccalaureate level, Cal Poly processed 155 applications and selected 107 students. 73 new post-baccalaureates and 904 returning and continuing students registered for Spring 2000.

CLASS SCHEDULE UPDATE

The university offered 3,084 total sections (not including Independent Study sections) in Spring 2000. This was 129 sections more than Spring 1999.

The university once again participated in the London Study Program, offering 17 sections in Spring 2000. 96 students from different majors attended classes taught by 6 faculty from the College of Liberal Arts.