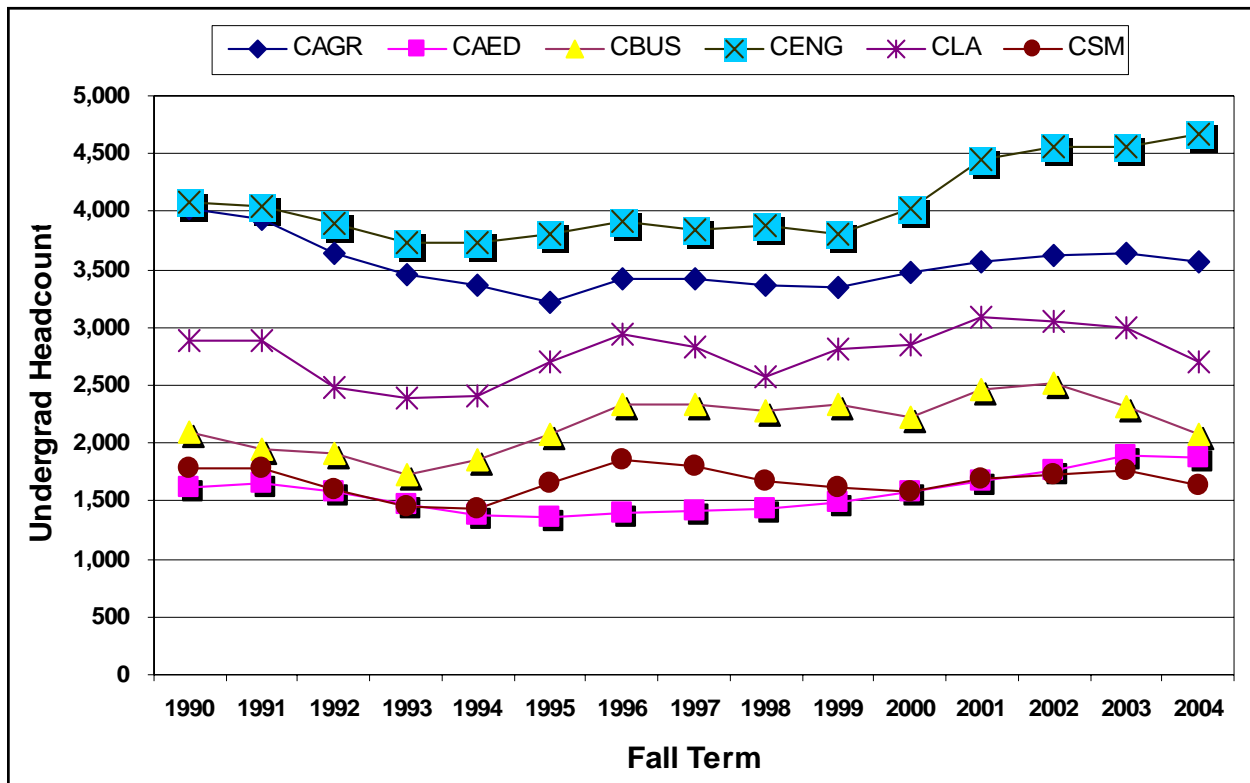


**Fall 2004 College Enrollment Summary (Headcount)  
2003-2004 Degrees by College**

<b>College of Agriculture</b>			
<b>Fall 2004 Enrollment</b>			
Undergraduate	3,567	Post-baccalaureate	137
<b>Degrees Awarded 2003-2004</b>			
Bachelor's Degrees	650	Master's Degrees	34
<b>College of Architecture and Environmental Design</b>			
<b>Fall 2004 Enrollment</b>			
Undergraduate	1,878	Post-baccalaureate	54
<b>Degrees Awarded 2003-2004</b>			
Bachelor's Degrees	279	Master's Degrees	33
<b>College of Business</b>			
<b>Fall 2004 Enrollment</b>			
Undergraduate	2,077	Post-baccalaureate	80
<b>Degrees Awarded 2003-2004</b>			
Bachelor's Degrees	963	Master's Degrees	118
<b>College of Engineering</b>			
<b>Fall 2004 Enrollment</b>			
Undergraduate	4,678	Post-baccalaureate	266
<b>Degrees Awarded 2003-2004</b>			
Bachelor's Degrees	713	Master's Degrees	123
<b>College of Liberal Arts</b>			
<b>Fall 2004 Enrollment</b>			
Undergraduate	2,708	Post-baccalaureate	88
<b>Degrees Awarded 2003-2004</b>			
Bachelor's Degrees	942	Master's Degrees	18
<b>College of Science and Mathematics</b>			
<b>Fall 2004 Enrollment</b>			
Undergraduate	1,631	Post-baccalaureate	70
<b>Degrees Awarded 2003-2004</b>			
Bachelor's Degrees	326	Master's Degrees	35
<b>University Center for Teacher Education</b>			
<b>Fall 2004 Enrollment</b>		Post-baccalaureate	228
<b>Degrees Awarded 2003-2004</b>			
Master's Degrees	47	Credentials Recommended	294

Trends in Undergraduate Enrollment by College



Undergraduate Enrollment by Headcount and Percentage  
Fall 1990 and Fall 2004

College	1990	% Fall 1990	2004	% Fall 2004
Agriculture	4,031	24.4	3,567	21.4
Architecture & Environmental Design	1,622	9.8	1,878	11.3
Business	2,094	12.7	2,077	12.5
Engineering	4,086	24.7	4,678	28.1
Liberal Arts	2,895	17.5	2,708	16.3
Science & Mathematics	1,776	10.7	1,631	9.8
Other	26	0.2	97	0.6
<b>Undergraduate Total</b>	<b>16,530</b>	<b>100.0</b>	<b>16,636</b>	<b>100.0</b>

Source: Institutional Planning & Analysis' Quarterly Enrollment Report.

**College of Agriculture**

Applied, Selected and Enrolled — Fall 1990 and 1997 through 2004

**Total Undergraduates Applied, Selected and Enrolled Fall 1990 & Fall 1997 through Fall 2004**

Fall Quarter Census	1990	1997	1998	1999	2000	2001	2002	2003	2004
1. Applications	1,638	1,735	1,872	1,768	1,820	1,975	1,986	2,152	2,558
2. Selected	1,318	1,198	1,129	1,317	1,487	1,503	1,419	1,420	1,467
3. Enrolled	791	743	696	770	855	782	758	794	795
4. % 2 of 1	80.5	69.0	60.3	74.5	81.7	76.1	71.4	66.0	57.3
5. % 3 of 2	60.0	62.0	61.6	58.5	57.5	52.0	53.4	55.9	54.2

**Freshmen Applied, Selected and Enrolled Fall 1990 and Fall 1997 through Fall 2004**

Fall Quarter Census	1990	1997	1998	1999	2000	2001	2002	2003	2004
1. Freshmen Applications	1,193	1,224	1,354	1,313	1,376	1,527	1,596	1,733	2,029
2. Selected	929	825	839	996	1,177	1,193	1,140	1,135	1,149
3. Enrolled	525	470	507	575	686	616	608	616	581
4. % 2 of 1	77.9	67.4	62.0	75.9	85.5	78.1	71.4	65.5	56.6
5. % 3 of 2	56.5	57.0	60.4	57.7	58.3	51.6	53.3	54.3	50.6

**Transfers Applied, Selected and Enrolled Fall 1990 and Fall 1997 through Fall 2004**

Fall Quarter Census	1990	1997	1998	1999	2000	2001	2002	2003	2004
1. Transfer Applications	445	511	518	455	444	448	390	419	529
2. Selected	389	373	290	321	310	310	279	285	318
3. Enrolled	260	269	189	195	169	166	150	178	214
4. % 2 of 1	87.4	73.0	56.0	70.5	69.8	69.2	71.5	68.0	60.1
5. % 3 of 2	66.8	72.1	65.2	60.7	54.5	53.5	53.8	62.5	67.3

**Post-baccalaureates Applied, Selected and Enrolled Fall 1990 and Fall 1997 through Fall 2004**

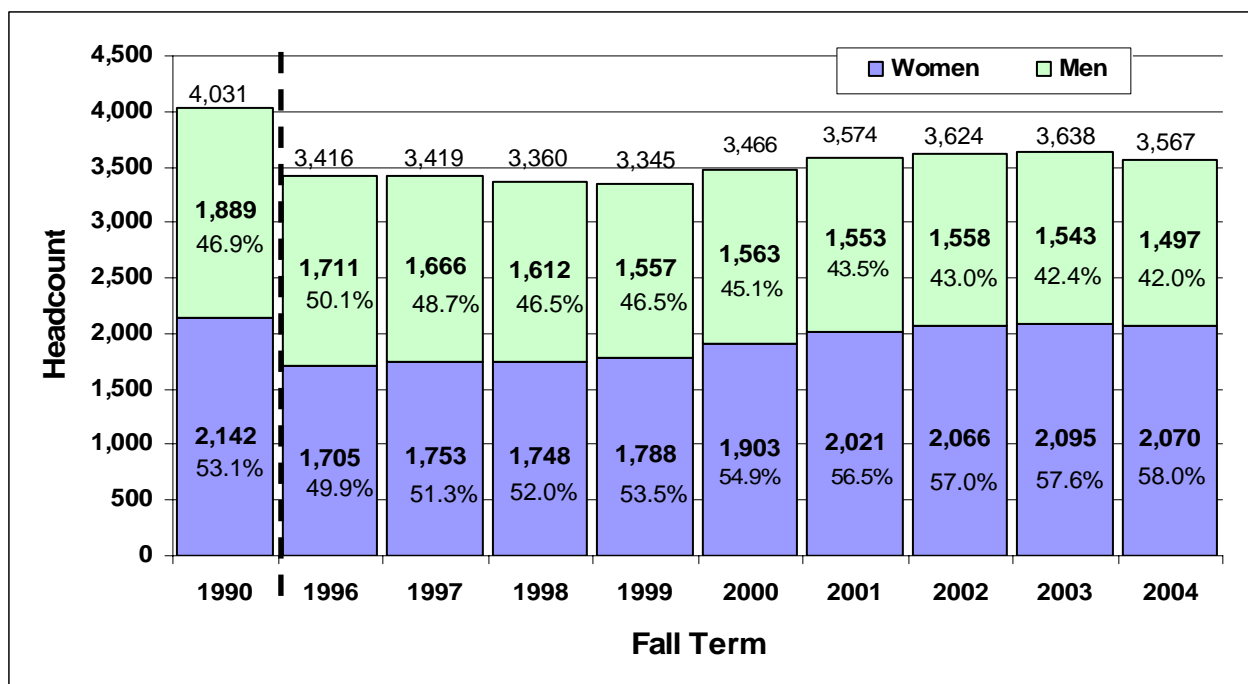
Fall Quarter Census	1990	1997	1998	1999	2000	2001	2002	2003	2004
1. Post-bacc Applications	30	49	55	63	75	79	90	105	108
2. Selected	30	32	42	42	56	53	61	76	76
3. Enrolled	15	27	22	26	34	32	45	47	45
4. % 2 of 1	100.0	65.3	76.4	66.7	74.7	67.1	67.8	72.4	70.4
5. % 3 of 2	50.0	84.4	52.4	61.9	60.7	60.4	73.7	61.8	59.2

Notes: Students seeking second Bachelors are processed with the Undergraduates for Admission purposes. Therefore, undergraduate application, selected, and enrollment numbers have been adjusted to include second baccalaureates. New enrolled students include those who participated in the Summer Institute program, as well as those accommodated for Fall but choosing to begin in the Summer.

Source: Institutional Planning & Analysis' Quarterly Application Report, Fall Quarter 1990 to 2004, Tables 1,2,3 and 4, Quarterly Internal Report on Enrollment, Fall 1990, Table 4A, and ODIN Quarterly Enrollment Report data, Fall 1996 to 2004.

**College of Agriculture**

Undergraduate Enrollment by Gender — Fall 1990 and Fall 1996 through Fall 2004



Undergraduate Enrollment by Ethnic Origin — Fall 1990 and Fall 2004

Ethnic Origin	Fall 1990	% Fall 1990	Fall 2004	% Fall 2004
African American/Black	34	0.8	25	0.7
Asian	129	3.2	181	5.1
Mexican Descent	152	3.8	187	5.2
Native American	44	1.1	48	1.3
Other Hispanic	77	1.9	97	2.7
Other	78	1.9	123	3.4
White	3,373	83.7	2,609	73.1
No Response	144	3.6	290	8.1
International Students	n/a	n/a	7	0.2
<b>Totals</b>	<b>4,031</b>	<b>100.0</b>	<b>3,567</b>	<b>100.0</b>

Notes: Students are not required to report their ethnic origin unless they wish to do so. The Other category is comprised of students whose ethnic origin does not fit into a specific category. The No Response category is comprised of students not indicating their ethnic origin. Due to the small numbers sometimes involved in certain categories, for Fact Book purposes, some categories are collapsed (Filipino and Pacific Islander are included in the Asian category). \*Groups with 5 or fewer members are not reported due to privacy concerns.

Source: Institutional Planning & Analysis' Quarterly Enrollment Report.

**College of Agriculture**

## Average Fall Quarter Student Unit Load — Fall 1997 through Fall 2004

	1997	1998	1999	2000	2001	2002	2003	2004
Undergraduates	14.27	14.34	14.29	14.24	14.38	14.45	14.44	14.54
Post-baccalaureates	11.80	11.11	11.60	11.41	10.91	11.78	11.11	11.03

## Enrollment by Major — Fall 1990 and Fall 1997 through Fall 2004

<b>Undergraduate</b>	<b>1990</b>	<b>1997</b>	<b>1998</b>	<b>1999</b>	<b>2000</b>	<b>2001</b>	<b>2002</b>	<b>2003</b>	<b>2004</b>
Agricultural Engr Tech	70	7	2	0	0	0	0	0	0
Agricultural Business	927	816	859	870	974	975	1,027	1,010	990
Agricultural Science	144	144	142	140	180	199	216	218	194
Animal Science	536	455	428	446	519	541	578	602	583
Agricultural Systems Mgmt	0	70	88	89	90	104	96	92	102
Bioresource & Agricultural Engineering	130	142	134	134	115	128	117	116	108
Crop Science	143	163	150	152	129	121	101	72	59
Dairy Science	108	125	108	105	108	106	114	112	109
Earth Sciences	0	0	0	0	7	37	62	77	78
Environmental Horticultural Science	336	262	255	249	208	204	182	160	157
Environmental Management & Protection	0	0	0	0	0	0	0	3	40
Food Science	147	116	118	121	119	113	110	96	83
Forestry and Natural Resources	89	324	274	246	235	249	226	226	208
Fruit Science	49	56	63	81	91	78	76	74	76
Home Economics	368	1	0	0	0	0	0	0	0
Natural Resources Management	291	0	0	0	0	0	0	0	0
Nutrition	366	357	373	375	348	366	350	411	429
Nutritional Science	0	0	0	0	0	1	2	0	0
Poultry Industry	33	0	0	0	0	0	0	0	0
Plant Protection Science	0	35	26	18	15	17	9	5	6
Recreation Administration	194	198	202	204	229	251	290	309	286
Soil Science	100	152	138	115	106	85	68	54	45
Wine and Viticulture	0	0	0	0	0	0	0	0	14
<b>Total Undergraduates</b>	<b>4,031</b>	<b>3,423</b>	<b>3,360</b>	<b>3,345</b>	<b>3,473</b>	<b>3,575</b>	<b>3,624</b>	<b>3,638</b>	<b>3,567</b>
<b>Post-baccalaureate</b>	<b>1990</b>	<b>1997</b>	<b>1998</b>	<b>1999</b>	<b>2000</b>	<b>2001</b>	<b>2002</b>	<b>2003</b>	<b>2004</b>
Agriculture	75	93	80	74	85	87	102	116	119
Agricultural Business	0	0	0	0	0	0	0	0	7
Forestry Sciences	0	0	0	0	0	0	0	9	7
2nd Baccalaureates	34	21	14	12	10	14	12	6	4
<b>Total Post-baccalaureates</b>	<b>109</b>	<b>114</b>	<b>94</b>	<b>86</b>	<b>95</b>	<b>101</b>	<b>114</b>	<b>131</b>	<b>137</b>

Source: Institutional Planning & Analysis, ODIN Quarterly Enrollment Report, Tables 1 and 10.

**College of Architecture and Environmental Design**

Applied, Selected and Enrolled — Fall 1990 and 1997 through 2004

**Total Undergraduates Applied, Selected and Enrolled Fall 1990 and Fall 1997 through Fall 2004**

Fall Quarter Census	1990	1997	1998	1999	2000	2001	2002	2003	2004
1. Applications	2,108	1,531	1,603	1,666	1,786	1,972	2,072	2,236	2,541
2. Selected	499	598	621	716	803	921	865	768	700
3. Enrolled	297	352	352	398	424	410	427	434	374
4. % 2 of 1	23.7	39.1	38.7	42.9	45.0	46.7	41.7	34.3	27.5
5. % 3 of 2	59.5	58.9	56.7	55.6	52.8	44.5	49.4	56.5	53.4

**Freshmen Applied, Selected and Enrolled Fall 1990 and Fall 1997 through Fall 2004**

Fall Quarter Census	1990	1997	1998	1999	2000	2001	2002	2003	2004
1. Freshmen Applications	1,425	1,085	1,157	1,284	1,362	1,534	1,623	1,788	2,041
2. Selected	306	437	449	537	662	722	682	605	551
3. Enrolled	161	239	239	282	333	305	306	316	266
4. % 2 of 1	21.5	40.3	38.8	41.8	48.6	47.1	42.0	33.8	27.0
5. % 3 of 2	52.6	54.7	53.2	52.5	50.3	42.2	44.8	52.2	48.3

**Transfers Applied, Selected and Enrolled Fall 1990 and Fall 1997 through Fall 2004**

Fall Quarter Census	1990	1997	1998	1999	2000	2001	2002	2003	2004
1. Transfer Applications	683	446	446	382	424	438	449	448	500
2. Selected	193	161	172	179	141	199	183	163	149
3. Enrolled	126	112	113	116	91	105	121	118	108
4. % 2 of 1	28.3	36.1	38.6	46.9	33.3	45.4	40.8	36.4	29.8
5. % 3 of 2	65.3	69.6	65.7	64.8	64.5	52.8	44.8	72.4	72.5

**Post-baccalaureates Applied, Selected and Enrolled Fall 1990 and Fall 1997 through Fall 2004**

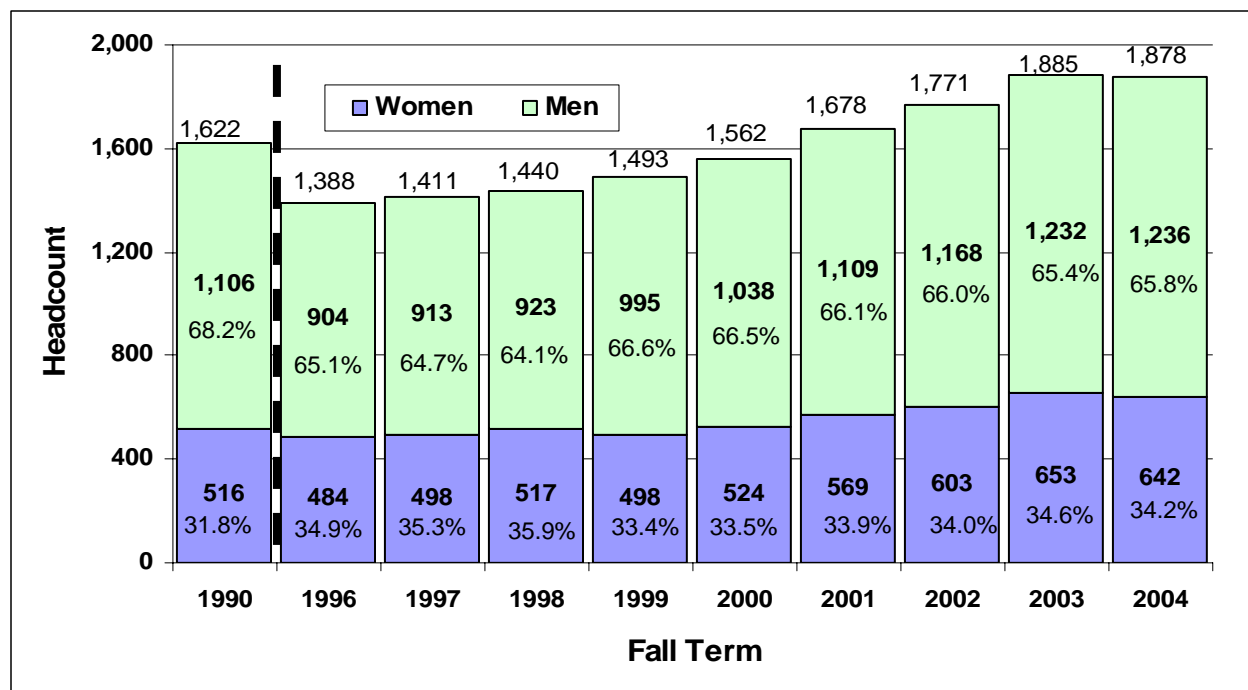
Fall Quarter Census	1990	1997	1998	1999	2000	2001	2002	2003	2004
1. Post-bacc Applications	45	51	65	42	47	51	80	77	78
2. Selected	45	30	48	30	34	39	51	55	53
3. Enrolled	18	12	25	20	16	25	30	22	17
4. % 2 of 1	100.0	58.8	73.8	71.4	72.3	76.5	63.8	71.4	67.9
5. % 3 of 2	40.0	40.0	52.1	66.7	47.1	64.1	58.8	40.0	32.1

Notes: Students seeking second Bachelors are processed with the Undergraduates for Admission purposes. Therefore, undergraduate application, selected, and enrollment numbers have been adjusted to include second baccalaureates. New enrolled students include those who participated in the Summer Institute program, as well as those accommodated for Fall but choosing to begin in the Summer.

Source: Institutional Planning & Analysis' Quarterly Application Report, Fall Quarter 1990 to 2004, Tables 1,2,3 and 4, Quarterly Internal Report on Enrollment, Fall 1990, Table 4A, and ODIN Quarterly Enrollment Report data, Fall 1996 to 2004.

**College of Architecture and Environmental Design**

Undergraduate Enrollment by Gender — Fall 1990 and Fall 1996 through Fall 2004



Undergraduate Enrollment by Ethnic Origin — Fall 1990 and Fall 2004

Ethnic Origin	Fall 1990	% Fall 1990	Fall 2004	% Fall 2004
African American/Black	51	3.1	16	0.9
Asian	233	14.4	226	12.0
Mexican Descent	214	13.2	195	10.4
Native American	16	1.0	10	0.5
Other Hispanic	92	5.7	67	3.6
Other	30	1.8	72	3.8
White	929	57.3	1,089	58.0
No Response	57	3.5	187	10.0
International Students	n/a	n/a	16	0.9
<b>Totals</b>	<b>1,622</b>	<b>100.0</b>	<b>1,878</b>	<b>100.0</b>

Notes: Students are not required to report their ethnic origin unless they wish to do so. The Other category is comprised of students whose ethnic origin does not fit into a specific category. The No Response category is comprised of students not indicating their ethnic origin. Due to the small numbers sometimes involved in certain categories, for Fact Book purposes, some categories are collapsed (Filipino and Pacific Islander are included in the Asian category). \*Groups with 5 or fewer members are not reported due to privacy concerns.

Source: Institutional Planning & Analysis' Quarterly Enrollment Report.

**College of Architecture and Environmental Design**

Average Fall Quarter Student Unit Load — Fall 1997 through Fall 2004

	1997	1998	1999	2000	2001	2002	2003	2004
Undergraduates	14.27	14.34	14.29	14.31	14.43	14.61	14.55	14.54
Post-baccalaureates	10.61	10.53	11.60	12.09	11.86	11.56	11.92	11.44

Enrollment by Major — Fall 1990 and Fall 1997 through Fall 2004

<b>Undergraduate</b>	<b>1990</b>	<b>1997</b>	<b>1998</b>	<b>1999</b>	<b>2000</b>	<b>2001</b>	<b>2002</b>	<b>2003</b>	<b>2004</b>
Architectural Engineering	221	238	221	212	243	298	327	351	340
Architecture	762	633	653	677	707	742	765	822	798
City & Regional Planning	187	144	143	140	144	145	156	147	148
Construction Management	245	231	242	268	276	275	293	322	366
Landscape Architecture (BS)	207	20	6	0	0	0	0	1	0
Landscape Architecture (BLA)	0	148	175	196	205	218	230	242	226
<b>Total Undergraduates</b>	<b>1,622</b>	<b>1,414</b>	<b>1,440</b>	<b>1,493</b>	<b>1,575</b>	<b>1,678</b>	<b>1,771</b>	<b>1,885</b>	<b>1,878</b>

<b>Post-baccalaureate</b>	<b>1990</b>	<b>1997</b>	<b>1998</b>	<b>1999</b>	<b>2000</b>	<b>2001</b>	<b>2002</b>	<b>2003</b>	<b>2004</b>
Architecture	28	42	32	23	16	15	18	8	16
City & Regional Planning	19	22	27	29	30	35	42	50	36
2nd Baccalaureates	15	3	5	7	1	6	6	5	2
<b>Total Post-baccalaureates</b>	<b>62</b>	<b>67</b>	<b>64</b>	<b>59</b>	<b>47</b>	<b>56</b>	<b>66</b>	<b>63</b>	<b>54</b>

Source: Institutional Planning &amp; Analysis, ODIN Quarterly Enrollment Report, Tables 1 and 10.

**College of Business**

Applied, Selected and Enrolled — Fall 1990 and 1997 through 2004

<b>Total Undergraduates Applied, Selected and Enrolled Fall 1990 and Fall 1997 through Fall 2004</b>									
<b>Fall Quarter Census</b>	<b>1990</b>	<b>1997</b>	<b>1998</b>	<b>1999</b>	<b>2000</b>	<b>2001</b>	<b>2002</b>	<b>2003</b>	<b>2004</b>
1. Applications	2,737	2,837	3,080	3,318	3,455	4,038	4,209	4,225	4,708
2. Selected	389	872	799	1,013	1,094	1,484	1,113	1,259	1,264
3. Enrolled	203	400	317	416	460	557	364	450	440
4. % 2 of 1	14.2	30.7	25.9	30.5	31.7	36.8	26.4	29.8	26.8
5. % 3 of 2	52.2	45.9	39.7	41.1	42.0	37.5	32.7	35.7	34.8

<b>Freshmen Applied, Selected and Enrolled Fall 1990 and Fall 1997 through Fall 2004</b>									
<b>Fall Quarter Census</b>	<b>1990</b>	<b>1997</b>	<b>1998</b>	<b>1999</b>	<b>2000</b>	<b>2001</b>	<b>2002</b>	<b>2003</b>	<b>2004</b>
1. Freshmen Applications	1,976	2,142	2,359	2,575	2,688	3,188	3,361	3,447	3,870
2. Selected	261	710	661	850	869	1,103	1,003	1,093	1,130
3. Enrolled	114	289	235	319	331	349	304	333	328
4. % 2 of 1	13.2	33.1	28.0	33.0	32.3	34.6	29.8	31.7	29.2
5. % 3 of 2	43.7	40.7	35.6	37.5	38.1	31.6	30.3	30.5	29.0

<b>Transfers Applied, Selected and Enrolled Fall 1990 and Fall 1997 through Fall 2004</b>									
<b>Fall Quarter Census</b>	<b>1990</b>	<b>1997</b>	<b>1998</b>	<b>1999</b>	<b>2000</b>	<b>2001</b>	<b>2002</b>	<b>2003</b>	<b>2004</b>
1. Transfer Applications	761	695	721	743	767	850	848	778	838
2. Selected	128	162	138	163	225	381	110	166	134
3. Enrolled	89	109	82	97	129	208	60	117	112
4. % 2 of 1	16.8	23.3	19.1	21.9	29.3	44.8	13.0	21.3	16.0
5. % 3 of 2	69.5	67.3	59.4	59.5	57.3	54.6	54.5	70.5	83.6

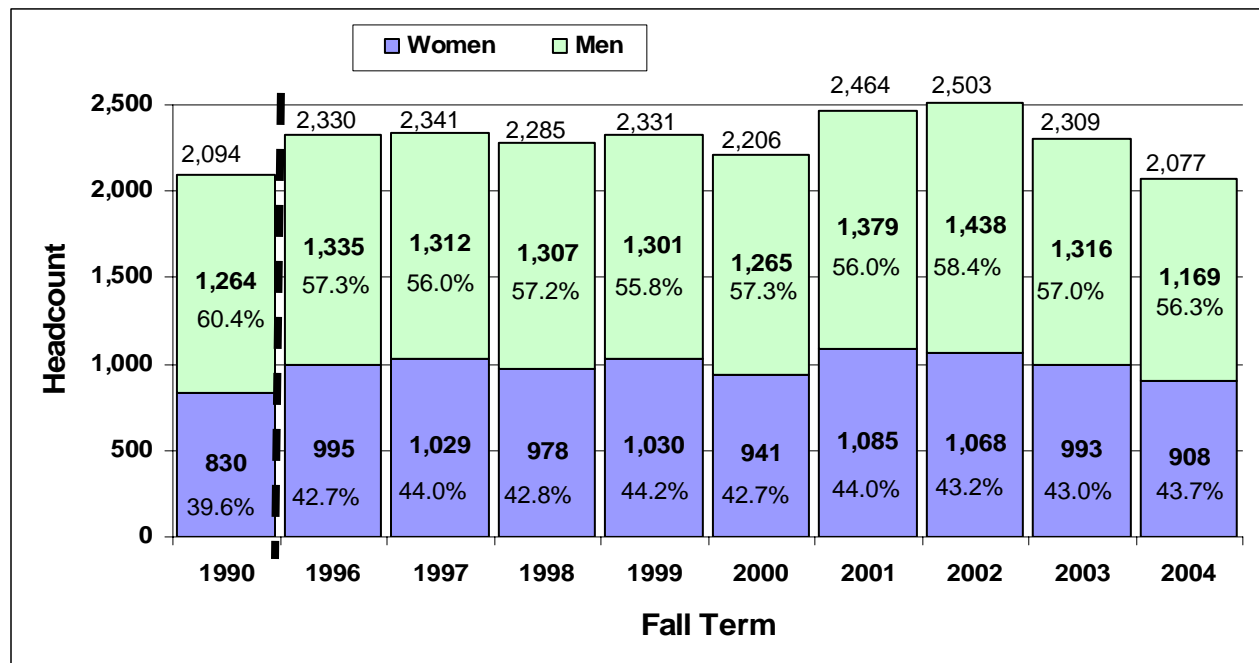
<b>Post-baccalaureates Applied, Selected and Enrolled Fall 1990 and Fall 1997 through Fall 2004</b>									
<b>Fall Quarter Census</b>	<b>1990</b>	<b>1997</b>	<b>1998</b>	<b>1999</b>	<b>2000</b>	<b>2001</b>	<b>2002</b>	<b>2003</b>	<b>2004</b>
1. Post-bacc Applications	162	108	121	131	112	123	113	110	127
2. Selected	159	61	67	81	64	90	65	75	63
3. Enrolled	60	48	44	46	40	65	41	50	50
4. % 2 of 1	98.1	56.5	55.4	61.8	57.1	73.2	57.5	68.2	49.6
5. % 3 of 2	37.7	78.7	65.7	56.8	62.5	72.2	63.1	66.7	79.4

Notes: Students seeking second Bachelors are processed with the Undergraduates for Admission purposes. Therefore, undergraduate application, selected, and enrollment numbers have been adjusted to include second baccalaureates. New enrolled students include those who participated in the Summer Institute program, as well as those accommodated for Fall but choosing to begin in the Summer.

Source: Institutional Planning & Analysis' Quarterly Application Report, Fall Quarter 1990 to 2004, Tables 1,2,3 and 4, Quarterly Internal Report on Enrollment, Fall 1990, Table 4A, and ODIN Quarterly Enrollment Report data, Fall 1996 to 2004.

**College of Business**

Undergraduate Enrollment by Gender — Fall 1990 and Fall 1996 through Fall 2004



Undergraduate Enrollment by Ethnic Origin — Fall 1990 and Fall 2004

Ethnic Origin	Fall 1990	% Fall 1990	Fall 2004	% Fall 2004
African American/Black	43	2.1	24	1.2
Asian	217	10.3	242	11.7
Mexican Descent	200	9.6	124	6.0
Native American	18	0.9	10	0.5
Other Hispanic	83	3.9	50	2.4
Other	36	1.7	66	3.2
White	1,436	68.6	1,395	67.2
No Response	61	2.9	162	7.8
International	n/a	n/a	4	0.2
<b>Totals</b>	<b>2,094</b>	<b>100.0</b>	<b>2,077</b>	<b>100.0</b>

Notes: Students are not required to report their ethnic origin unless they wish to do so. The Other category is comprised of students whose ethnic origin does not fit into a specific category. The No Response category is comprised of students not indicating their ethnic origin. Due to the small numbers sometimes involved in certain categories, for Fact Book purposes, some categories are collapsed (Filipino and Pacific Islander are included in the Asian category). \*Groups with 5 or fewer members are not reported due to privacy concerns.

Source: Institutional Planning & Analysis' Quarterly Enrollment Report.

**College of Business**

## Average Fall Quarter Student Unit Load — Fall 1997 through Fall 2004

	1997	1998	1999	2000	2001	2002	2003	2004
Undergraduates	14.24	14.27	14.16	14.06	14.02	14.09	14.27	14.42
Post-baccalaureates	13.35	14.43	14.32	14.39	14.35	14.45	14.45	14.20

## Enrollment by Major — Fall 1990 and Fall 1997 through Fall 2004

<b>Undergraduate</b>	<b>1990</b>	<b>1997</b>	<b>1998</b>	<b>1999</b>	<b>2000</b>	<b>2001</b>	<b>2002</b>	<b>2003</b>	<b>2004</b>
Business Administration	1,613	1,934	1,813	1,821	1,699	1,927	2,010	1,911	1,758
Economics	150	175	181	200	205	212	188	154	131
Industrial Technology	331	232	291	310	322	325	327	244	188
<b>Total Undergraduates</b>	<b>2,094</b>	<b>2,341</b>	<b>2,285</b>	<b>2,331</b>	<b>2,226</b>	<b>2,464</b>	<b>2,525</b>	<b>2,309</b>	<b>2,077</b>

<b>Post-baccalaureate</b>	<b>1990</b>	<b>1997</b>	<b>1998</b>	<b>1999</b>	<b>2000</b>	<b>2001</b>	<b>2002</b>	<b>2003</b>	<b>2004</b>
Business Administration (MBA)	145	79	74	81	81	95	83	61	60
Industrial & Technical Studies (MS)	8	26	17	25	37	20	29	28	19
2nd Baccalaureates	0	0	4	0	0	3	3	2	1
<b>Total Post-baccalaureates</b>	<b>153</b>	<b>105</b>	<b>95</b>	<b>106</b>	<b>118</b>	<b>115</b>	<b>115</b>	<b>91</b>	<b>80</b>

*Note:* Engineering Management (MBA/EMP) is a joint program with the College of Business. Total enrollment in this program is included in the College of Engineering figures.

*Source:* Institutional Planning & Analysis, ODIN Quarterly Enrollment Report, Tables 1 and 10.

**College of Engineering**

Applied, Selected and Enrolled — Fall 1990 and 1997 through 2004

**Total Undergraduates Applied, Selected and Enrolled Fall 1990 and Fall 1997 through Fall 2004**

Fall Quarter Census	1990	1997	1998	1999	2000	2001	2002	2003	2004
1. Applications	3,527	4,213	4,789	5,373	5,899	6,819	6,554	6,148	6,252
2. Selected	1,614	1,943	2,122	2,250	2,671	3,080	2,779	2,800	2,996
3. Enrolled	795	847	917	906	1,126	1,114	957	1,051	1,202
4. % 2 of 1	45.8	46.1	44.3	41.9	45.3	45.2	42.4	45.5	47.9
5. % 3 of 2	49.3	43.6	43.2	40.3	42.2	36.2	34.4	37.5	40.1

**Freshmen Applied, Selected and Enrolled Fall 1990 and Fall 1997 through Fall 2004**

Fall Quarter Census	1990	1997	1998	1999	2000	2001	2002	2003	2004
1. Freshmen Applications	2,699	3,406	4,031	4,565	5,043	5,933	5,668	5,332	5,419
2. Selected	1,197	1,732	1,964	2,025	2,512	2,705	2,474	2,526	2,804
3. Enrolled	556	729	830	783	1,037	908	786	884	1,078
4. % 2 of 1	44.3	50.9	48.7	44.4	49.8	45.6	43.7	47.4	51.7
5. % 3 of 2	46.4	42.1	42.3	38.7	41.3	33.6	31.8	35.0	38.4

**Transfers Applied, Selected and Enrolled Fall 1990 and Fall 1997 through Fall 2004**

Fall Quarter Census	1990	1997	1998	1999	2000	2001	2002	2003	2004
1. Transfer Applications	828	807	758	808	856	886	886	816	833
2. Selected	417	211	158	225	159	375	305	274	192
3. Enrolled	234	117	87	123	89	206	171	167	124
4. % 2 of 1	50.4	26.1	20.8	27.8	18.6	42.3	34.4	33.6	23.0
5. % 3 of 2	56.1	55.5	55.1	54.7	56.0	54.9	56.1	60.9	64.6

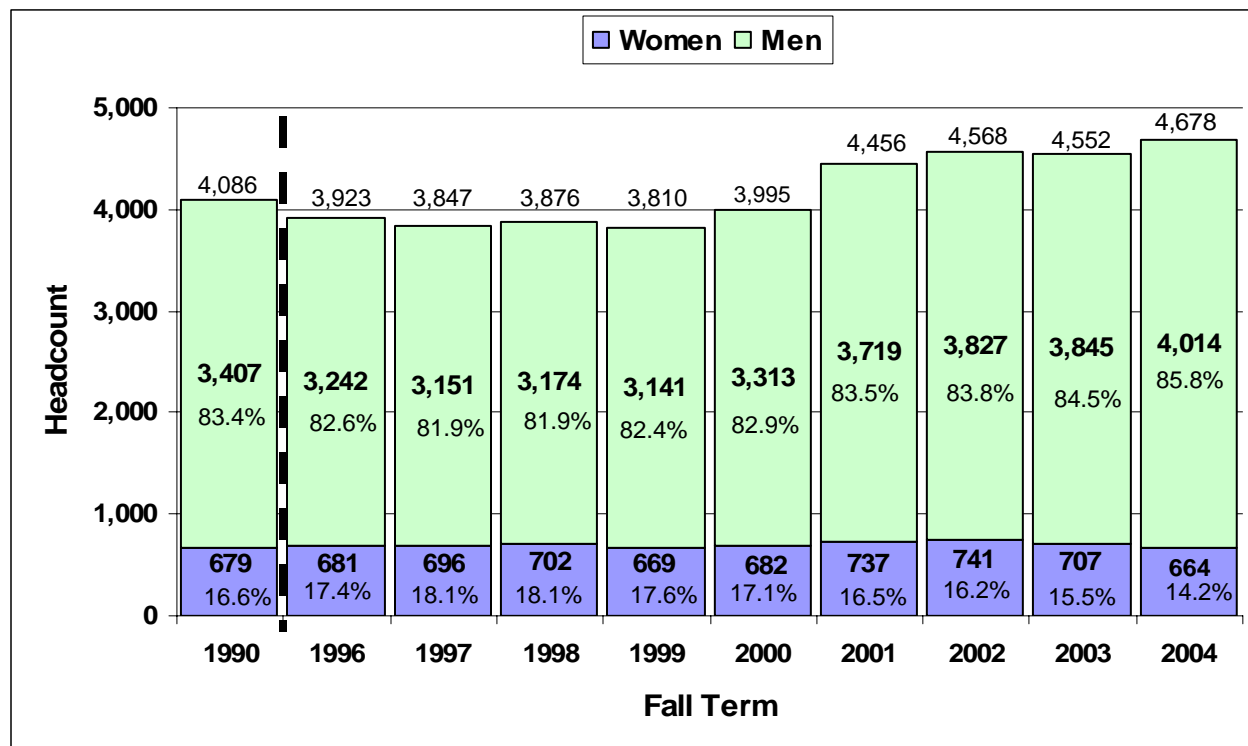
**Post-baccalaureates Applied, Selected and Enrolled Fall 1990 and Fall 1997 through Fall 2004**

Fall Quarter Census	1990	1997	1998	1999	2000	2001	2002	2003	2004
1. Post-bacc Applications	165	160	156	190	173	135	153	254	248
2. Selected	159	78	69	75	92	80	78	114	142
3. Enrolled	62	33	33	44	53	57	70	89	113
4. % 2 of 1	96.4	48.8	44.2	39.5	53.2	59.3	51.0	44.9	57.3
5. % 3 of 2	39.0	42.3	47.8	58.7	57.6	71.3	90.0	78.1	79.6

Notes: Students seeking second Bachelors are processed with the Undergraduates for Admission purposes. Therefore, undergraduate application, selected, and enrollment numbers have been adjusted to include second baccalaureates. New enrolled students include those who participated in the Summer Institute program, as well as those accommodated for Fall but choosing to begin in the Summer.

Source: Institutional Planning & Analysis' Quarterly Application Report, Fall Quarter 1990 to 2004, Tables 1,2,3 and 4, Quarterly Internal Report on Enrollment, Fall 1990, Table 4A, and ODIN Quarterly Enrollment Report data, Fall 1996 to 2004.

College of Engineering



Undergraduate Enrollment by Ethnic Origin — Fall 1990 and Fall 2004

Ethnic Origin	Fall 1990	% Fall 1990	Fall 2004	% Fall 2004
African American/Black	89	2.2	43	0.9
Asian	891	21.8	932	19.9
Mexican Descent	360	8.8	323	6.9
Native American	23	0.6	29	0.6
Other Hispanic	141	3.5	143	3.1
Other	81	1.9	122	2.6
White	2,325	56.9	2,640	56.4
No Response	176	4.3	406	8.7
International Students	n/a	n/a	40	0.9
<b>Totals</b>	<b>4,086</b>	<b>100.0</b>	<b>4,678</b>	<b>100.0</b>

Notes: Students are not required to report their ethnic origin unless they wish to do so. The Other category is comprised of students whose ethnic origin does not fit into a specific category. The No Response category is comprised of students not indicating their ethnic origin. Due to the small numbers sometimes involved in certain categories, for Fact Book purposes, some categories are collapsed (Filipino and Pacific Islander are included in the Asian category). \*Groups with 5 or fewer members are not reported due to privacy concerns.

Source: Institutional Planning & Analysis' Quarterly Enrollment Report.

**College of Engineering**

## Average Fall Quarter Student Unit Load — Fall 1997 through Fall 2004

	1997	1998	1999	2000	2001	2002	2003	2004
Undergraduates	14.01	14.19	14.23	14.15	14.17	14.18	14.30	14.39
Post-baccalaureates	10.89	10.77	10.81	9.73	9.83	11.69	10.92	10.20

## Enrollment by Major — Fall 1990 and Fall 1997 through Fall 2004

<b>Undergraduate</b>	<b>1990</b>	<b>1997</b>	<b>1998</b>	<b>1999</b>	<b>2000</b>	<b>2001</b>	<b>2002</b>	<b>2003</b>	<b>2004</b>
Aerospace Engineering	364	224	257	260	338	358	362	370	395
Civil Engineering	471	472	484	514	567	633	643	657	719
Computer Engineering	167	402	410	396	416	504	507	509	459
Computer Science	470	473	475	479	474	550	611	557	510
Electrical Engineering	386	617	631	599	640	703	734	722	769
Electronic Engineering	527	22	0	0	0	0	0	0	0
Environmental Engineering	122	248	212	172	125	109	108	114	114
General/Engineering Science	44	82	120	130	169	211	210	189	192
Engineering Technology	375	0	0	0	0	0	0	0	0
Industrial Engineering	212	252	232	211	230	211	211	199	216
Manufacturing Engineering	0	60	69	69	56	66	72	76	73
Materials Engineering	120	141	164	148	129	147	130	127	115
Mechanical Engineering	828	854	822	832	890	964	980	1,023	1,069
Software Engineering	0	0	0	0	0	0	0	9	47
<b>Total Undergraduates</b>	<b>4,086</b>	<b>3,847</b>	<b>3,876</b>	<b>3,810</b>	<b>4,034</b>	<b>4,456</b>	<b>4,568</b>	<b>4,552</b>	<b>4,678</b>

<b>Post-baccalaureate</b>	<b>1990</b>	<b>1997</b>	<b>1998</b>	<b>1999</b>	<b>2000</b>	<b>2001</b>	<b>2002</b>	<b>2003</b>	<b>2004</b>
Aerospace Engineering (MS)	25	4	4	14	17	12	19	13	44
Civil & Environmental Engineering (MS)	10	10	14	0	14	12	28	16	19
Computer Science (MS)	81	38	36	35	50	55	63	66	40
Electronic Engineering (MS)	29	16	18	15	21	25	33	52	58
Engineering (MS)	25	27	31	30	19	29	32	37	62
Engineering Management (MBA/MS)	9	16	14	9	13	9	5	10	14
Industrial Engineering (MS)	0	0	0	0	0	0	0	13	11
Mechanical Engineering (MS)	0	0	0	0	0	12	21	25	15
Transportation Management (MCRP/MS)	0	0	0	0	0	0	0	0	0
2nd Baccalaureates	37	10	16	12	19	12	3	15	3
<b>Total Post-baccalaureates</b>	<b>216</b>	<b>121</b>	<b>133</b>	<b>127</b>	<b>153</b>	<b>166</b>	<b>214</b>	<b>247</b>	<b>266</b>

Note: Engineering Management (MBA/EMP) is a joint program with the College of Business. Transportation Management (MCRP/MS) is a joint program with the College of Architecture and Environmental Design. Total enrollment in these programs are included in the College of Engineering figures.

Source: Institutional Planning & Analysis, ODIN Quarterly Enrollment Report, Tables 1 and 10.

**College of Liberal Arts**

Applied, Selected and Enrolled — Fall 1990 and 1997 through 2004

<b>Total Undergraduates Applied, Selected and Enrolled Fall 1990 and Fall 1997 through Fall 2004</b>									
<b>Fall Quarter Census</b>	<b>1990</b>	<b>1997</b>	<b>1998</b>	<b>1999</b>	<b>2000</b>	<b>2001</b>	<b>2002</b>	<b>2003</b>	<b>2004</b>
1. Applications	3,648	4,194	4,236	4,629	5,127	5,669	6,188	6,662	6,881
2. Selected	632	961	1,063	1,656	1,511	2,043	1,381	1,549	1,817
3. Enrolled	301	402	435	762	614	724	497	555	591
4. % 2 of 1	17.3	22.9	25.1	35.8	29.5	36.0	22.3	23.3	26.4
5. % 3 of 2	47.6	41.8	40.9	46.0	40.6	35.4	36.0	35.8	32.5

<b>Freshmen Applied, Selected and Enrolled Fall 1990 and Fall 1997 through Fall 2004</b>									
<b>Fall Quarter Census</b>	<b>1990</b>	<b>1997</b>	<b>1998</b>	<b>1999</b>	<b>2000</b>	<b>2001</b>	<b>2002</b>	<b>2003</b>	<b>2004</b>
1. Freshmen Applications	2,515	3,022	3,125	3,463	3,906	4,349	4,866	5,440	5,524
2. Selected	350	709	812	1,255	1,099	1,583	1,078	1,172	1,381
3. Enrolled	129	229	293	522	401	474	316	345	362
4. % 2 of 1	13.9	23.5	26.0	36.2	28.1	36.4	22.2	21.5	25.0
5. % 3 of 2	36.9	32.3	36.1	41.6	36.5	29.9	29.3	29.4	26.2

<b>Transfers Applied, Selected and Enrolled Fall 1990 and Fall 1996 through Fall 2004</b>									
<b>Fall Quarter Census</b>	<b>1990</b>	<b>1997</b>	<b>1998</b>	<b>1999</b>	<b>2000</b>	<b>2001</b>	<b>2002</b>	<b>2003</b>	<b>2004</b>
1. Transfer Applications	1,133	1,172	1,111	1,166	1,221	1,320	1,322	1,222	1,357
2. Selected	282	252	251	401	412	460	303	377	436
3. Enrolled	172	171	142	240	213	250	181	210	229
4. % 2 of 1	24.9	21.5	22.6	34.4	33.7	34.8	22.9	30.9	32.1
5. % 3 of 2	61.0	67.9	56.6	59.9	51.7	54.3	59.7	55.7	52.5

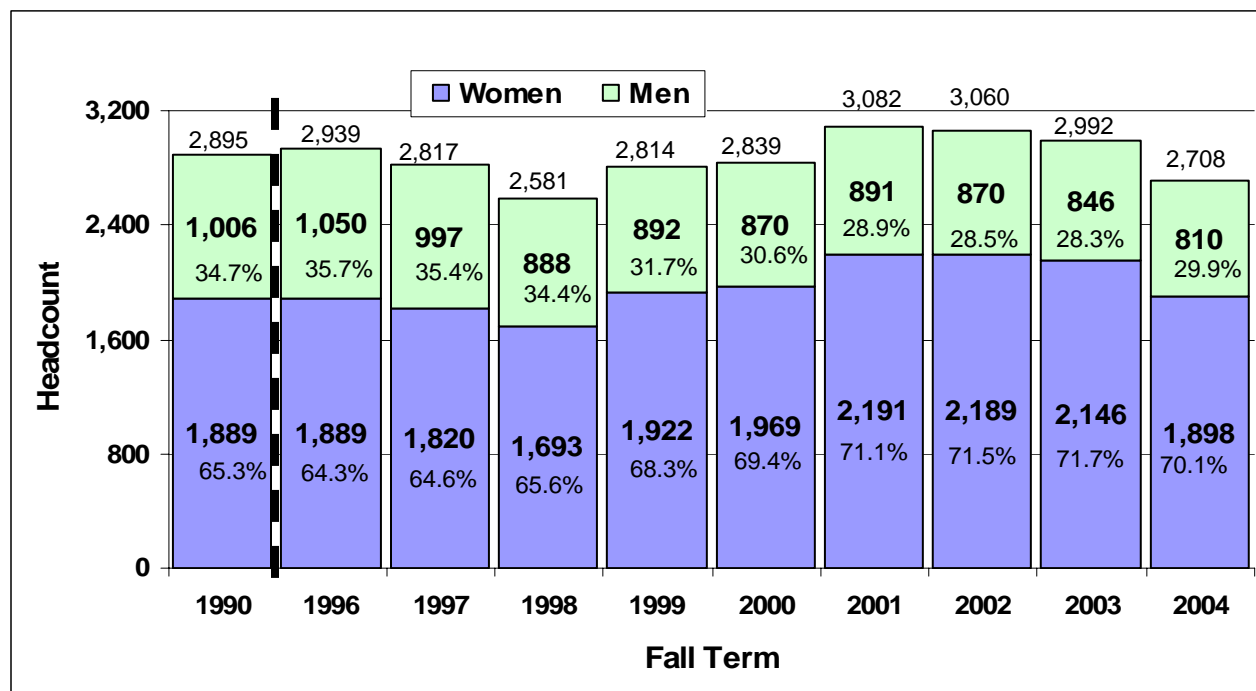
<b>Post-baccalaureates Applied, Selected and Enrolled Fall 1990 and Fall 1997 through Fall 2004</b>									
<b>Fall Quarter Census</b>	<b>1990</b>	<b>1997</b>	<b>1998</b>	<b>1999</b>	<b>2000</b>	<b>2001</b>	<b>2002</b>	<b>2003</b>	<b>2004</b>
1. Post-bacc Applications	76	76	91	60	82	75	90	105	129
2. Selected	75	40	48	28	37	43	38	39	54
3. Enrolled	28	29	34	19	27	28	23	25	29
4. % 2 of 1	98.7	52.6	52.7	46.7	45.1	57.3	42.2	37.1	41.9
5. % 3 of 2	37.3	72.5	70.8	67.9	73.0	65.1	60.5	64.1	53.7

Notes: Students seeking second Bachelors are processed with the Undergraduates for Admission purposes. Therefore, undergraduate application, selected, and enrollment numbers have been adjusted to include second baccalaureates. New enrolled students include those who participated in the Summer Institute program, as well as those accommodated for Fall but choosing to begin in the Summer.

Source: Institutional Planning & Analysis' Quarterly Application Report, Fall Quarter 1990 to 2004, Tables 1,2,3 and 4, Quarterly Internal Report on Enrollment, Fall 1990, Table 4A, and ODIN Quarterly Enrollment Report data, Fall 1996 to 2004.

**College of Liberal Arts**

**Undergraduate Enrollment by Gender — Fall 1990 and Fall 1996 through Fall 2004**



**Undergraduate Enrollment by Ethnic Origin — Fall 1990 and Fall 2004**

Ethnic Origin	Fall 1990	% Fall 1990	Fall 2004	% Fall 2004
African American/Black	64	2.2	40	1.5
Asian	154	5.3	175	6.5
Mexican Descent	242	8.4	210	7.8
Native American	33	1.1	17	0.6
Other Hispanic	100	3.5	77	2.8
Other	48	1.7	83	3.1
White	2,142	74.0	1,810	66.8
No Response	112	3.8	291	10.7
International Students	n/a	n/a	5	0.2
<b>Totals</b>	<b>2,895</b>	<b>100.0</b>	<b>2,708</b>	<b>100.0</b>

Notes: Students are not required to report their ethnic origin unless they wish to do so. The Other category is comprised of students whose ethnic origin does not fit into a specific category. The No Response category is comprised of students not indicating their ethnic origin. Due to the small numbers sometimes involved in certain categories, for Fact Book purposes, some categories are collapsed (Filipino and Pacific Islander are included in the Asian category). \*Groups with 5 or fewer members are not reported due to privacy concerns.

Source: Institutional Planning & Analysis' Quarterly Enrollment Report.

**College of Liberal Arts**

## Average Fall Quarter Student Unit Load — Fall 1997 through Fall 2004

	1997	1998	1999	2000	2001	2002	2003	2004
Undergraduates	13.92	13.97	14.01	14.00	14.03	14.21	14.17	14.35
Post-baccalaureates	10.18	10.12	10.06	9.57	9.27	9.51	10.32	9.86

## Enrollment by Major — Fall 1990 and Fall 1997 through Fall 2004

<b>Undergraduate</b>	<b>1990</b>	<b>1997</b>	<b>1998</b>	<b>1999</b>	<b>2000</b>	<b>2001</b>	<b>2002</b>	<b>2003</b>	<b>2004</b>
Art & Design	206	213	202	206	195	215	215	229	206
Child/Family Development	45	0	1	0	0	0	0	0	0
Child Development	396	154	126	162	142	143	168	141	106
English	275	262	234	258	266	297	281	265	254
Graphic Communication	336	286	262	269	267	295	284	298	265
History	162	166	155	184	195	201	190	204	188
Human Development	0	0	0	0	0	0	0	1	1
Journalism	264	217	189	212	222	224	252	214	210
Liberal Studies	387	397	381	447	443	430	408	403	352
Modern Languages & Literature	0	0	8	18	37	48	52	55	51
Music	0	64	61	80	79	69	70	67	63
Philosophy	0	73	58	52	47	43	47	48	53
Political Science	309	233	215	245	228	243	258	235	195
Psychology	0	296	279	268	287	358	345	313	266
Social Sciences	330	283	250	240	251	267	253	251	248
Speech Communication	184	182	159	150	155	200	180	221	202
Theatre Arts	0	0	1	23	35	49	57	48	48
<b>Total Undergraduates</b>	<b>2,894</b>	<b>2,826</b>	<b>2,581</b>	<b>2,814</b>	<b>2,849</b>	<b>3,082</b>	<b>3,060</b>	<b>2,992</b>	<b>2,708</b>

<b>Post-baccalaureate</b>	<b>1990</b>	<b>1997</b>	<b>1998</b>	<b>1999</b>	<b>2000</b>	<b>2001</b>	<b>2002</b>	<b>2003</b>	<b>2004</b>
Counseling (MS)	46	0	0	0	0	0	0	0	0
English (MA)	57	61	49	39	38	47	41	42	37
Psychology (MS)	0	49	53	40	45	37	38	39	37
Public Policy (MPP)	0	0	0	0	0	0	0	0	12
2nd Baccalaureates	6	7	10	8	7	6	4	3	2
<b>Total Post-baccalaureates</b>	<b>109</b>	<b>117</b>	<b>112</b>	<b>87</b>	<b>90</b>	<b>90</b>	<b>83</b>	<b>84</b>	<b>88</b>

Source: Institutional Planning & Analysis, ODIN Quarterly Enrollment Report, Tables 1 and 10.

**College of Science and Mathematics**

Applied, Selected and Enrolled — Fall 1990 and 1997 through 2004

<b>Total Undergraduates Applied, Selected and Enrolled Fall 1990 and Fall 1997 through Fall 2004</b>									
<b>Fall Quarter Census</b>	<b>1990</b>	<b>1997</b>	<b>1998</b>	<b>1999</b>	<b>2000</b>	<b>2001</b>	<b>2002</b>	<b>2003</b>	<b>2004</b>
1. Applications	1,861	2,480	2,372	2,387	2,585	2,609	2,990	3,467	4,118
2. Selected	722	883	810	960	1,304	1,642	1,389	1,588	1,636
3. Enrolled	290	283	250	320	387	446	325	410	341
4. % 2 of 1	38.8	35.6	34.1	40.2	50.4	62.9	46.5	45.8	39.7
5. % 3 of 2	40.2	32.0	30.9	33.3	29.7	27.2	23.4	25.8	20.8

<b>Freshmen Applied, Selected and Enrolled Fall 1990 and Fall 1997 through Fall 2004</b>									
<b>Fall Quarter Census</b>	<b>1990</b>	<b>1997</b>	<b>1998</b>	<b>1999</b>	<b>2000</b>	<b>2001</b>	<b>2002</b>	<b>2003</b>	<b>2004</b>
1. Freshmen Applications	1,497	2,019	1,989	1,974	2,225	2,224	2,620	3,084	3,664
2. Selected	472	734	704	810	1,172	1,454	1,281	1,458	1,513
3. Enrolled	164	204	201	235	323	351	281	339	282
4. % 2 of 1	31.5	36.4	35.4	41.0	52.7	65.4	48.9	47.3	41.3
5. % 3 of 2	34.7	27.8	28.6	29.0	27.6	24.1	22.0	23.3	18.6

<b>Transfers Applied, Selected and Enrolled Fall 1990 and Fall 1997 through Fall 2004</b>									
<b>Fall Quarter Census</b>	<b>1990</b>	<b>1997</b>	<b>1998</b>	<b>1999</b>	<b>2000</b>	<b>2001</b>	<b>2002</b>	<b>2003</b>	<b>2004</b>
1. Transfer Applications	364	461	383	413	360	385	370	383	454
2. Selected	250	149	106	150	132	188	108	130	123
3. Enrolled	125	79	49	85	64	95	44	71	59
4. % 2 of 1	68.7	32.3	27.7	36.3	36.7	48.8	29.2	33.9	27.1
5. % 3 of 2	50.0	53.0	46.2	56.7	48.5	50.5	41.0	54.6	48.0

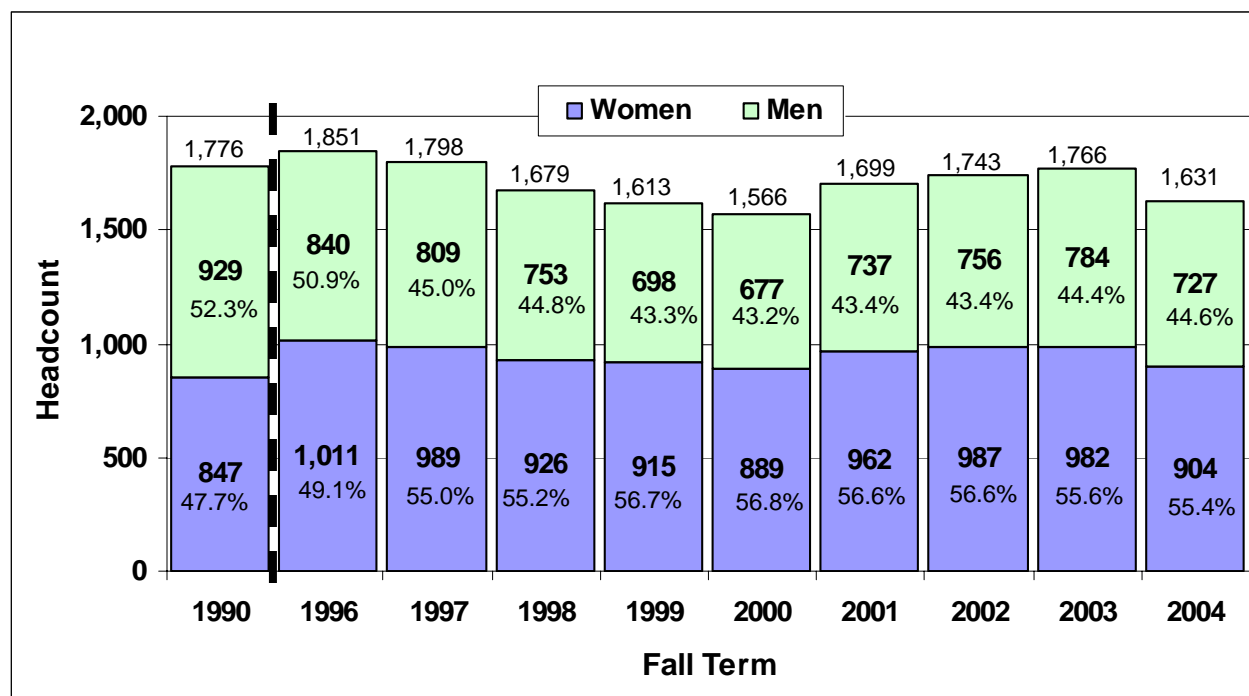
<b>Post-baccalaureates Applied, Selected and Enrolled Fall 1990 and Fall 1997 through Fall 2004</b>									
<b>Fall Quarter Census</b>	<b>1990</b>	<b>1997</b>	<b>1998</b>	<b>1999</b>	<b>2000</b>	<b>2001</b>	<b>2002</b>	<b>2003</b>	<b>2004</b>
1. Post-bacc Applications	49	94	89	71	79	51	74	85	82
2. Selected	47	40	62	50	50	34	48	47	46
3. Enrolled	24	31	39	36	36	17	27	27	23
4. % 2 of 1	95.9	42.6	69.7	70.4	63.3	66.7	64.9	55.3	56.1
5. % 3 of 2	51.1	77.5	62.9	72.0	72.0	50.0	56.3	57.4	50.0

Notes: Students seeking second Bachelors are processed with the Undergraduates for Admission purposes. Therefore, undergraduate application, selected, and enrollment numbers have been adjusted to include second baccalaureates. New enrolled students include those who participated in the Summer Institute program, as well as those accommodated for Fall but choosing to begin in the Summer.

Source: Institutional Planning & Analysis' Quarterly Application Report, Fall Quarter 1990 to 2004, Tables 1,2,3 and 4, Quarterly Internal Report on Enrollment, Fall 1990, Table 4A, and ODIN Quarterly Enrollment Report data, Fall 1996 to 2004.

**College of Science and Mathematics**

Undergraduate Enrollment by Gender — Fall 1990 and Fall 1996 through Fall 2004



Undergraduate Enrollment by Ethnic Origin — Fall 1990 and Fall 2004

Ethnic Origin	Fall 1990	% Fall 1990	Fall 2004	% Fall 2004
African American/Black	35	2.0	21	1.3
Asian	153	8.6	164	10.1
Mexican Descent	116	6.5	97	5.9
Native American	22	1.2	8	0.5
Other Hispanic	43	2.4	46	2.8
Other	40	2.3	52	3.2
White	1,292	72.8	1,093	67.0
No Response	75	4.2	145	8.9
International Students	n/a	n/a	5	0.3
<b>Totals</b>	<b>1,776</b>	<b>100.0</b>	<b>1,631</b>	<b>100.0</b>

Notes: Students are not required to report their ethnic origin unless they wish to do so. The Other category is comprised of students whose ethnic origin does not fit into a specific category. The No Response category is comprised of students not indicating their ethnic origin. Due to the small numbers sometimes involved in certain categories, for Fact Book purposes, some categories are collapsed (Filipino and Pacific Islander are included in the Asian category). \*Groups with 5 or fewer members are not reported due to privacy concerns.

Source: Institutional Planning & Analysis' Quarterly Enrollment Report.

**College of Science and Mathematics**

Average Fall Quarter Student Unit Load — Fall 1997 through Fall 2004

	1997	1998	1999	2000	2001	2002	2003	2004
Undergraduates	13.80	13.86	13.75	13.82	13.82	13.90	14.01	14.06
Post-baccalaureates	9.07	9.92	9.38	8.71	9.77	9.27	9.72	10.14

Enrollment by Major — Fall 1990 and Fall 1997 through Fall 2004

<b>Undergraduate</b>	<b>1990</b>	<b>1997</b>	<b>1998</b>	<b>1999</b>	<b>2000</b>	<b>2001</b>	<b>2002</b>	<b>2003</b>	<b>2004</b>
Biochemistry	190	223	208	198	183	184	146	173	156
Biological Sciences	511	506	459	438	410	473	478	476	474
Chemistry	94	90	84	66	59	77	87	101	104
Ecology & Systematic Biology	136	162	142	121	117	100	94	79	71
Kinesiology	332	388	363	362	347	382	431	412	344
Mathematics	266	185	171	181	194	224	241	226	199
Microbiology	76	120	130	119	106	84	77	83	89
Physical Science	26	20	21	13	11	13	10	11	16
Physics	114	84	78	89	109	116	130	149	125
Statistics	31	29	23	26	40	46	56	56	53
<b>Total Undergraduates</b>	<b>1,776</b>	<b>1,807</b>	<b>1,679</b>	<b>1,279</b>	<b>1,576</b>	<b>1,699</b>	<b>1,447</b>	<b>1,768</b>	<b>1,631</b>

<b>Post-baccalaureate</b>	<b>1990</b>	<b>1997</b>	<b>1998</b>	<b>1999</b>	<b>2000</b>	<b>2001</b>	<b>2002</b>	<b>2003</b>	<b>2004</b>
Biological Sciences (MS)	20	39	37	33	47	32	28	27	28
Kinesiology (MS)	30	30	43	41	31	27	33	32	26
Mathematics (MS)	23	12	13	15	16	11	15	9	14
Polymers and Coating Science (MS)	0	0	0	0	0	0	1	4	0
2nd Baccalaureates	10	2	2	4	3	11	10	7	2
<b>Total Post-baccalaureates</b>	<b>83</b>	<b>83</b>	<b>95</b>	<b>93</b>	<b>97</b>	<b>81</b>	<b>87</b>	<b>79</b>	<b>70</b>

Source: Institutional Planning &amp; Analysis, ODIN Quarterly Enrollment Report, Tables 1 and 10.

**College of Education**

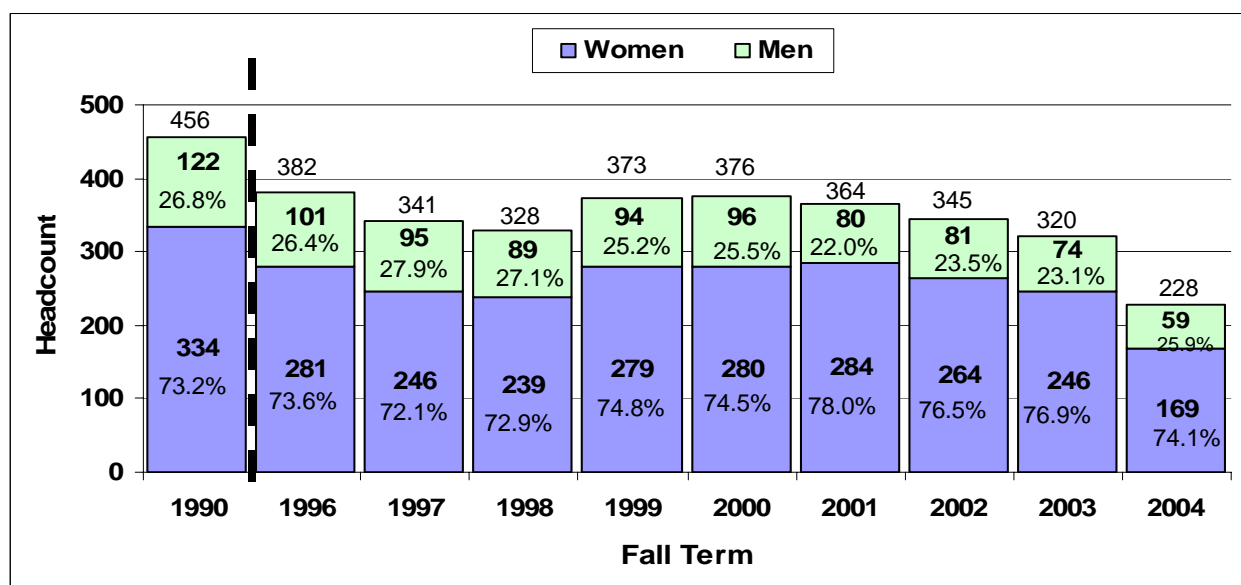
Applied, Selected and Enrolled — Fall 1990 and Fall 1997 through Fall 2004

**Post-baccalaureates Applied, Selected and Enrolled Fall 1990 and Fall 1997 through Fall 2004**

Fall Quarter Census	1990	1997	1998	1999	2000	2001	2002	2003	2004
1. Applications	154	228	255	274	283	254	293	255	249
2. Selected	153	134	174	194	181	153	172	145	129
3. Enrolled	98	101	123	124	122	101	112	102	102
4. % 2 of 1	99.4	58.8	68.2	70.8	64.0	60.2	58.7	56.9	51.8
5. % 3 of 2	64.1	75.4	48.2	63.9	67.4	66.0	65.1	70.3	79.1

Source: Institutional Planning & Analysis Quarterly Application Report, Fall Quarter 1990 to 2004, Tables 1 and 4, Quarterly Internal Report on Enrollment, Fall 1990, Table 4A, and ODIN QER data, Fall 1996 to 2004.

**Fall Enrollment by Gender — Fall 1990 and Fall 1996 through Fall 2004**



**Enrollment by Ethnic Origin — Fall 1990 and Fall 2004**

Ethnic Origin	Fall 1990	% Fall 1990	Fall 2004	% Fall 2004
Non-White	45	9.9	44	19.3
White	375	82.2	152	66.7
No Response	36	7.9	31	13.6
International Students	n/a	n/a	1	0.4
<b>Totals</b>	<b>456</b>	<b>100.0</b>	<b>228</b>	<b>100.0</b>

Notes: Students are not required to report their ethnic origin unless they wish to do so. The Other category is comprised of students whose ethnic origin does not fit into a specific category. The No Response category is comprised of students not indicating their ethnic origin. Due to the small numbers sometimes involved in certain categories, for Fact Book purposes, some categories are collapsed (Filipino and Pacific Islander are included in the Asian category). \*Groups with 5 or fewer members are not reported due to privacy concerns.