

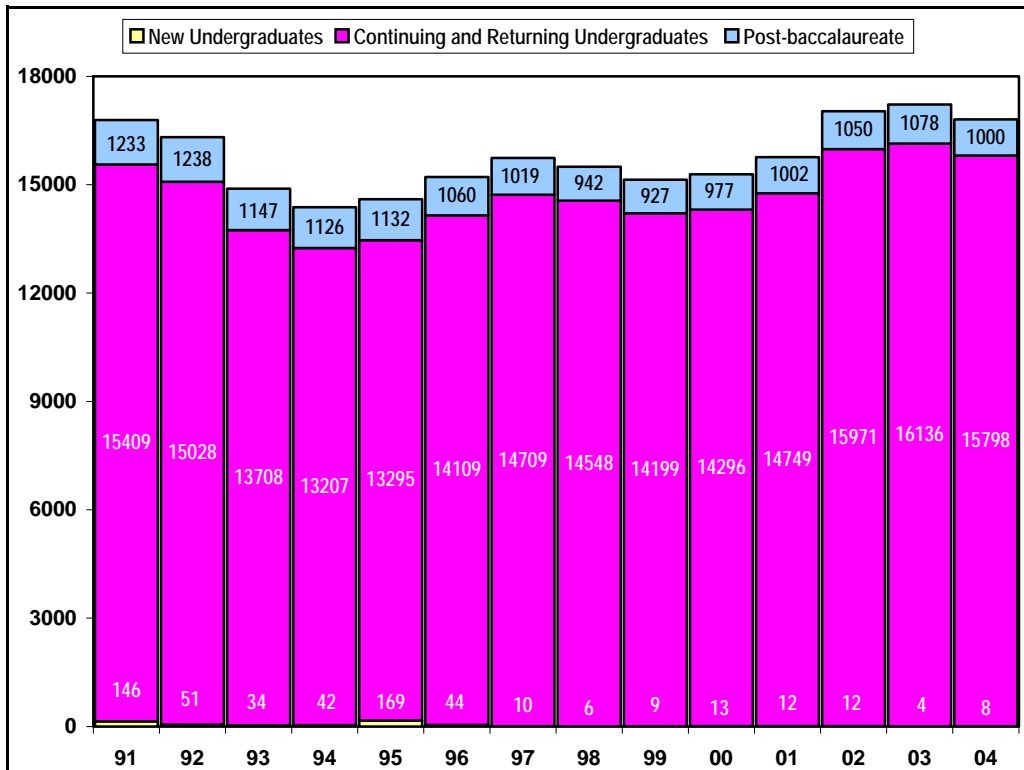
# Spring 2004 Census Enrollment

# INFO BRIEF

Cal Poly San Luis Obispo

May 7, 2004

## UNIVERSITY HEADCOUNT ENROLLMENT



The total headcount enrollment for Spring 2004 is 16,806. This is an decrease of 412 students from Spring 2003, and lower than both the original enrollment target set in March 2003 (16,905) and the projections revised after Fall and Winter census.

CY FTES for 2003-04 (17,170) was within 0.4% of our original campus-designated target of 17,100 set in March 2003. This final number is 1.6% higher than the Chancellor's Office's campus target, which was readjusted to 16,901 in December 2003, after Winter admissions were processed. FTES during the academic year were over target resulting from higher than projected course loads.

More target-related information can be found at [www.ipa.calpoly.edu/targets.html](http://www.ipa.calpoly.edu/targets.html)

## HEADCOUNT ENROLLMENT BY COLLEGE

While Cal Poly's total enrollment for Spring 2004 was lower than last year, decreases were not shared equally among the colleges. The largest enrollment decrease from Spring 2003 occurred in the University Center for Teacher Education (down 18.9%), followed by the College of Business (down 11.4%),

the College of Liberal Arts (down 6.1%), and the Colleges of Agriculture and Engineering (both down less than one percent). Enrollment increased in the College of Architecture and Environmental Design (up 7.3%) and the College of Science and Mathematics (up 0.8%).

### OFFICIAL College and University Total Headcount Enrollment (Spring Census, 5/7/04)

College	Undergraduate	Post-baccalaureate	Headcount Total
Agriculture	3,348	131	3,479
Arch & Environmental Design	1,813	62	1,875
Business	2,091	88	2,179
Engineering	4,128	253	4,381
Liberal Arts	2,697	75	2,772
Science & Mathematics	1,631	74	1,705
UCTE	n/a	292	292
Other	98	25	123
<b>Total University Enrollment</b>	<b>15,806</b>	<b>1,000</b>	<b>16,806</b>

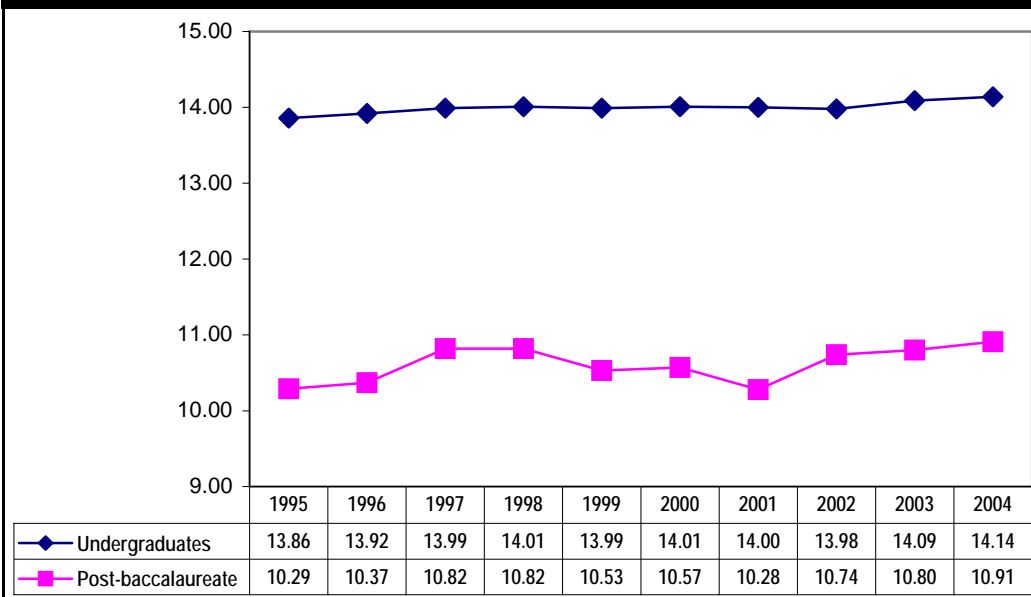
**FULL-TIME EQUIVALENT STUDENTS, AVERAGE UNITS AND FULL-TIME STATUS**

Full-Time Equivalent Students (FTES) is a theoretical normal workload equal to 15 units per student per term. It assumes that a student will complete a 180 quarter unit baccalaureate program in 12 quarters or 4 years at 15 units per term.

FTES was targeted for Spring 2004 at 15,525. Actual FTES is 15,631, 0.7% above the original target set in March 2003.

Over 92% of undergraduate students enrolled full-time (12 or more units) in Spring 2004. Following the typical enrollment pattern, this percentage is lower than for both Winter 2004 (94.8%) and Fall 2003 (95.2%).

**Average Undergraduate and Post-baccalaureate Units**



Spring 2004 saw yet another increase in the number of average units per student, up from 13.89 in Spring 2003 to 13.95 per student (total enrollment). Both undergraduate and post-baccalaureate average course loads continue a steady increase since 1990. Undergraduate students in the

College of Architecture and Environmental Design and the College of Agriculture displayed the highest average unit load at 14.34, followed by the College of Engineering (14.22); the College of Business (14.12); the College of Liberal Arts (13.96); and the College of Science and Mathematics (13.86).

**UNIVERSITY STUDENT DIVERSITY**

Of the total enrolled students at Cal Poly in Spring 2004, 44.3% are female and 55.7% are male. Among the colleges, the female/male ratio varies with more females than males in the University Center for Teacher Education (77.4% female), the College of Liberal Arts (70.6% female), the College of Agriculture (57.2% female), and the College of Science and Mathematics (55.6% female). Males outnumber females in the College of Engineering (84.5% male), College of Architecture and Environmental Design (65.6% male), and the College of Business (57.0% male).

Cal Poly Spring 2004 enrollment by ethnic origin shows that 63.1% of the undergraduates identified themselves as white and 25.6% as non-white, 0.9% are designated as international students, and 10.5% of undergraduates chose not to respond to the ethnic origin question (information on student ethnic origin is voluntary and self-reported).

Among post-baccalaureate students enrolled for Spring 2004, 59.3% are white, 22.7% are non-white, 1.7% are international students, and 16.3% did not respond.

**NEW STUDENTS**

Admissions for Spring term are typically very limited. Most new Cal Poly students are admitted for Summer or Fall. We processed 33 undergraduate applications for Spring 2004. Eleven students were selected, and census numbers indicate eight new undergraduate students actually enrolled. Also taking Spring 2004 courses were 15,774 returning and continuing undergraduates and 24 "other" new undergraduate students\* also enrolled.

post-baccalaureate students (including about 50 Liberal Studies undergraduates in the blended program who began their post-baccalaureate credential student teaching assignments this quarter), 921 returning and continuing students, and 8 "other" new post-baccalaureate students\* registered for Spring 2004 courses.

\* "Other" students include transitory/visiting students, non-degree seeking faculty and staff, and students applying for the Cuesta College Ag Tech program.

At the post-baccalaureate level, Cal Poly processed 175 applications and selected 114 students. One-hundred-twenty new