

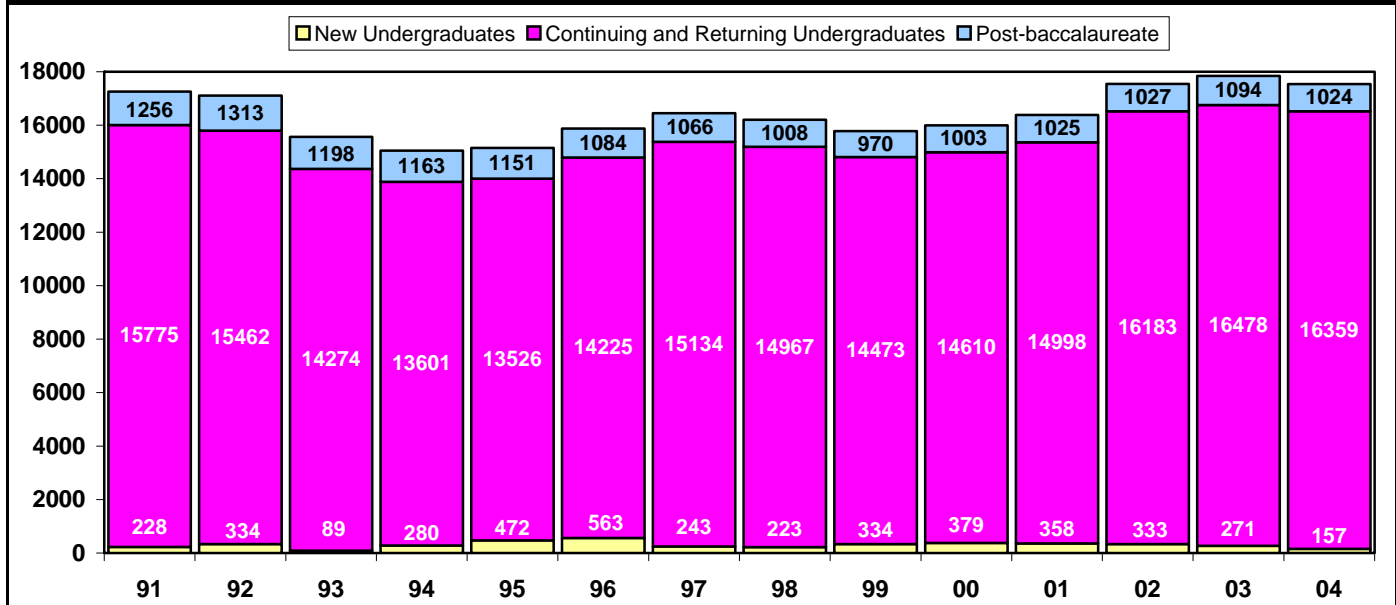
Winter 2004 Census Enrollment

INFO BRIEF

Cal Poly San Luis Obispo

February 13, 2004

TRENDS IN UNIVERSITY HEADCOUNT ENROLLMENT



The total headcount enrollment for Winter 2004 is 17,540. This is an decrease of about 300 students from Winter 2003 and very close to both the original enrollment target set last March (17,533), and the revised projection set after Fall census (17,535). Winter 2004 FTES is 16,677, well above

the original target (16,483) and the revised projection (16,484).

College Year enrollment is now projected to reach about 17,137 CY FTES, approximately 1.4% over the California State University Chancellor's Office assignment for Cal Poly.

HEADCOUNT ENROLLMENT BY COLLEGE

While we lowered the total enrollment from Winter 2003, not every college showed a decrease from last year. Enrollment in the University Center for Teacher Education decreased 14.0%, the College of Business was down 10.5%, and the College of Liberal Arts was down 5.1%. Enrollment increased in the

College of Architecture and Environmental Design (up 7.2%), followed by the College of Science and Mathematics (up 1.4%), the College of Engineering (up 0.4%), and the College of Agriculture (up 0.3%).

OFFICIAL College and University Total Headcount Enrollment (Winter Census, 2/13/04)

College	Undergraduate	Post-baccalaureate	Headcount Total
Agriculture	3,509	140	3,649
Arch & Environmental Design	1,851	65	1,916
Business	2,178	91	2,269
Engineering	4,350	243	4,593
Liberal Arts	2,841	78	2,919
Science & Mathematics	1,694	76	1,770
UCTE	n/a	306	306
Other	93	25	118
Total University Enrollment	16,516	1,024	17,540

FULL-TIME EQUIVALENT STUDENTS, AVERAGE UNITS AND FULL-TIME STATUS

Full-Time Equivalent Students (FTES) is a theoretical normal workload equal to 15 units per student per term. It assumes that a student will complete a 180 quarter unit baccalaureate program in 12 quarters or 4 years at 15 units per term.

FTES was targeted for Winter 2004 at 16,483. Actual FTES is 16,677, about 1.2% over target. Winter 2004 FTES was 2.9% lower than Winter 2003.

Winter 2004 saw yet another increase in the number of average units per student, up from 14.18 in Winter 2003 to 14.26 per student (total enrollment). Looking at trends since 1990, this Winter has set

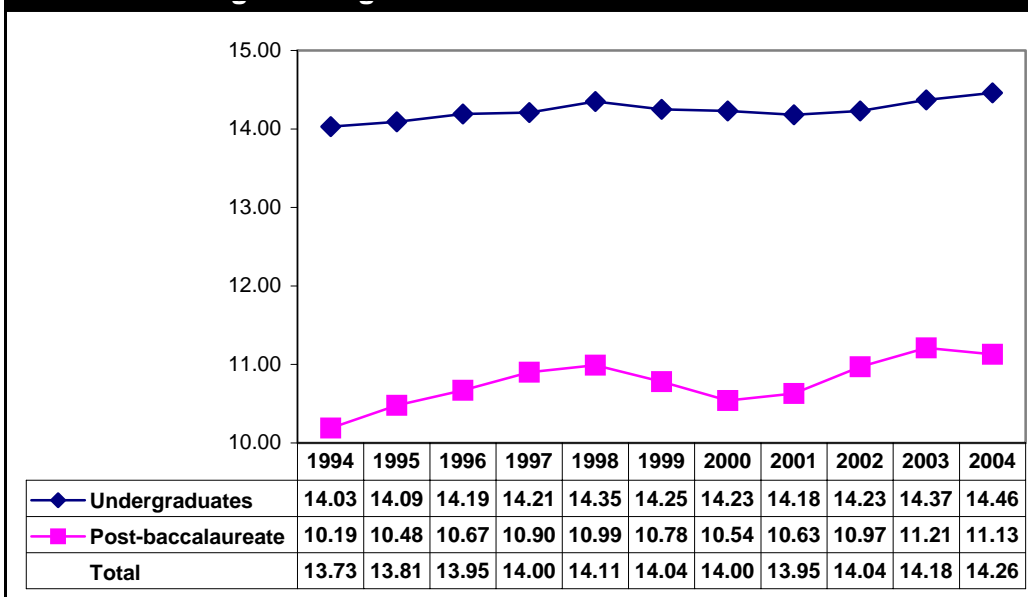
a new record for average unit load. Both post-baccalaureate and undergraduate unit loads increased.

Undergraduate students in the College of Business displayed the highest average unit load at 14.70; followed by the College of Architecture and Environmental Design (14.63); the College of Agriculture (14.57); the College of Engineering (14.47); the

College of Liberal Arts (14.32); and the College of Science and Mathematics (14.10).

There was again a slight increase in the proportion of undergraduate students enrolled full-time (12 or more units) in Winter 2004 (94.8%) compared to Winter 2003 (94.1%). Following the typical enrollment pattern, this is lower than Fall 2003 (95.2%).

Average Undergraduate and Post-baccalaureate Units



UNIVERSITY STUDENT DIVERSITY

Of the total enrolled students at Cal Poly in Winter 2004, 44.4% are female and 55.6% are male. Among the colleges, the female/male ratio varies with more females than males in the University Center for Teacher Education (76.8% female), the College of Liberal Arts (70.9% female), the College of Agriculture (57.3% female), and the College of Science and Mathematics (55.4% female). Males outnumber females in the College of Engineering (84.5% male), College of Architecture and Environmental Design (65.1% male), and the College of Business (57.2% male).

Winter 2004 enrollment by ethnic origin shows that 63.0% of the undergraduates identified themselves as white and 25.6% as non-white, 0.8% are designated as international students, and 10.6% of undergraduates chose not to respond to the ethnic origin question (information on student ethnic origin is self-reported).

Among post-baccalaureate students enrolled for Winter 2004, 58.7% are white, 23.3% are non-white, 1.9% are international students, and 16.1% did not respond.

NEW STUDENTS

Cal Poly processed 909 undergraduate applications for Winter 2004. Of those, 196 students were selected, and census numbers indicate 3 new freshmen, 30 lower division transfers, 107 upper division transfers, and 17 "other"* undergraduate students actually enrolled. 16,359 returning and continuing undergraduates and also enrolled.

At the post-baccalaureate level, Cal Poly processed 271 applications and selected 151 students. Registered for Winter 2004 courses were 118 new post-baccalaureate students, 9 "other"* post-baccalaureates, and 897 returning and continuing students.

* "Others" include transitory/visiting students, non-degree-seeking faculty and staff, and students applying for the Cuesta College Ag Tech program.