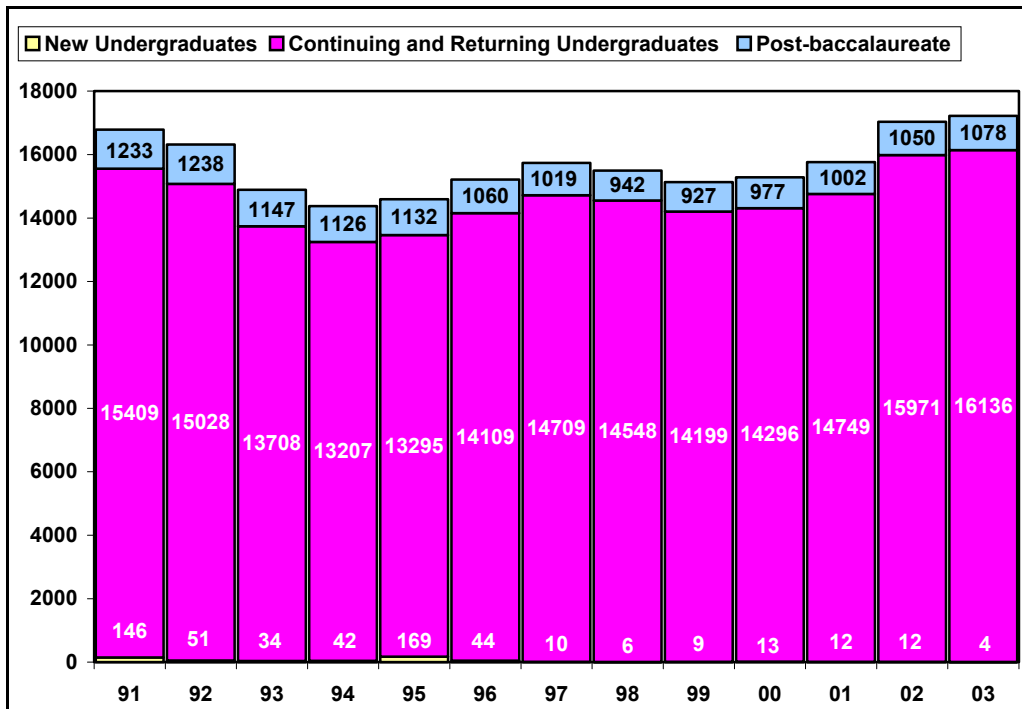


## UNIVERSITY HEADCOUNT ENROLLMENT



The total headcount enrollment for Spring 2003 is 17,218. This is an increase of 185 students over Spring 2002, and higher than the original enrollment target set for set last March (16,663) and the revised projection after Fall census (17,197). Spring 2003 FTES is 15,940, also above target (15,300) and the revised projection (15,794).

The final College Year FTES enrollment is 17,598, 4.1% above the level assigned to the campus by the Chancellor's Office. The overage was due in part to higher than projected unit loads throughout the year.

More target-related information can be found at [www.ipa.calpoly.edu/targets.html](http://www.ipa.calpoly.edu/targets.html)

## HEADCOUNT ENROLLMENT BY COLLEGE

While Cal Poly exceeded the total enrollment target set for Spring 2003, the enrollment increases were not shared equally among the six colleges. The largest increase over Spring 2002 occurred in the College of Architecture and Environmental Design (up 6.1%), followed by the College of Engineering (up 3.3%), University Center for Teacher Education (up 2.0%), and the College of Agriculture (up 0.6%).

Enrollment in the College of Science and Mathematics was identical to Spring 2002, while the College of Liberal Arts and the College of Business each showed a decrease in headcount (down 2.6% and 0.4%, respectively).

Post-baccalaureate headcount enrollments exceeded target in all quarters of AY 2002-03.

### OFFICIAL College and University Total Headcount Enrollment (Spring Census, 5/9/03)

College	Undergraduate	Post-baccalaureate	Headcount Total
Agriculture	3,361	132	3,493
Arch & Environmental Design	1,686	62	1,748
Business	2,355	105	2,460
Engineering	4,157	237	4,394
Liberal Arts	2,876	76	2,952
Science & Mathematics	1,613	78	1,691
UCTE	n/a	360	360
Other	92	28	120
<b>Total University Enrollment</b>	<b>16,140</b>	<b>1,078</b>	<b>17,218</b>

**FULL-TIME EQUIVALENT STUDENTS, AVERAGE UNITS AND FULL-TIME STATUS**

Full-Time Equivalent Students (FTES) is a theoretical normal workload equal to 15 units per student per term. It assumes that a student will complete a 180 quarter unit baccalaureate program in 12 quarters or 4 years at 15 units per term.

FTES was targeted for Spring 2003 at 15,300. Actual FTES is 15,940, 4.2% above the original target set in March 2002 and 0.9% above the revised projection after Fall 2002 census (15,794).

The internal CY FTES target for 2002-03 was set at 0.2% above the assigned CY FTES to avoid a shortfall in CY enrollment. Summer 2002

enrollment exceeded target by over 600 students and almost 100 FTES and started a pattern of higher than projected enrollments that continued throughout the academic year.

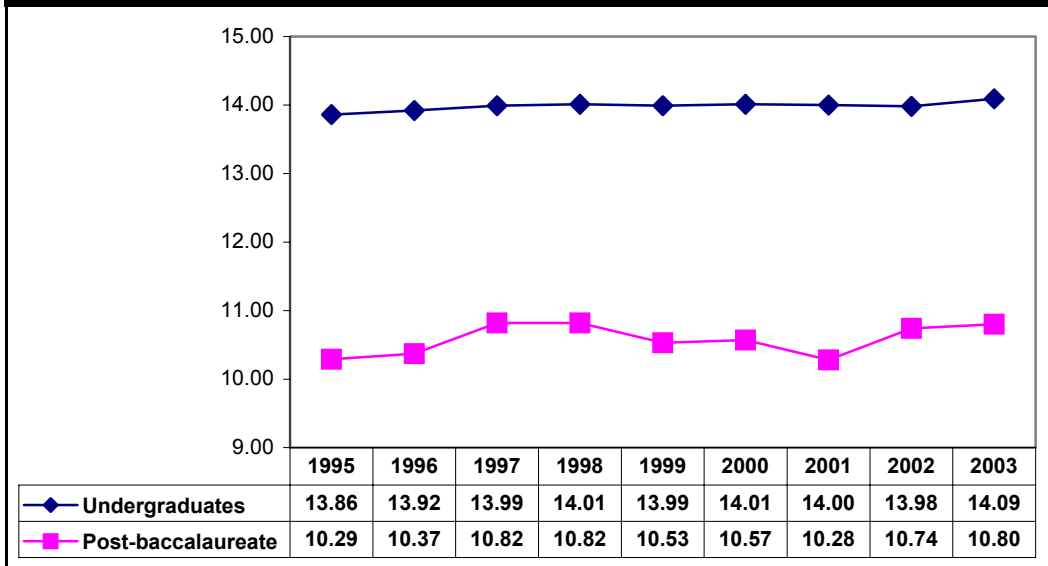
Spring 2003 saw another increase in the number of average units per student, up from 13.78 in Spring 2001 to 13.89 per student (total enrollment). Both undergraduate and post-baccalaureate average unit loads increased over Spring 2002.

Undergraduate students in the College of Architecture and Environmental Design displayed the highest average unit load

at 14.36, followed by the College of Agriculture (14.34); the College of Business (14.08); the College of Engineering (14.04); the College of Liberal Arts (13.95); and the College of Science and Mathematics (13.90).

There was a slight increase in the proportion of undergraduate students enrolled full-time (12 or more units) in Spring 2003 (92.5%) compared to Spring 2002 (91.8%). However, following the typical enrollment pattern, this is lower than both Winter 2003 (94.1%) and Fall 2002 (95.0%).

**Average Undergraduate and Post-baccalaureate Units**



**UNIVERSITY STUDENT DIVERSITY**

Of the total enrolled students at Cal Poly in Spring 2003, 44.8% are female and 55.2% are male. Among the colleges, the female/male ratio varies with more females than males in the University Center for Teacher Education (76.1% female), the College of Liberal Arts (71.0% female), the College of Science and Mathematics (55.5% female), and the College of Agriculture (57.5% female). Males outnumber females in the College of Engineering (83.8% male), College of Architecture and Environmental Design (66.1% male), and the College of Business (58.0% male).

Cal Poly Spring 2003 enrollment by ethnic origin shows that 61.2% of the undergraduates identified themselves as white and 25.5% as non-white, 1.0% are designated as international students, and 12.3% of undergraduates chose not to respond to the ethnic origin question (information on student ethnic origin is self-reported).

Among post-baccalaureate students enrolled for Spring 2003, 62.1% are white, 22.3% are non-white, 2.0% are international students and 13.6% did not respond.

**NEW STUDENTS**

Cal Poly processed 39 undergraduate applications for Spring 2003. Six students were selected, and census numbers indicate 4 new undergraduate students actually enrolled for Spring 2003 courses. 16,124 returning and continuing undergraduates and 12 other new undergraduate students also enrolled.

At the post-baccalaureate level, Cal Poly processed 167 applications and selected 110 students. 85 new post-baccalaureate students, 989 returning and continuing students, and 4 other new post-baccalaureate students registered for Spring 2003 courses.