

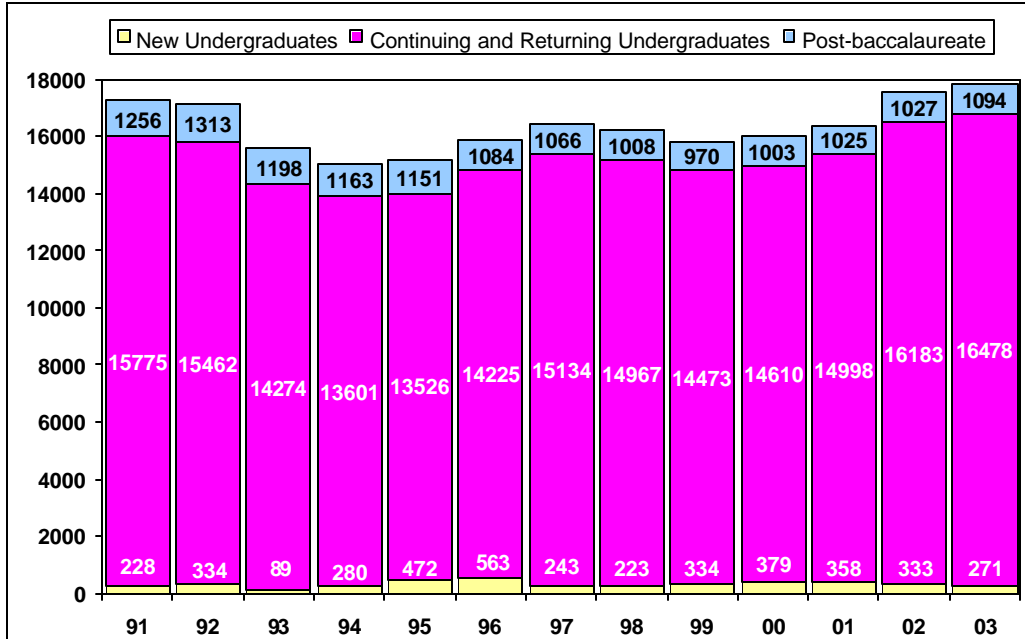
Winter 2003 Census Enrollment

INFO BRIEF

Cal Poly San Luis Obispo

February 14, 2003

UNIVERSITY HEADCOUNT ENROLLMENT



The total headcount enrollment for Winter 2003 is 17,843. This is an increase of 300 students over Winter 2002 and higher than the original enrollment target set last March (17,353), but just under the revised projection set after Fall census (17,909). Winter 2003 FTES is 16,868, above both the original target (16,205) and the revised projection (16,742).

College Year enrollment is now projected to reach about 17,530 CY FTES, approximately 3.7% above the level set by the California State University Chancellor's Office for Cal Poly this year.

HEADCOUNT ENROLLMENT BY COLLEGE

While we exceeded the total enrollment target set for Winter 2003, not every college showed an increase over last year's enrollment. The largest increase over Winter 2002 occurred in the College of Architecture and Environmental Design (up 7.3%), followed by the College of Engineering (up 3.4%),

the College of Agriculture and the College of Business (both up 0.9%), and the College of Science and Mathematics (up 0.4%). Enrollment in the College of Liberal Arts was down 0.8%, and the University Center for Teacher Education showed a decrease of 14 students (3.8%) from last Winter.

OFFICIAL College and University Total Headcount Enrollment (Winter Census, 2/14/03)

College	Undergraduate	Post-baccalaureate	Headcount Total
Agriculture	3,508	129	3,637
Arch & Environmental Design	1,718	69	1,787
Business	2,428	107	2,535
Engineering	4,338	238	4,576
Liberal Arts	2,993	82	3,075
Science & Mathematics	1,662	84	1,746
UCTE	n/a	356	356
Other	102	29	131
Total University Enrollment	16,749	1,094	17,843

FULL-TIME EQUIVALENT STUDENTS, AVERAGE UNITS AND FULL-TIME STATUS

Full-Time Equivalent Students (FTES) is a theoretical normal workload equal to 15 units per student per term. It assumes that a student will complete a 180 quarter unit baccalaureate program in 12 quarters or 4 years at 15 units per term.

FTES was targeted for Winter 2003 at 16,205. Actual FTES is 16,868, about 4.1% over target. Winter 2003 FTES was 2.7% higher than Winter 2002.

Winter 2003 saw an increase in the number of average units per student, up from 14.04 in Winter 2002 to 14.18 per student (total enrollment).

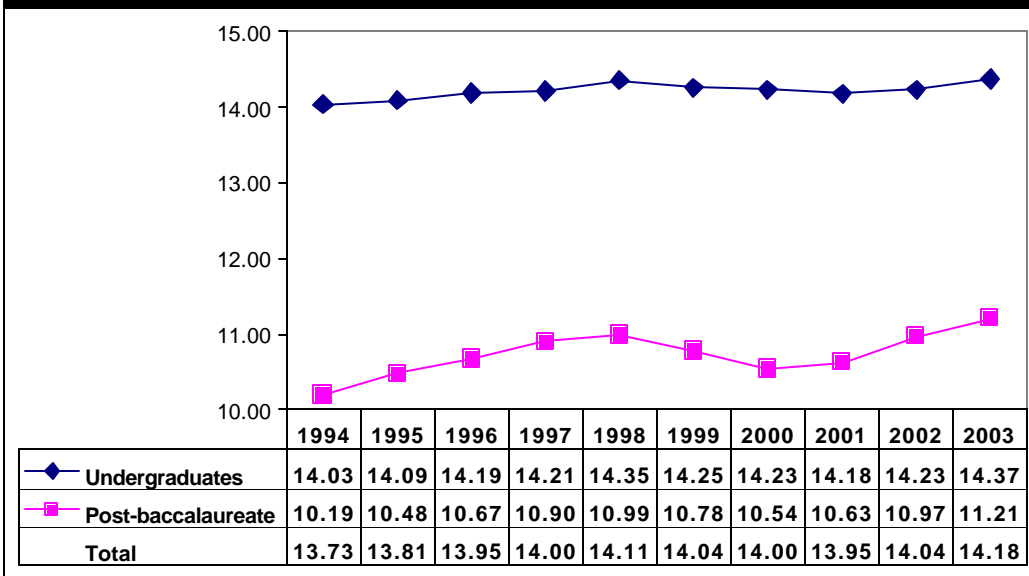
Looking at trends since 1990, this Winter has set a new record for average unit load. Both post-baccalaureate and undergraduate unit loads increased.

Undergraduate students in the College of Architecture and Environmental Design displayed the highest average unit load at 14.53; followed by the College of Agriculture (14.52); the College of Business (14.49); the College of Engineering

(14.39); the College of Liberal Arts (14.32); and the College of Science and Mathematics (13.97).

There was a slight increase in the proportion of undergraduate students enrolled full-time (12 or more units) in Winter 2003 (94.1%) compared to Winter 2002 (93.4%). Following the typical enrollment pattern, this is lower than Fall 2002 (95.0%).

Average Undergraduate and Post-baccalaureate Units



UNIVERSITY STUDENT DIVERSITY

Of the total enrolled students at Cal Poly in Winter 2003, 45.0% are female and 55.0% are male. Among the colleges, the female/male ratio varies with more females than males in the University Center for Teacher Education (75.3% female), the College of Liberal Arts (71.8% female), the College of Agriculture (57.2% female), and the College of Science and Mathematics (55.8% female). Males outnumber females in the College of Engineering (83.7% male), College of Architecture and Environmental Design (65.6% male), and the College of Business (58.2% male).

Winter 2003 enrollment by ethnic origin shows that 61.2% of the undergraduates identified themselves as white and 25.4% as non-white, 1.0% are designated as international students, and 12.4% of undergraduates chose not to respond to the ethnic origin question (information on student ethnic origin is self-reported).

Among post-baccalaureate students enrolled for Winter 2003, 62.3% are white, 21.8% are non-white, 2.3% are international students and 13.6% did not respond.

NEW STUDENTS

Cal Poly processed 933 undergraduate applications for Winter 2003. Of those, 346 students were selected, and census numbers indicate 1 new freshman, 42 lower division transfers, 213 upper division transfers, and 15 "other"* undergraduate students actually enrolled. 16,478 returning and continuing undergraduates and also enrolled.

At the post-baccalaureate level, Cal Poly processed 304 applications and selected 173 students. 136 new post-baccalaureate students, 9 "other"* post-baccalaureates, and 949 returning and continuing students registered for Winter 2003 courses.

* "Others" include transitory/visiting students, non-degree-seeking faculty and staff, and students applying for the Cuesta College Ag Tech program.