

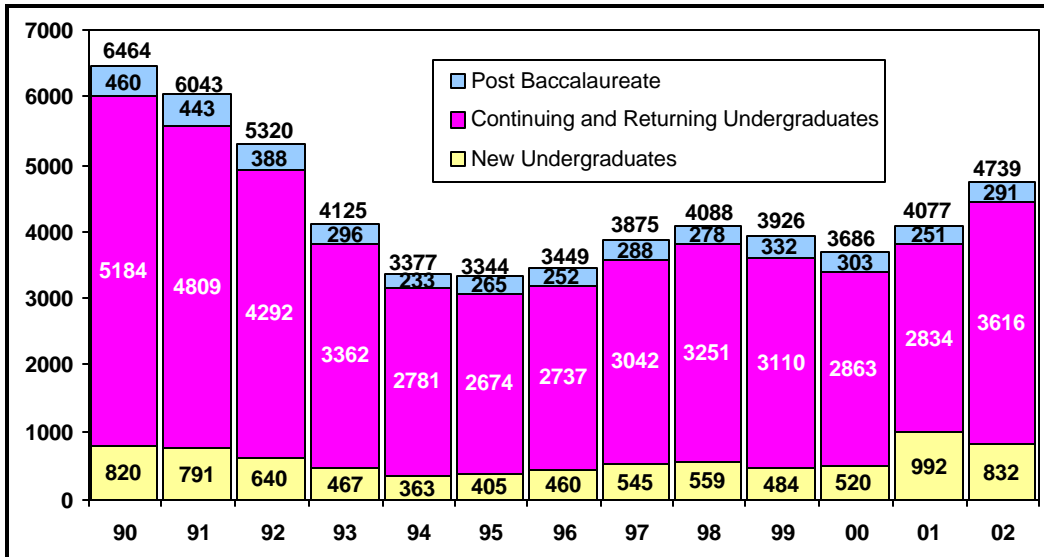
# Summer 2002 Census Enrollment

# INFO BRIEF

Cal Poly San Luis Obispo

July 26, 2002

## UNIVERSITY HEADCOUNT ENROLLMENT



The total headcount enrollment for Summer 2002 is 4,739. This is an increase of 662 students over Summer 2001, and 635 more than the enrollment target set for Summer 2002 (4,104).

More target-related information can be found at [www.calpoly.edu/~inststdy/targets.html](http://www.calpoly.edu/~inststdy/targets.html)

## NEW, CONTINUING, AND RETURNING STUDENTS

Not only was there an overall enrollment increase, but this Summer saw continuing and returning students enrolling at a higher rate than last year. Summer 2002 census enrollment numbers show 525 new first-time freshmen, 307 new undergraduate transfers, and 14 "other" new non-matriculated students.

In Summer 2001, new students who were originally part of Fall 2001 target, enrolled "early" through the Jump-Start and Summer Institute programs, or through an Admission's Office approved term change. These students, along with the regular new Summer students,

boosted enrollment above the Summer 2001 headcount target. This Summer, 563 new Summer target undergraduate students enrolled (39 over target), 283 new Fall target students enrolled "early," and undergraduate continuing student enrollment was over projection by 300 students. This resulted in undergraduate enrollment exceeding target by 640 students.

Post-baccalaureate enrollment was just under target at 291 (five students under the target of 296). This was much closer to target than last Summer when post-baccalaureate enrollment was under target by 51.

## OFFICIAL College and University Total Headcount Enrollment (Summer Census, 7/26/02)

College	Undergraduate	Post-baccalaureate	Headcount Total	% Change from Summer 2001
Agriculture	925	20	945	32.9%
Arch & Environmental Design	303	3	306	-7.6%
Business	793	26	819	14.5%
Engineering	1,107	45	1,152	14.6%
Liberal Arts	840	31	871	14.8%
Science & Mathematics	447	15	462	17.3%
UCTE	n/a	145	145	16.0%
Other	33	6	39	5.4%
<b>Total University Enrollment</b>	<b>4,448</b>	<b>291</b>	<b>4,739</b>	<b>16.2%</b>

**FULL-TIME EQUIVALENT STUDENTS, AVERAGE UNITS AND FULL-TIME STATUS**

Full-Time Equivalent Students (FTES) is a theoretical normal workload equal to 15 units per student per term. It assumes that a student will complete a 180 quarter unit baccalaureate program in 12 quarters or 4 years at 15 units per term.

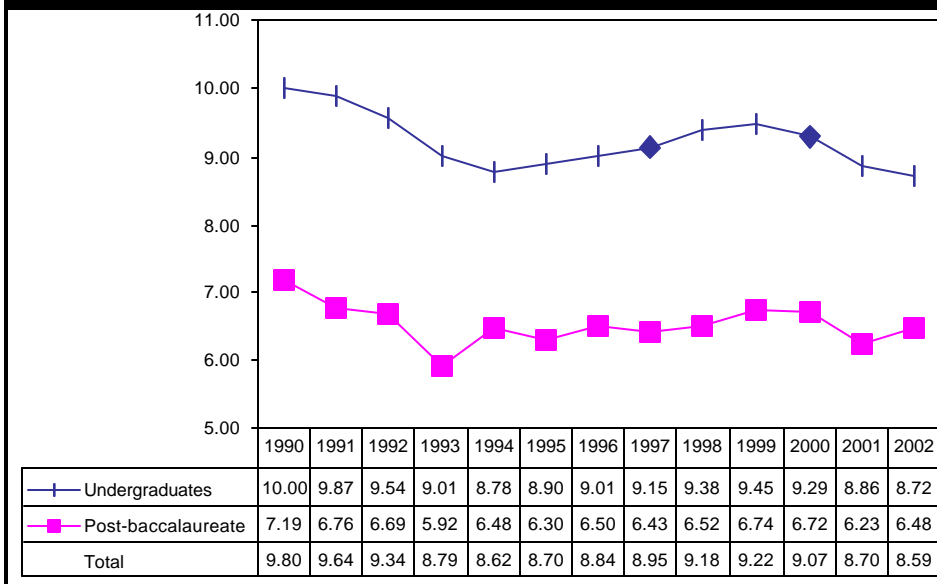
FTES for Summer 2002 was 2,713, 11.4% above Summer target (2,436) and 14.8% more than Summer 2001.

Average course loads were below target at 8.59. As was the case last Summer, students seemed to be taking advantage of the change (for Summer only) in the unit load for partial fees to eight units or

fewer. The percentage of undergraduate students enrolled in eight or more units dropped from almost 40% in Summer 2001 to 36% in Summer 2002. The design of Jump-Start and Summer Institute also encouraged students to take eight or fewer units. (Students in these programs enroll in two classes.)

Undergraduate students in the College of Business displayed the highest average unit load at 9.18, followed by the College of Engineering (8.88); the College of

**Average Summer Quarter Undergraduate and Post-baccalaureate Units**



Liberal Arts (8.76); the College of Agriculture (8.58); the College of Architecture and Environmental Design (8.43); and the College of Science and Mathematics (8.18).

The proportion of undergraduates enrolled full-time (12 or more units) in Summer 2002, decreased to 27.5% from 28.9% in Summer 2001. Full-time post-baccalaureate students (9 or more units) were up at 18.6% when compared to Summer 2001 (16.7%). Post-baccalaureate unit load showed a slight increase over last year.

**UNIVERSITY STUDENT DIVERSITY**

Of the total enrolled students at Cal Poly in Summer 2002, 47.9% are female and 52.1% are male. Among the colleges, the female/male ratio varies with more females than males in the University Center for Teacher Education (81.4% female), the College of Liberal Arts (72.3% female), the College of Agriculture (61.0% female), and the College of Science and Mathematics (53.9% female). Males outnumber females in the College of Engineering (83.2% male), the College of Architecture and Environmental Design (62.4% male), and the College of Business (55.6% male).

Summer 2002 enrollment by ethnic origin shows that 56.0% of the undergraduates identified themselves as white and 29.3% as non-white. International students account for 1.3% of enrolled undergraduates, and 13.4% of undergraduates chose not to respond to the ethnic origin question (information on student ethnic origin is

self-reported). Undergraduate students enrolled for Summer historically tend to be more ethnically diverse than the other terms. The proportion of females also tends to be higher in the Summer.

Among post-baccalaureate students enrolled for Summer 2002, 64.3% are white, 21.6% are non-white, 1.7% are international students and 12.4% did not respond.

**FTES - SUMMER AND COLLEGE YEAR**

Fall admissions and enrollment do not depend on Summer enrollment levels. Consequently, Institutional Planning and Analysis does not adjust expectations regarding Fall enrollment based on Summer enrollment. For additional information on 2002-03 targets and an overview/timeline for enrollment monitoring and planning, see the IP&A website at [www.calpoly.edu/~inststdy/targets.html](http://www.calpoly.edu/~inststdy/targets.html)