

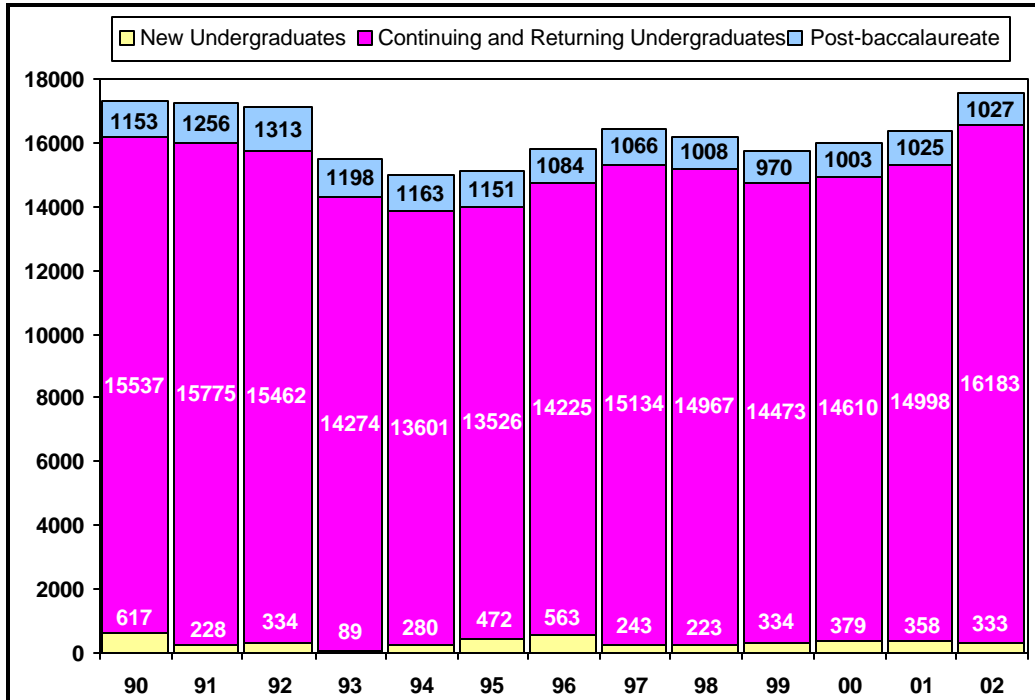
Winter 2002 Census Enrollment

INFO BRIEF

Cal Poly San Luis Obispo

February 15, 2002

UNIVERSITY HEADCOUNT ENROLLMENT



The total headcount enrollment for Winter 2002 is 17,543. This is an increase of 1,162 students over Winter 2001, and higher than the original enrollment target set for set last February (17,132) and the revised projection after Fall census (17,542). Winter 2001 FTES is 16,424, also above target (15,986) and the revised projection (16,345).

College Year enrollment is projected to reach about 17,020 CY FTES, approximately 5% above the level set by the California State University Chancellor's Office for Cal Poly this year. The Fall internal campus target was originally set 2.2% above the level set by the CSU in order to avoid a shortfall in CY enrollment.

HEADCOUNT ENROLLMENT BY COLLEGE

While we exceeded the total enrollment target set for Winter 2002, the enrollment increases were not shared equally among the six colleges. The largest increase over Winter 2001 was shown in the College of Liberal Arts (up 9.2%), followed closely by the College of Engineering (up 9.1%), the College of

Business (up 8.8%), the College of Science and Mathematics (up 8.6%), the College of Architecture and Environmental Design (up 6.3%), and the College of Agriculture (up 3.8%). Enrollment in the University Center for Teacher Education was down 32 students from last Winter, a decrease of 8.0%.

OFFICIAL College and University Total Headcount Enrollment (Winter Census, 2/15/02)

College	Undergraduate	Post-baccalaureate	Headcount Total
Agriculture	3,501	105	3,606
Arch & Environmental Design	1,609	57	1,666
Business	2,398	115	2,510
Engineering	4,249	175	4,424
Liberal Arts	3,012	88	3,100
Science & Mathematics	1,655	84	1,739
UCTE	n/a	370	370
Other	95	33	128
Total University Enrollment	16,516	1,027	17,543

FULL-TIME EQUIVALENT STUDENTS, AVERAGE UNITS AND FULL-TIME STATUS

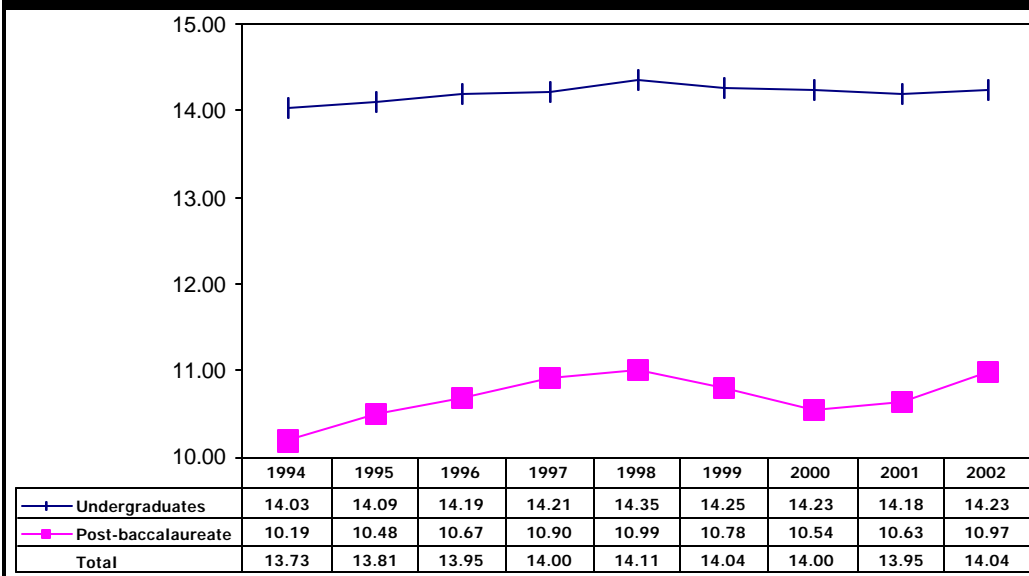
Full-Time Equivalent Students (FTES) is a theoretical normal workload equal to 15 units per student per term. It assumes that a student will complete a 180 quarter unit baccalaureate program in 12 quarters or 4 years at 15 units per term.

FTES was targeted for Winter 2002 at 15,986. Actual FTES is 16,424, 2.7% above target. Winter 2002 FTES was 7.8% higher than Winter 2001.

Winter 2002 saw an increase in the number of average units per student, up from 13.95 in Winter 2001 to 14.04 per student (total enrollment).

This returns the average unit load to the Winter 1999 level. Both post-baccalaureate and undergraduate unit loads increased. Undergraduate students in the College of Architecture and Environmental Design displayed the highest average unit load at 14.49, followed by the College of Agriculture (14.44); the College of Business (14.32); the College of Liberal Arts (14.22); the College of Engineering (14.20); and the College of Science and

Average Undergraduate and Post-baccalaureate Units



Mathematics (13.79).

There was a slight increase in the proportion of undergraduate students enrolled full-time (12 or more units) in Winter 2002 (93.4%) compared to Winter 2001 (92.3%). However, following the typical enrollment pattern, this is lower than Fall 2001 (94.3%).

UNIVERSITY STUDENT DIVERSITY

Of the total enrolled students at Cal Poly in Winter 2002, 45.3% are female and 54.7% are male. Among the colleges, the female/male ratio varies with more females than males in the University Center for Teacher Education (76.5% female), the College of Liberal Arts (71.1% female), the College of Science and Mathematics (56.6% female), and the College of Agriculture (56.4% female). Males outnumber females in the College of Engineering (83.7% male), College of Architecture and Environmental Design (65.4% male), and the College of Business (57.3% male).

Cal Poly Winter 2002 enrollment by ethnic origin shows that 61.1% of the undergraduates identified themselves as white and 25.9% as non-white, 1.0% are designated as international students, and 12.0% of undergraduates chose not to respond to the ethnic origin question (information on student ethnic origin is self-reported).

Among post-baccalaureate students enrolled for Winter 2002, 61.3% are white, 20.6% are non-white, 4.0% are international students and 14.1% did not respond.

NEW STUDENTS

Cal Poly processed 1,024 undergraduate applications for Winter 2002. 444 students were selected, and census numbers indicate 63 lower division transfers and 242 upper division transfers actually enrolled. Six new freshmen enrolled for Winter 2002 courses. 16,183 returning and continuing undergraduates and 22 other new undergraduate students

also enrolled. At the post-baccalaureate level, Cal Poly processed 372 applications and selected 262 students. 132 new post-baccalaureate students, 887 returning and continuing students, and 8 other new post-baccalaureate students registered for Winter 2002.