

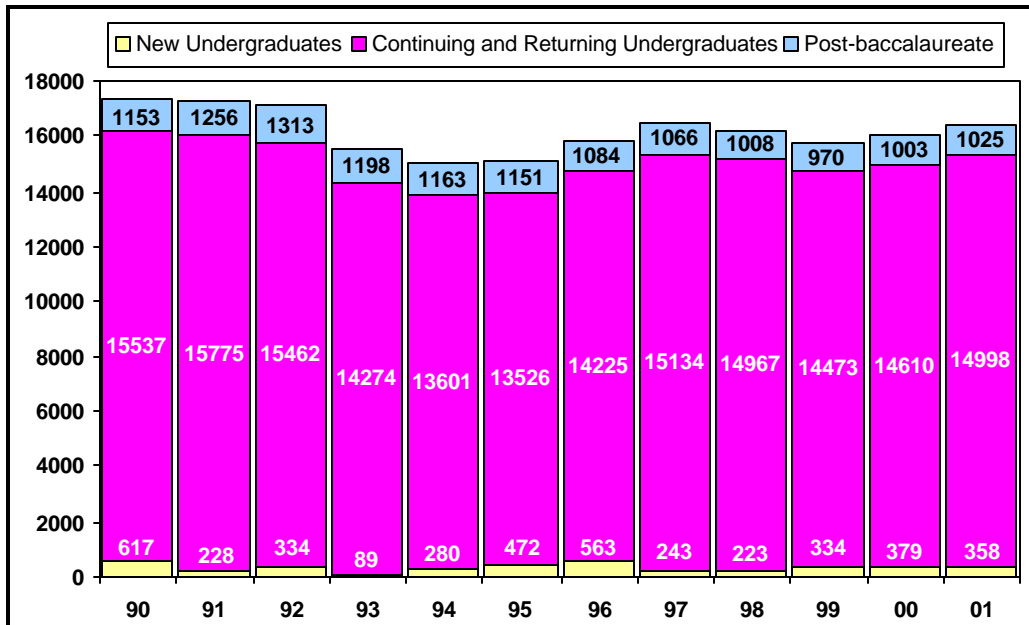
Winter 2001 Census Enrollment

INFO BRIEF

Cal Poly San Luis Obispo

February 16, 2000

UNIVERSITY HEADCOUNT ENROLLMENT



The total headcount enrollment for Winter 2001 is 16,381. This is an increase of 389 students over Winter 2000, but not as high as the enrollment target set for Winter 2001 (16,509). Winter 2001 FTES is 15,240, also slightly short of target (15,441).

With the continued enrollment shortfall, it is projected that the College Year enrollment will be about 1% below the level set by the California State University system Chancellor's Office for Cal Poly this year.

More target-related information can be found at www.calpoly.edu/~inststdy/targets.html

HEADCOUNT ENROLLMENT BY COLLEGE

While we did not reach the target enrollment for the total University, student headcount did increase over Winter 2000. The result varied among colleges, however, with four colleges experiencing enrollment increases and two other colleges decreasing slightly. The largest increase shown was the College of Engineering (up 6.0%), followed by the College of Agriculture (up 4.1%), the College of Architecture and

Environmental Design (up 4.0%), and the College of Liberal Arts (up 0.2%). Enrollment decreases appeared in the College of Science and Mathematics (down 1.5%), and the College of Business (down 1.3%). Enrollment in the University Center for Teacher Education was stable (down only 1 student from last Winter).

OFFICIAL College and University Total Headcount Enrollment (Winter Census, 2/16/01)

College	Undergraduate	Post-baccalaureate	Headcount Total
Agriculture	3,378	96	3,474
Arch & Environmental Design	1,517	50	1,567
Business	2,190	116	2,306
Engineering	3,906	150	4,056
Liberal Arts	2,755	85	2,840
Science & Mathematics	1,506	96	1,602
UCTE	n/a	402	402
Other	104	30	134
Total University Enrollment	15,356	1,025	16,381

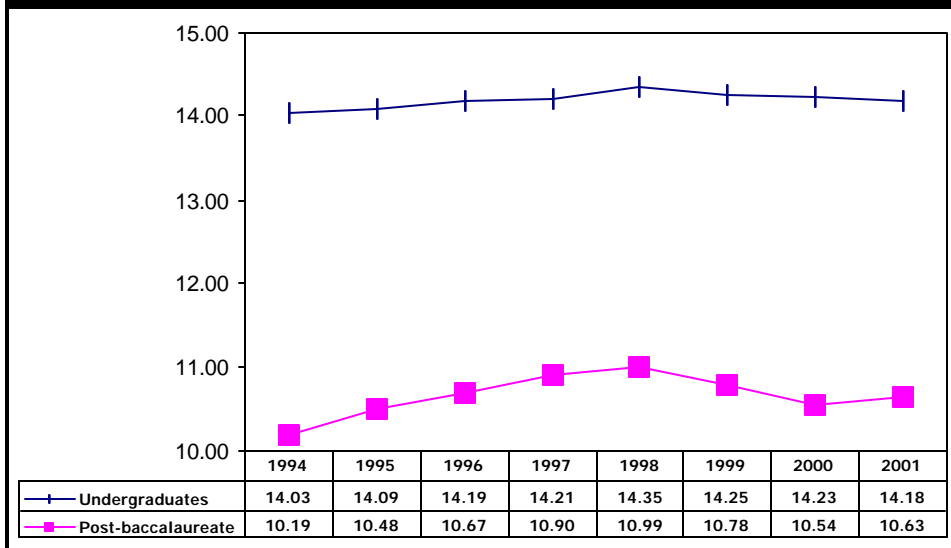
FULL-TIME EQUIVALENT STUDENTS, AVERAGE UNITS AND FULL-TIME STATUS

Full-Time Equivalent Students (FTES) is a theoretical normal workload equal to 15 units per student per term. It assumes that a student will complete a 180 quarter unit baccalaureate program in 12 quarters or 4 years at 15 units per term. FTES was targeted for Winter 2001 at 15,441. Actual FTES is 15,240, 1.3% below target. Winter 2001 FTES was 2.1% more than Winter 2000.

Winter 2001 saw another decrease in the number of average units per student, down from 14.00 in Winter 2000 to 13.95 per student (total enrollment). This drop continues a trend which began in Winter 1999 when the average load fell from 14.11 (Winter 1998) to 14.04. Post-baccalaureate unit load increased while

undergraduate load decreased. Undergraduate students in the College of Architecture and Environmental Design displayed the highest average unit load at 14.41, followed by the College of Agriculture (14.30); the College of Engineering (14.23); the College of Business (14.22); the College of Liberal Arts (14.14); and the College of Science and Mathematics (13.76).

Average Undergraduate and Post-baccalaureate Units



There was a slight increase in the proportion of undergraduate students enrolled full-time (12 or more units) in Winter 2001 (92.3%) compared to Winter 2000 (91.8%). However, following the typical enrollment pattern, this is lower than Fall 2000 (93.3%).

UNIVERSITY STUDENT DIVERSITY

Of the total enrolled students at al Poly in Winter 2001, 45.0% are female and 55.0% are male. Among the colleges, the female/male ratio varies with more females than males in the University Center for Teacher Education (77.4% female), the College of Liberal Arts (69.1% female), the College of Science and Mathematics (56.4% female), and the College of Agriculture (54.6% female). Males outnumber females in the College of Engineering (82.7% male), College of Architecture and Environmental Design (65.3% male), and the College of Business (57.6% male).

Cal Poly Winter 2001 enrollment by ethnic origin shows that 59.8% of the undergraduates identified themselves as white and 26.3% as non-white. 0.9% are designated as international students, and 12.9% of undergraduates chose not to respond to the ethnic origin question (information on student ethnic origin is self-reported). Among post-baccalaureate students enrolled for Winter 2001, 59.5% are white, 20.6% are non-white, 3.5% are international students and 16.4% did not respond.

NEW STUDENTS

Cal Poly processed 1,067 undergraduate applications for Winter 2001. 491 students were selected, and census numbers indicate 70 lower division transfers and 269 upper division transfers actually enrolled. Six new freshmen enrolled for Winter 2001 courses. 14,998 returning and continuing

undergraduates and 13 new undergraduate transitory students also enrolled. At the post-baccalaureate level, Cal Poly processed 297 applications and selected 183 students. 127 new post-baccalaureates and 898 returning and continuing students registered for Winter 2001.

CLASS SCHEDULE UPDATE

The university offered 3,218 sections (not including Independent Study) in Winter 2001. This was an increase of 85 sections over Winter 2000. As the need for technology in the classroom

is increasing, we are identifying additional general purpose classrooms to convert to Smart Rooms during summer quarter.