

InfoBrief ENROLLMENT

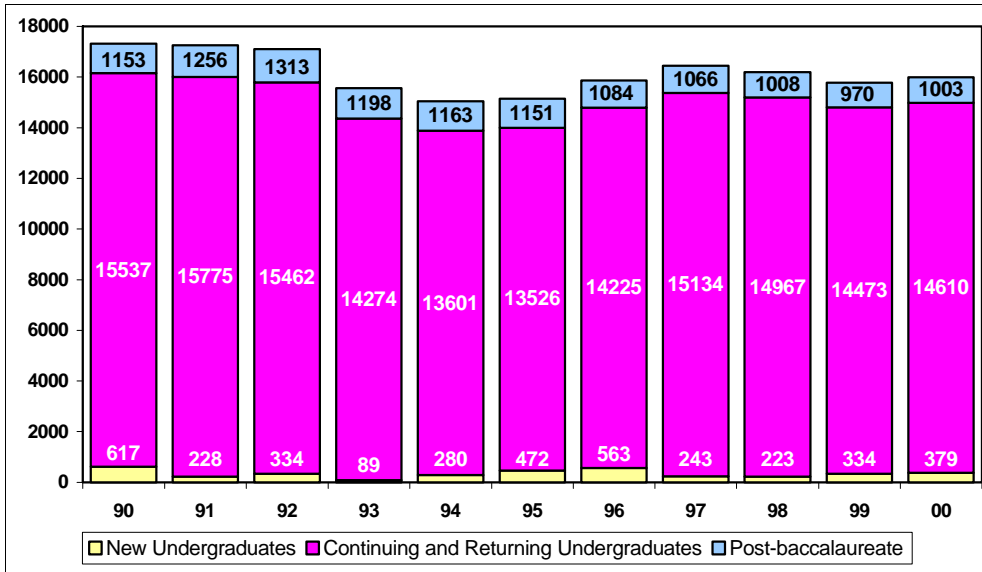
Cal Poly, San Luis Obispo

Institutional Planning and Analysis

Census Data ■ Winter 2000

February 11, 2000

WINTER HEADCOUNT ENROLLMENT — University Total



The total headcount enrollment for Winter 2000 is 15,992. This is an increase of 215 students over Winter 1999, but not as high as the enrollment target set for Winter 2000 (16,323). Winter 2000 FTES is 14,923, also about 2% below the target.

This shortfall was expected following the low enrollment in Fall and Summer 1999. Thus, the College Year enrollment will be below the level set by the California State University system Chancellor's Office for Cal Poly this year.

HEADCOUNT ENROLLMENT BY COLLEGE

The modest Winter 2000 increase in student headcount was not distributed evenly among the colleges. Four colleges and the University Center for Teacher Education experienced enrollment increases; the other two colleges decreased. The largest increase shown was UCTE (up 9.5%), followed by the College of Liberal Arts (with an 8.2% increase), and the College of

Architecture and Environmental Design (up 5.4%). Slight enrollment increases were noted in the College of Business (up 0.5%) and the College of Agriculture (up 0.3%). There was a decrease in enrollment in the College of Science and Mathematics (down 4.5%) and the College of Engineering (down 1.7%).

College and University Total Headcount Enrollment (Official Census, 2/11/00)

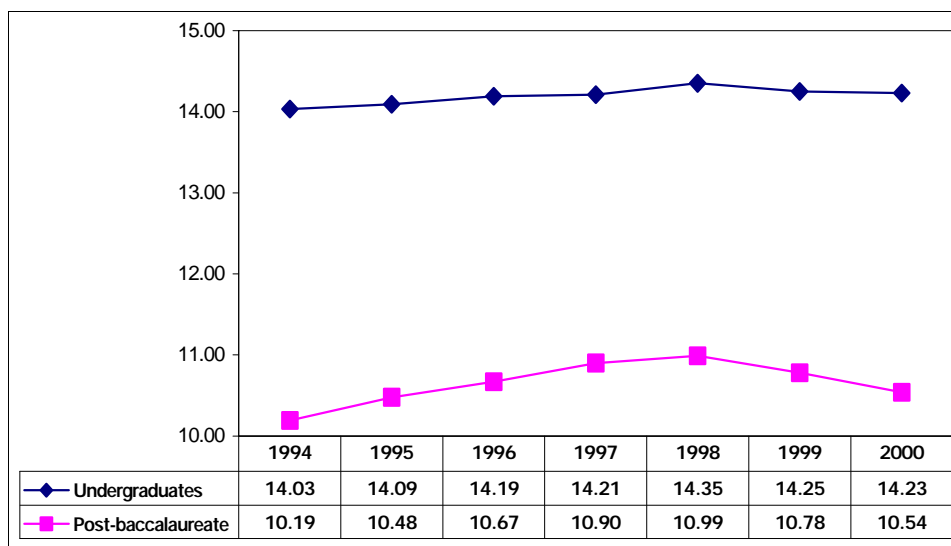
College	Undergraduate	Post Baccalaureate	Headcount Total
Agriculture	3,242	91	3,333
Arch & Environmental Design	1,451	54	1,505
Business	2,223	114	2,337
Engineering	3,682	132	3,814
Liberal Arts	2,747	87	2,834
Science & Mathematics	1,537	89	1,626
UCTE	n/a	403	403
Other	107	33	140
University Total	14,989	1,003	15,992

FULL-TIME EQUIVALENT STUDENTS, AVERAGE UNITS AND FULL-TIME STATUS

Full-Time Equivalent Students (FTES) is a theoretical normal workload equal to 15 units per student per term. It assumes that a student will complete a 186 quarter unit baccalaureate program in 12 quarters or 4 years at 15 units per term. Actual FTES for Winter 2000 is 14,923, about 2% below target (15,283). This is, however, an increase of 1.1% over Winter 1999.

Average units decreased once again in Winter 2000 to 14.00 per student (total undergraduate and post-baccalaureate), a trend which began in Winter 1999 when the average load fell from 14.11 (Winter 1998) to 14.04. Post-baccalaureate unit load dropped dramatically, while average undergraduate units decreased only slightly. Undergraduate students in the College of Architecture and Environmental Design displayed the highest average unit load at 14.46, followed by the College of Engineering (14.41); the College of Agriculture (14.37); the College of Liberal Arts (14.17); the College of Business (14.13); and the College of Science and Mathematics (13.81).

Average Undergraduate and Post Baccalaureate Units



There was a slight decrease in the proportion of undergraduate students enrolled full-time (12 or more units) in Winter 2000, with 91.8% in the full-time category compared with 91.9% in Winter 1999 and 93.1% in Fall 1999.

UNIVERSITY STUDENT DIVERSITY

Cal Poly Winter 2000 enrollment by ethnic origin shows that 58.6% of the undergraduates identified themselves as white, 27.6% non-white and 0.8% are designated as international students. Post-baccalaureate students are 61.7% white, 19.1% non-white and 2.9% international students.

A change was first noticed during analysis of the ethnic origin data for Fall 1999 has continued: the number of enrolled undergraduate students choosing "no response" increased from 7.6% in Winter 1999 to 12.9% in Winter 2000 (information on student ethnic origin is self-reported). There was also an increase in the "no-response" option among post-baccalaureate

students, up from 15.6% in Winter 1999 to 16.3% in Winter 2000. We are continuing to monitor the trend of students declining to select an ethnic origin category as it could have implications for the longitudinal tracking of ethnicity trends at Cal Poly and in some federal reporting requirements.

Of the total enrolled students at Cal Poly 45.1% are female and 54.9% are male. At the undergraduate level, 44.2% of the students are female and 55.8% are male, and at the post-baccalaureate level, 59.0% of enrolled students are female and 41.0% are male.

NEW STUDENTS

Cal Poly processed 1,027 undergraduate applications for Winter 2000. 518 students were selected, and census numbers indicate 95 lower division transfers and 284 upper division transfers (for a total of 379 new undergraduate transfers) actually enrolled. No new freshmen enrolled for Winter 2000 courses. 14,582 returning and continuing undergraduates and

28 new undergraduate transitory students enrolled.

At the post-baccalaureate level, Cal Poly processed 277 applications and selected 174 students. 114 new post-baccalaureates and 889 returning and continuing students registered for Winter 2000.

CLASS SCHEDULE UPDATE

In Winter 2000 the university offered 3,133 sections (not including Independent Study), an increase of 35 sections from Winter 1999. Using the Schedule25 software to assign

general lecture space, lecture room utilization was 88% (based on expected enrollment set by academic departments during the scheduling phases).